



What? Why?

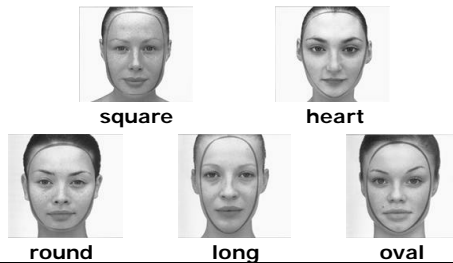
- Colors of liquids, creams, and powders used to transform physical appearances
- High and Low levels of transformation
 - Everyday makeup, party makeup, stage makeup, special FX makeup
- Styles change over time
- To feel new, to feel different, to have fun

Getting Started

- Need certain tools
 - Brushes
 - Sponges
- Skin preparation
 - Cleansing
 - Moisturizing

Face Shapes

- Determine Face Shapes to have most complimentary makeup application



General Application Process

- Determine Face Shape and Skin Tone
 - Skin tones include: black, olive, fair, asian
- Decide on style of make preferred
 - Day vs. Night
 - Color vs. Neutral
- Style of makeup determines which areas to enhance and which areas to shade
 - Shading begins to change face shape or enhance important features
- Each facial element is transformed one by one to change the face entirely or minimally
 - Brows, eyes, cheeks, lips, etc.
 - Usually focus on either eyes or lips



Using cream base and foundation colors, the face is highlighted with lighter shades and shaded with darker shades.



Using foundations, face powders, blushers, eyeshadows, eyeliner and mascara, and lip colors, the face is Transformed in many different ways.



deep-set



heavy brows

- Many different effects can be achieved depending on eye shape, color, size, inset, and brow shape
-Using natural, creamy, matte, and glossy shadows with liners

round



small



asian



- Thin, uneven, shapeless, full, and color unbalanced lips can all be fixed using lip liners and colors
- Drawing lines outside the natural lip line help creates fuller lips
- Drawing lines inside the natural lip line help creates thinner lips



Transformation

Makeup application leads to transformation



Kevin Aucoin

Recreate past actresses from present ones with make up and lighting effects



Isabella Rossellini



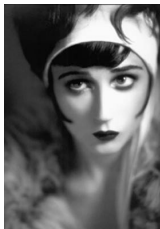
Isabella Rossellini as
Barbara Streisand



Barbara Streisand



Demi Moore



Demi Moore as
Clara Bow



Clara Bow



Courtney Love



Courtney Love as
Jean Harlow



Jean Harlow



Lisa Marie Presley



Lisa Marie Presley
as Marilyn Monroe



Marilyn Monroe



Male transformations

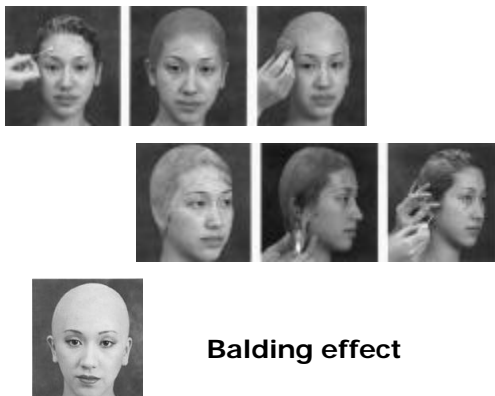


Stage Makeup

- Makeup that strengthens features so they can be seen from far away
- Makeup that creates characters
- Using
 - Cream and Greasepaint, Aqua and dermacolour, Eyeshadow and liner, Pencils and mascaras, Lipsticks and blushers, Brushes and sponges, Dayglo and uv makeup, Remover and setting powder, Hair and moustaches

Aging, Balding, Hair Growth Effects

- Aging
 - Emphasize age lines – nose, mouth
 - Remold face with Patches of shadows not just lines
- Balding
 - caps
- Hair Growth
 - Fake hair applied to head, face and other areas



Balding effect

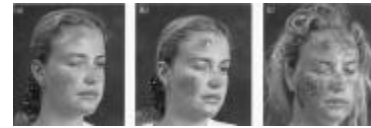


Hair Growth
Effect

Special FX Makeup

- Using blood, prosthetics, latex and nose putty, and spirit gum, special effects makeup is created
- This type of makeup is used for advanced special effects such as those you see in abstract and surreal films and television shows
–Ex: horror films like *Dracula*

Burned Effect



1st Degree

2nd Degree

3rd Degree



Deep Wound Effect

Other Gruesome Effects



FANTASY MAKEUP



Sources

- *Making Faces* Kevin Aucoin
- *Face Forward* Kevin Aucoin
- *The Complete Make-Up Artist* Penny Delamar
- *Classic Make-Up & Beauty* Mary Quant

"The future will belong to those with open minds and open hearts, who can appreciate beauty in all its forms."

-Kevin Aucoin