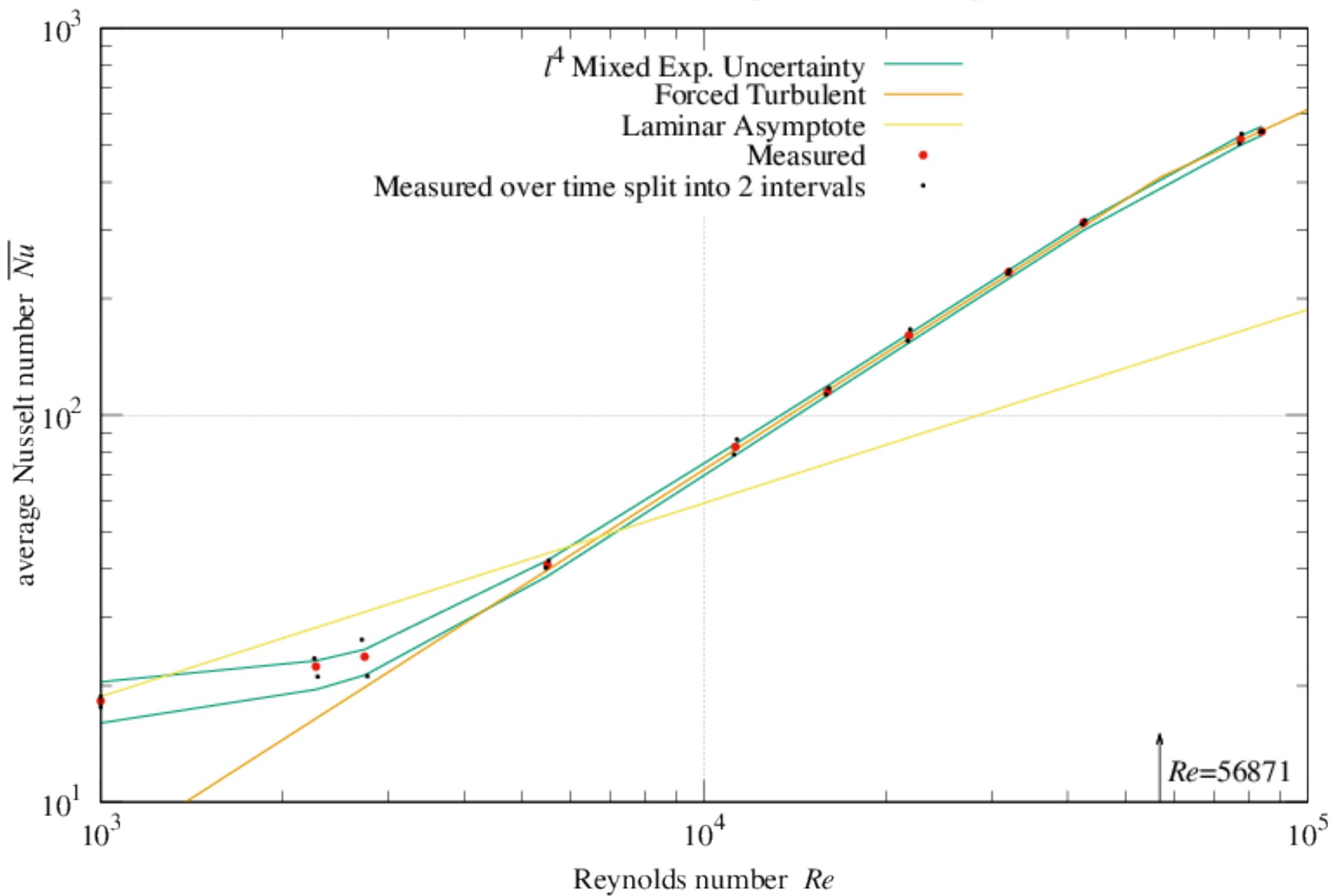
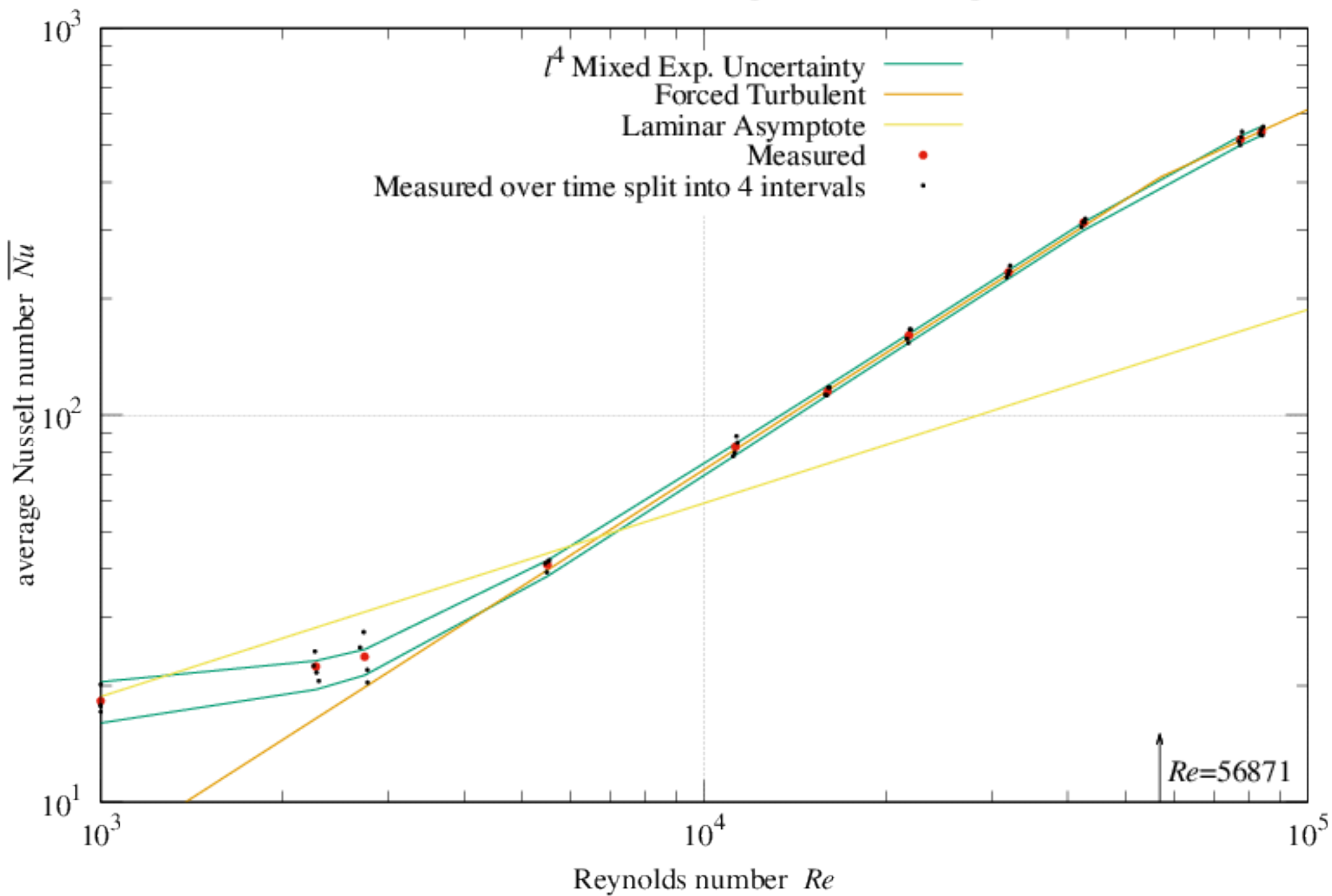


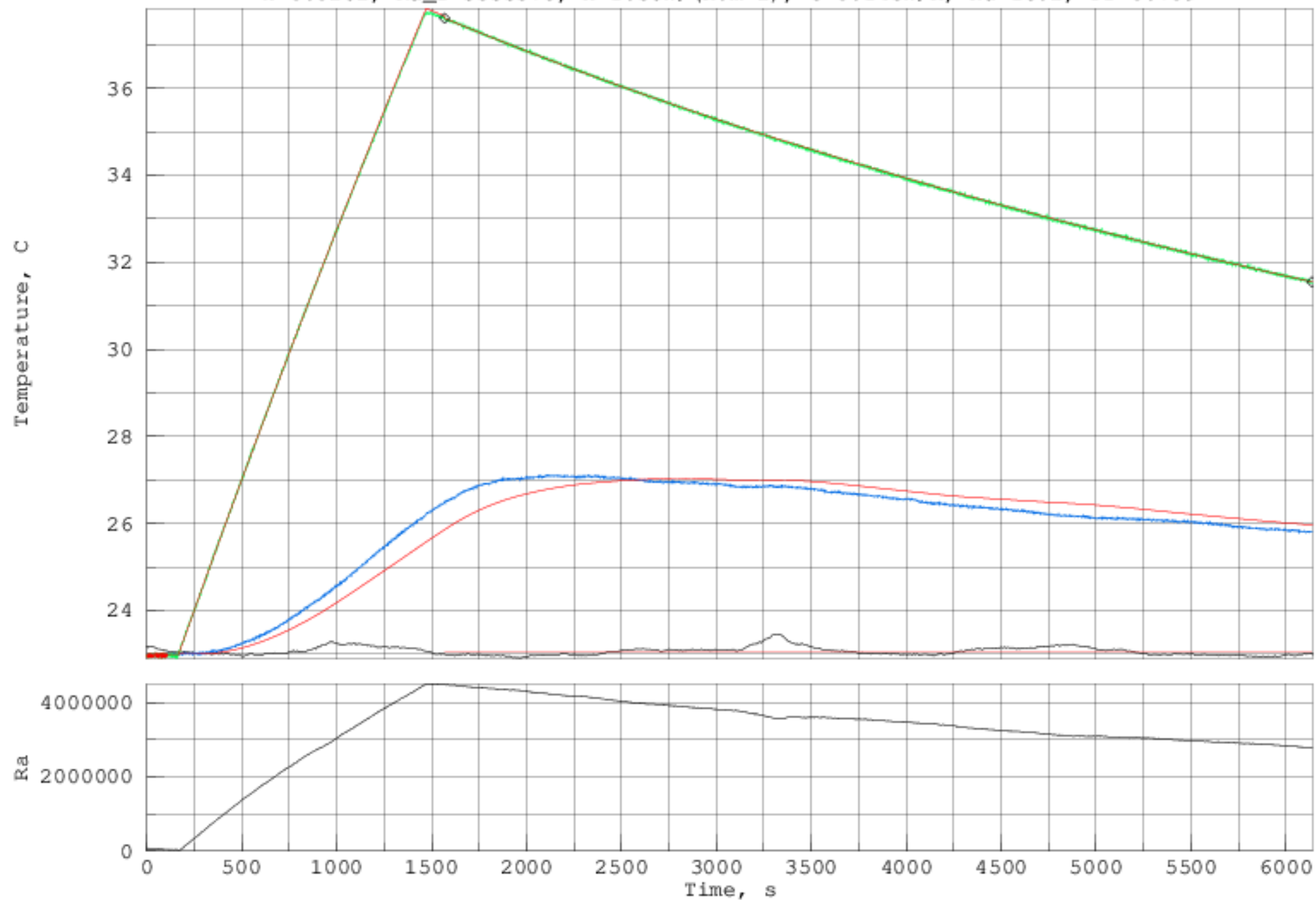
Mixed Convection from Downward Facing Plate, 3mm Roughness, $\Delta T=10K$



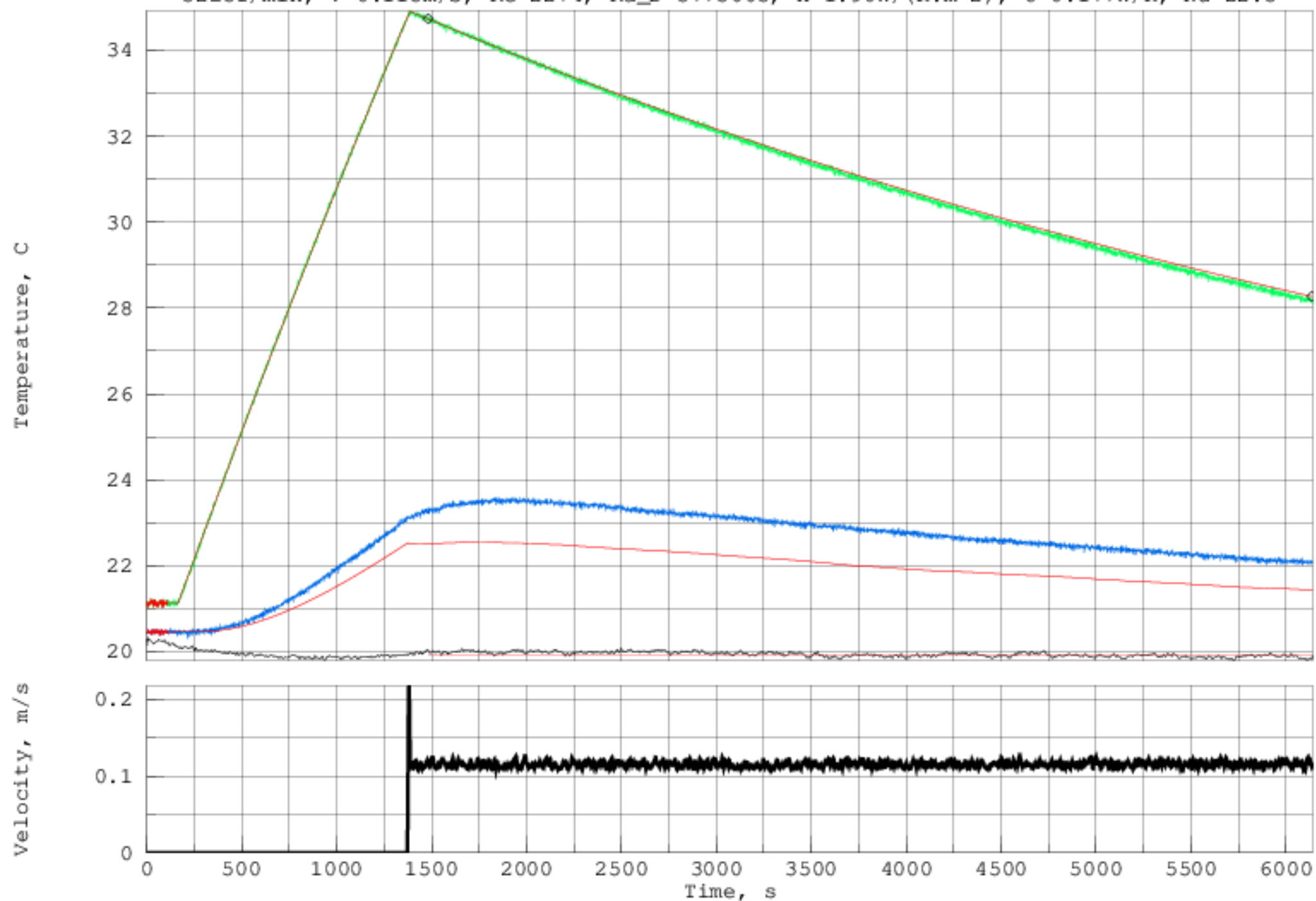
Mixed Convection from Downward Facing Plate, 3mm Roughness, $\Delta T=10K$



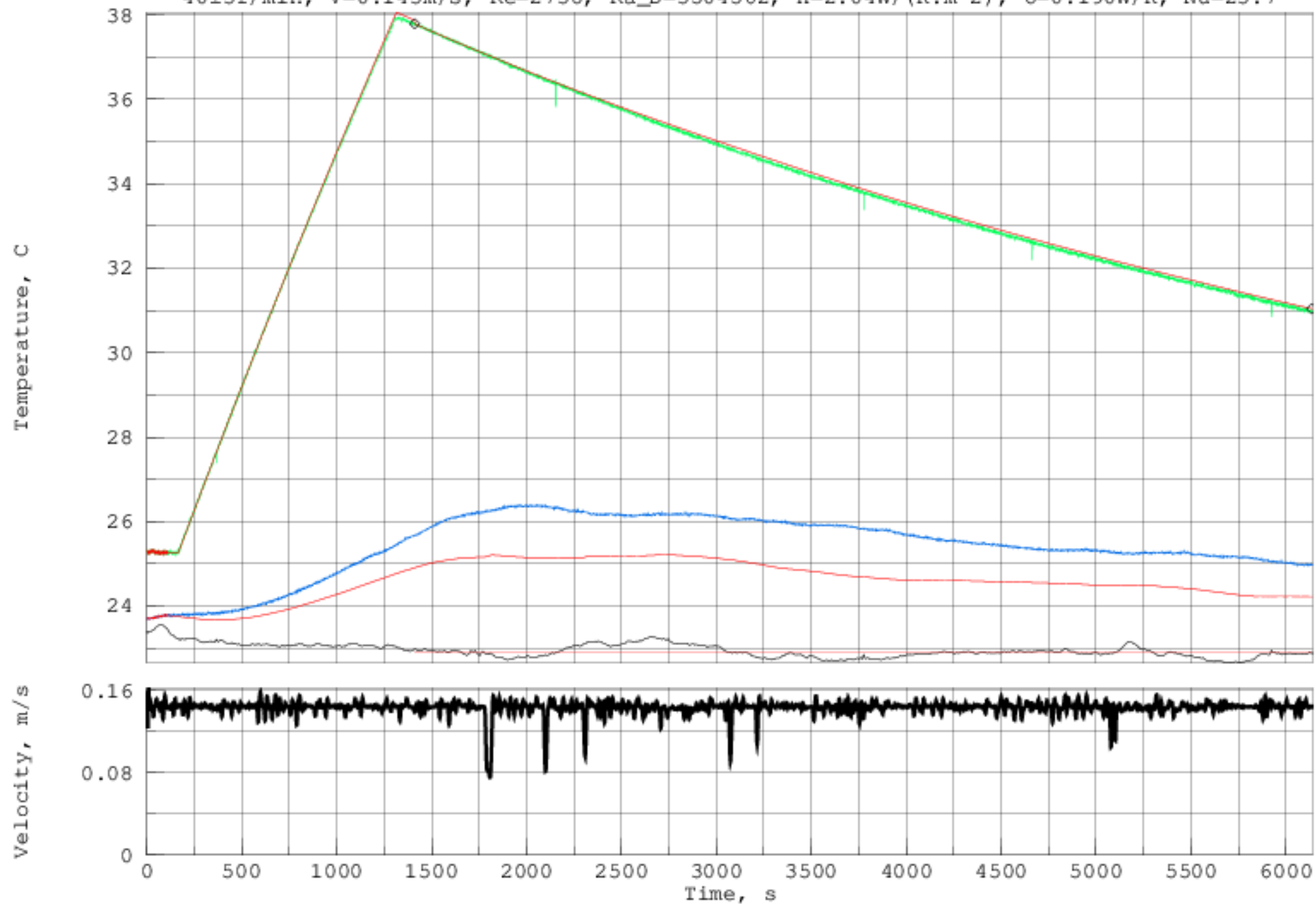
20160806T225914Z - mixed Convection - Roughness=3.00mm; T=23.1+11.2°C; +90.00°
k=0.0262, Ra_D=3533578, h=1.56W/(K.m^2), U=0.145W/K, Nu=18.2, Pr=0.709



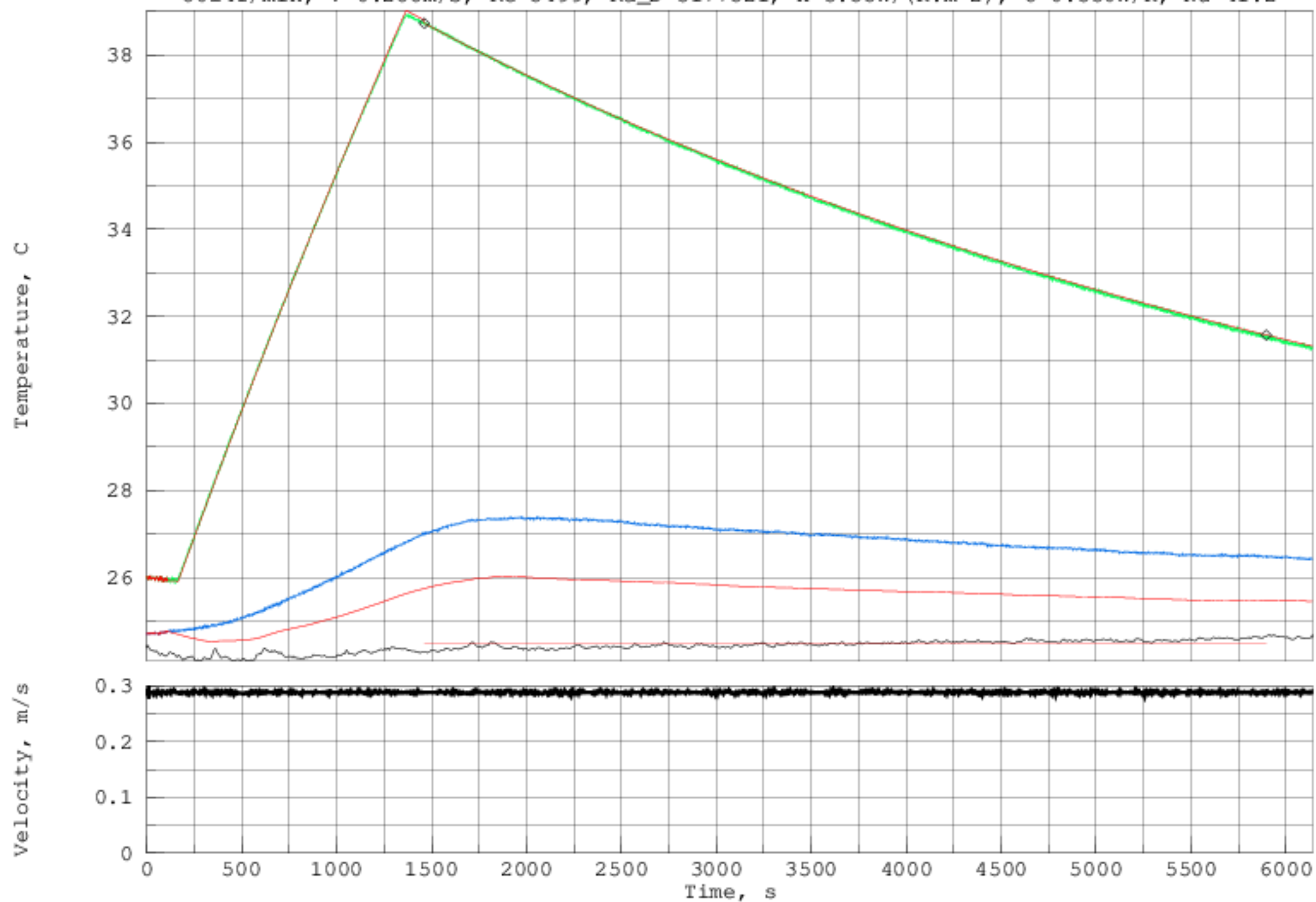
20161009T234431Z - mixed Convection - Roughness=3.00mm; T=19.9+11.2°C; +90.00°
32±5r/min, V=0.115m/s, Re=2274, Ra_D=3773663, h=1.90W/(K.m²), U=0.177W/K, Nu=22.3



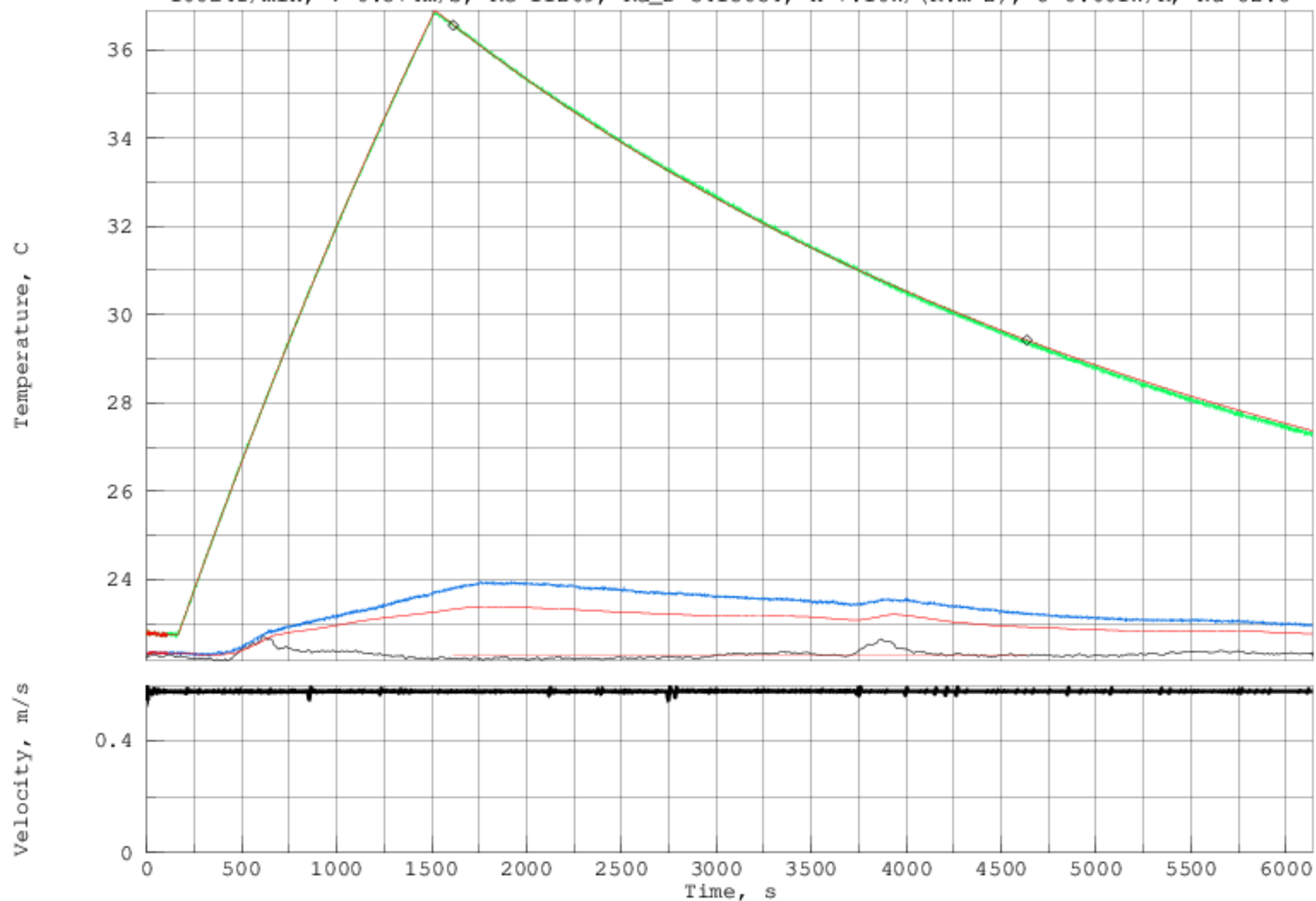
20160806T172853Z - mixed Convection - Roughness=3.00mm; T=22.9+11.1°C; +90.00°
40±3r/min, V=0.143m/s, Re=2738, Ra_D=3504562, h=2.04W/(K.m²), U=0.190W/K, Nu=23.7



20160807T035725Z - mixed Convection - Roughness=3.00mm; T=24.5+10.2°C; +90.00°
80±4r/min, V=0.288m/s, Re=5499, Ra_D=3177521, h=3.55W/(K.m²), U=0.330W/K, Nu=41.2

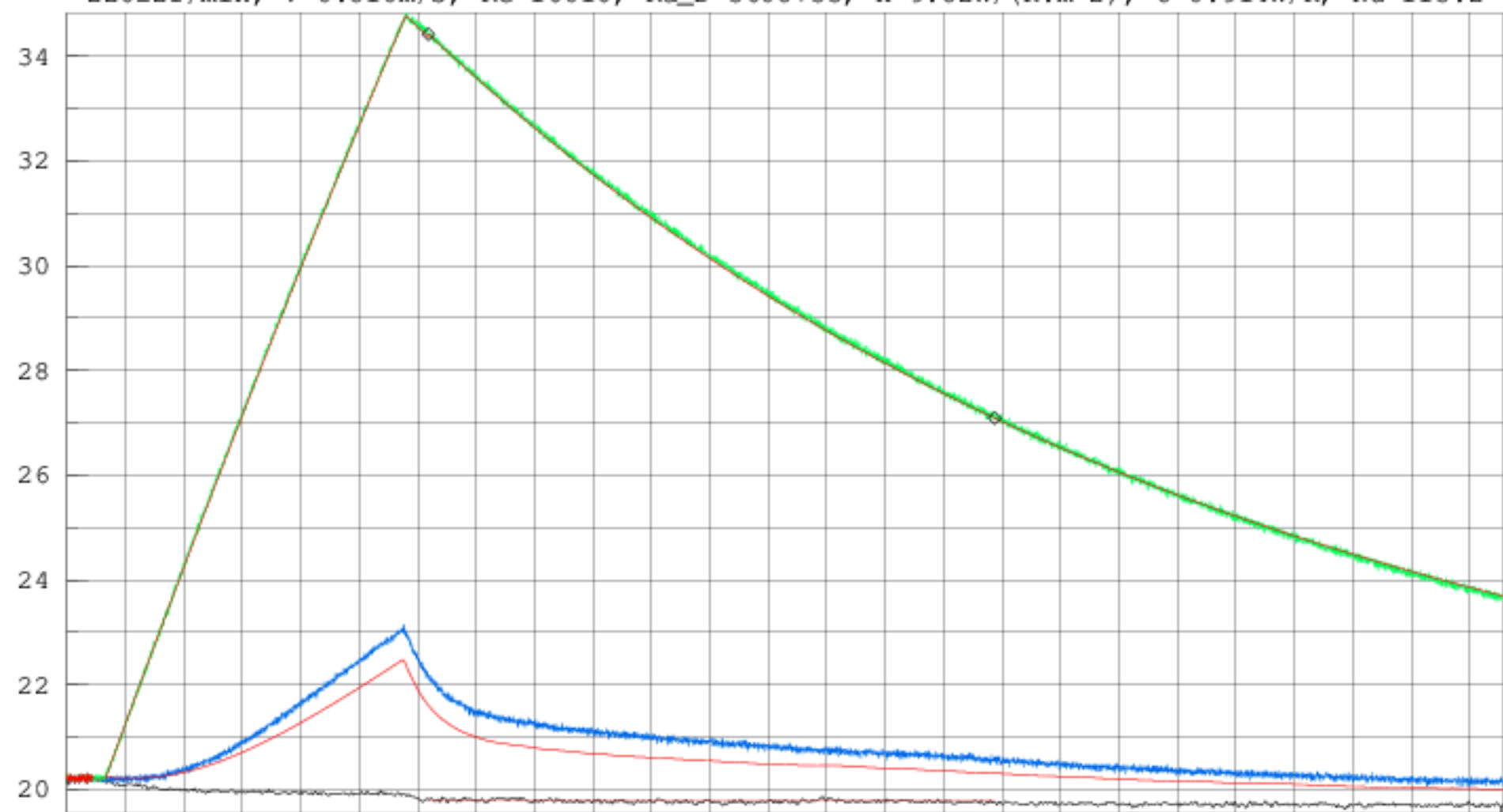


20160809T115735Z - mixed Convection - Roughness=3.00mm; T=22.3+10.3°C; +90.00°
160±4r/min, V=0.574m/s, Re=11269, Ra_D=3415054, h=7.10W/(K.m²), U=0.661W/K, Nu=82.8

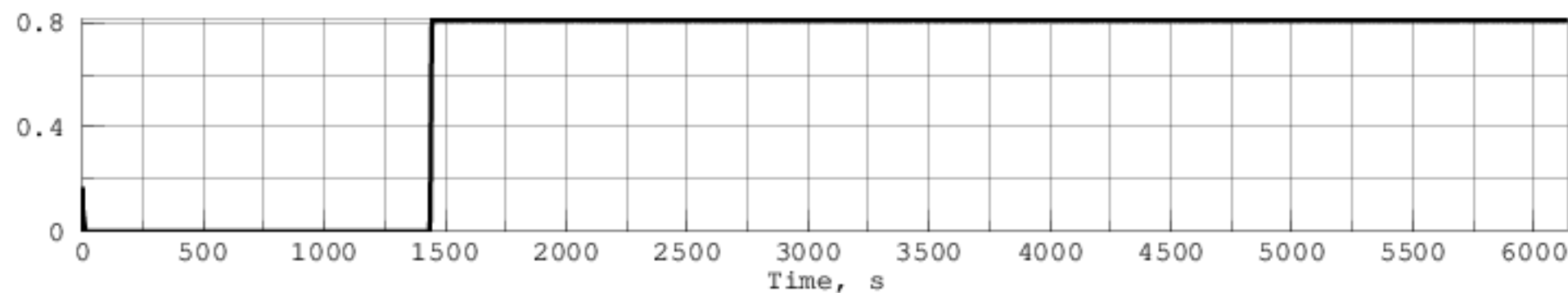


20161009T193743Z - mixed Convection - Roughness=3.00mm; T=19.8+10.6°C; +90.00°
226±2r/min, V=0.810m/s, Re=16016, Ra_D=3608733, h=9.82W/(K.m²), U=0.914W/K, Nu=115.2

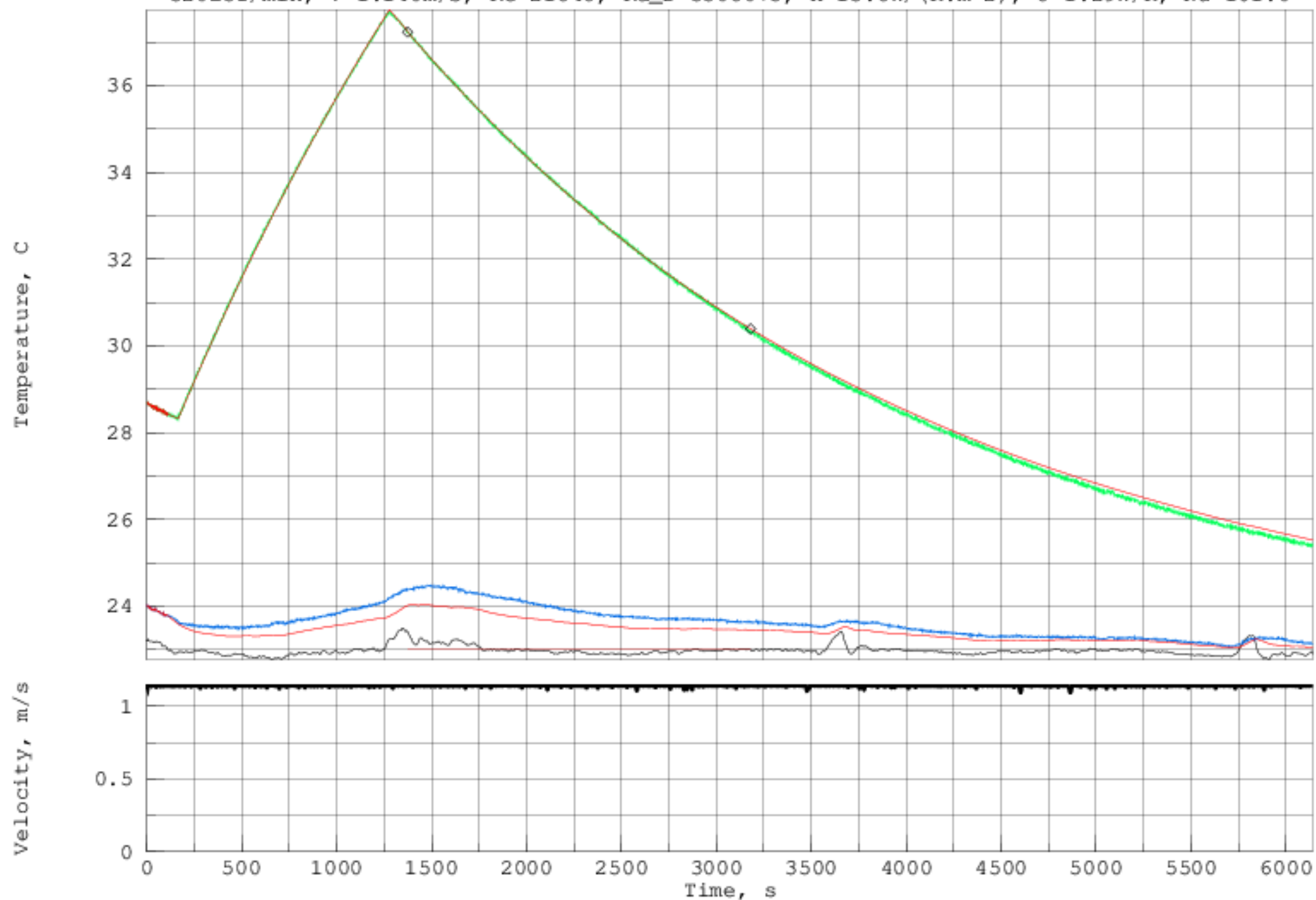
Temperature, C



Velocity, m/s

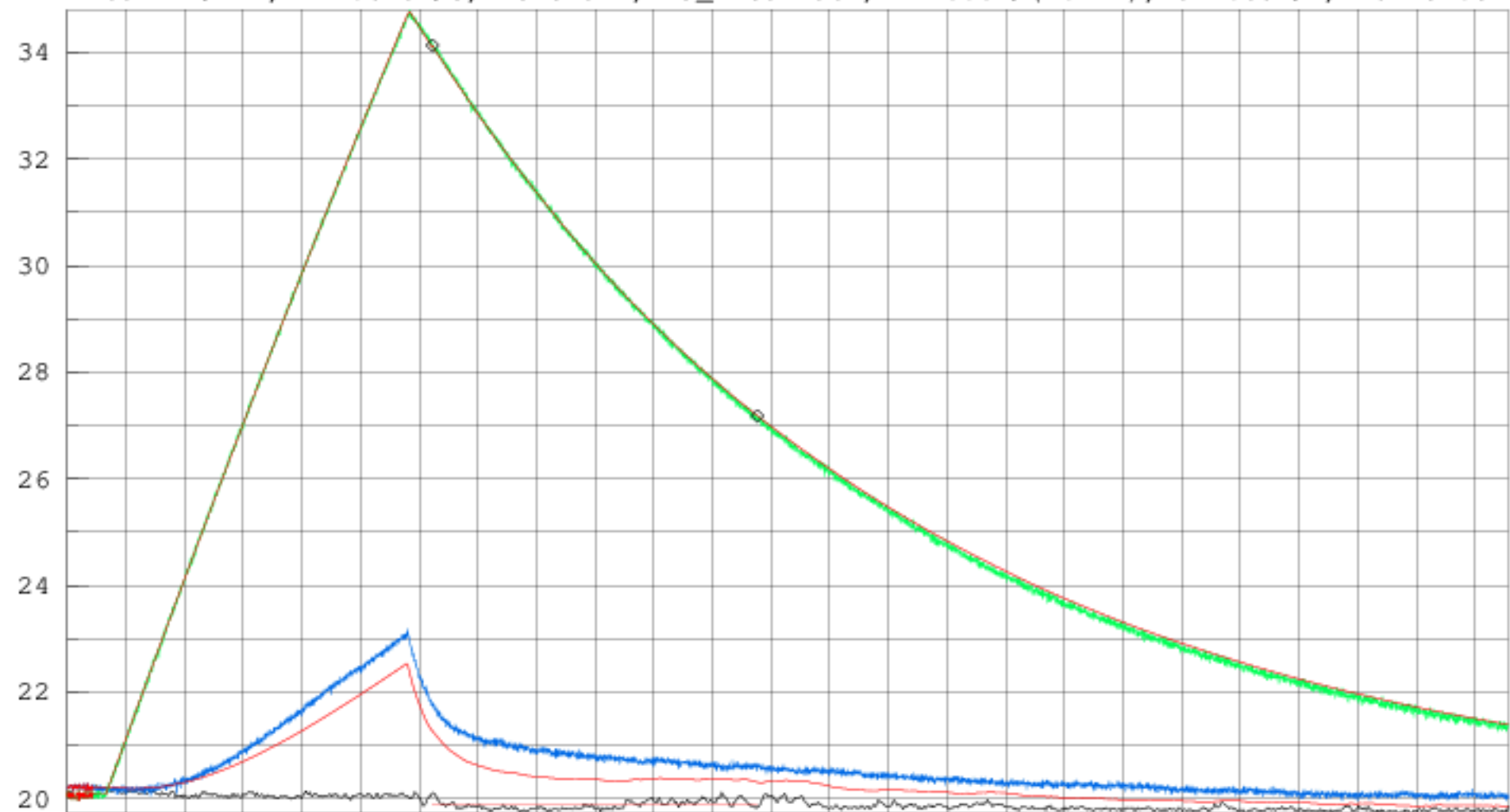


20160806T195314Z - mixed Convection - Roughness=3.00mm; T=23.0+10.4°C; +90.00°
320±3r/min, V=1.140m/s, Re=21848, Ra_D=3308075, h=13.8W/(K.m²), U=1.29W/K, Nu=161.0

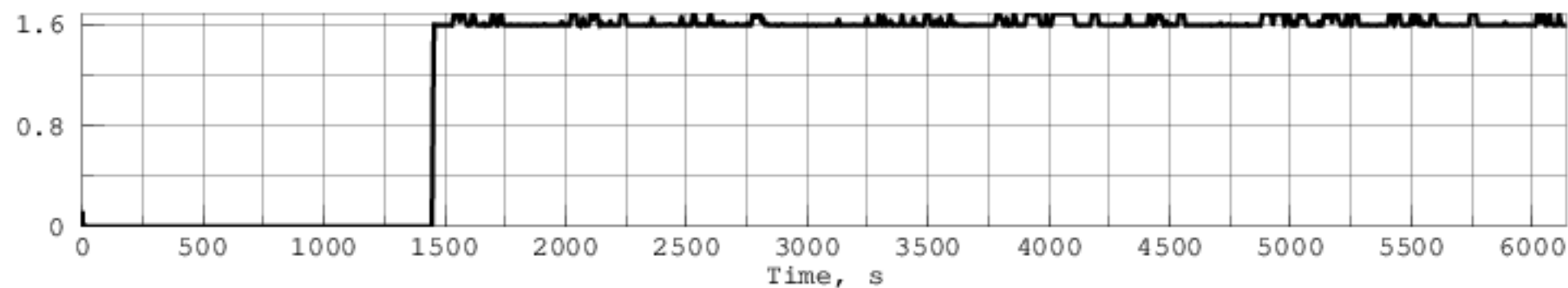


20161009T124341Z - mixed Convection - Roughness=3.00mm; T=19.9+10.4°C; +90.00°
458±11r/min, V=1.615m/s, Re=31944, Ra_D=3527954, h=20.0W/(K.m²), U=1.86W/K, Nu=234.3

Temperature, C

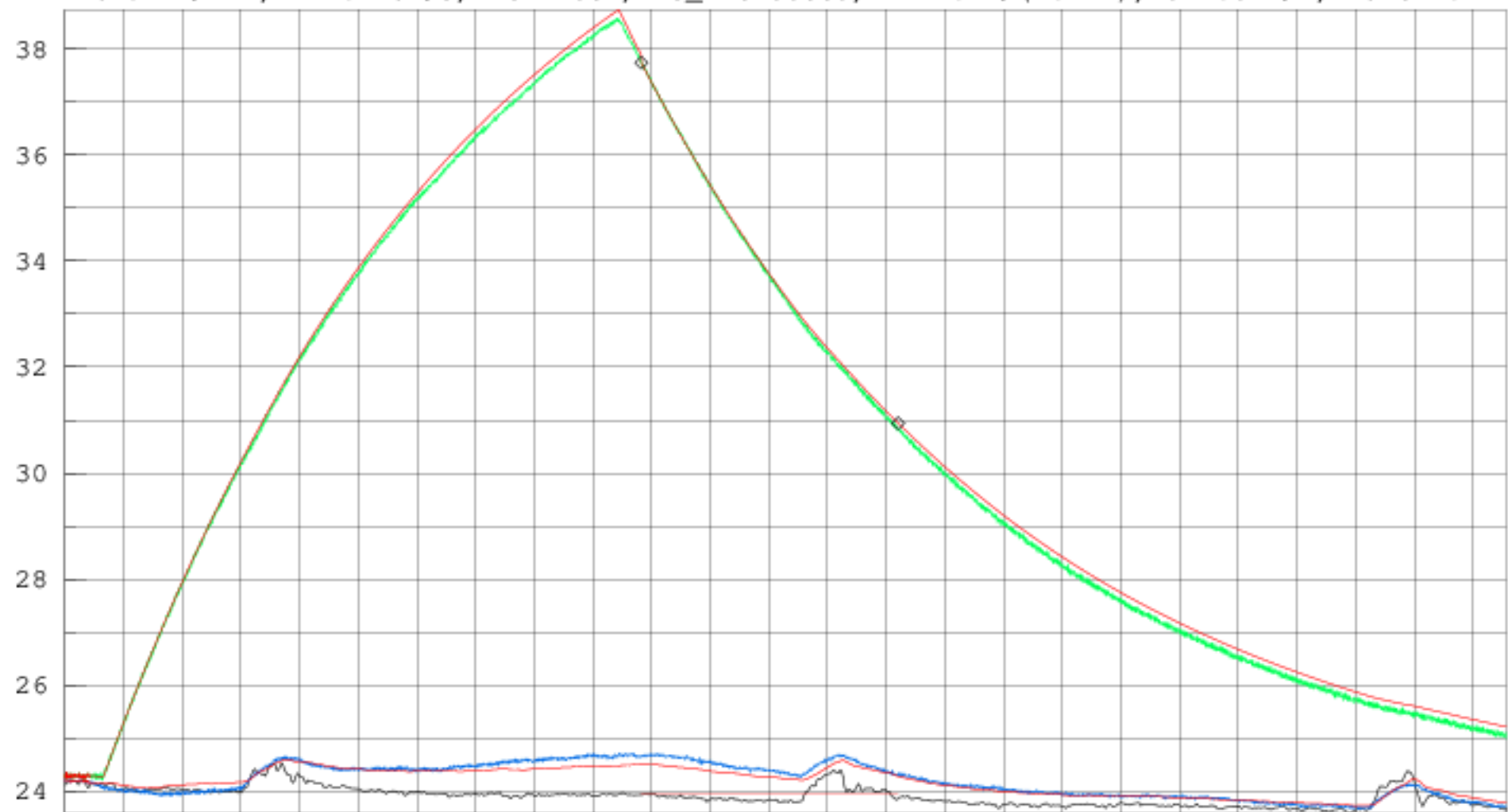


Velocity, m/s

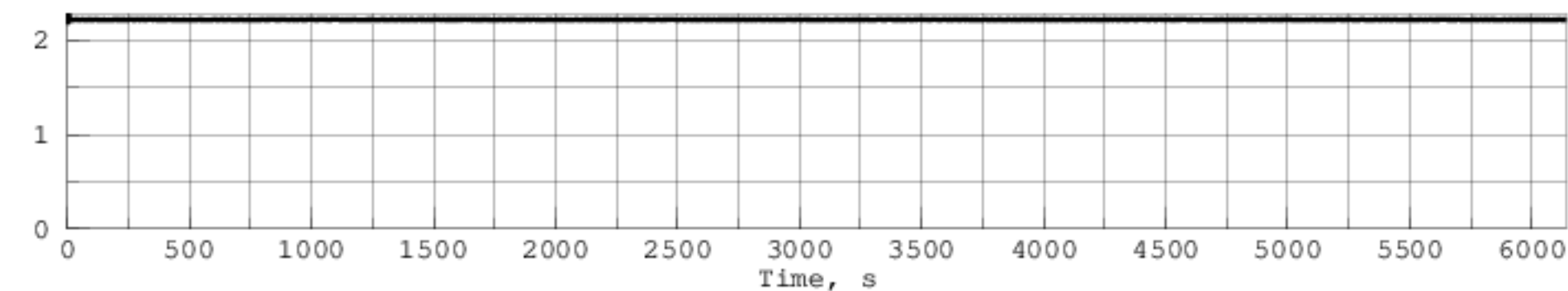


20160807T144333Z - mixed Convection - Roughness=3.00mm; T=23.9+10.0°C; +90.00°
640±4r/min, V=2.216m/s, Re=42537, Ra_D=3158335, h=27.1W/(K.m²), U=2.52W/K, Nu=314.7

Temperature, C

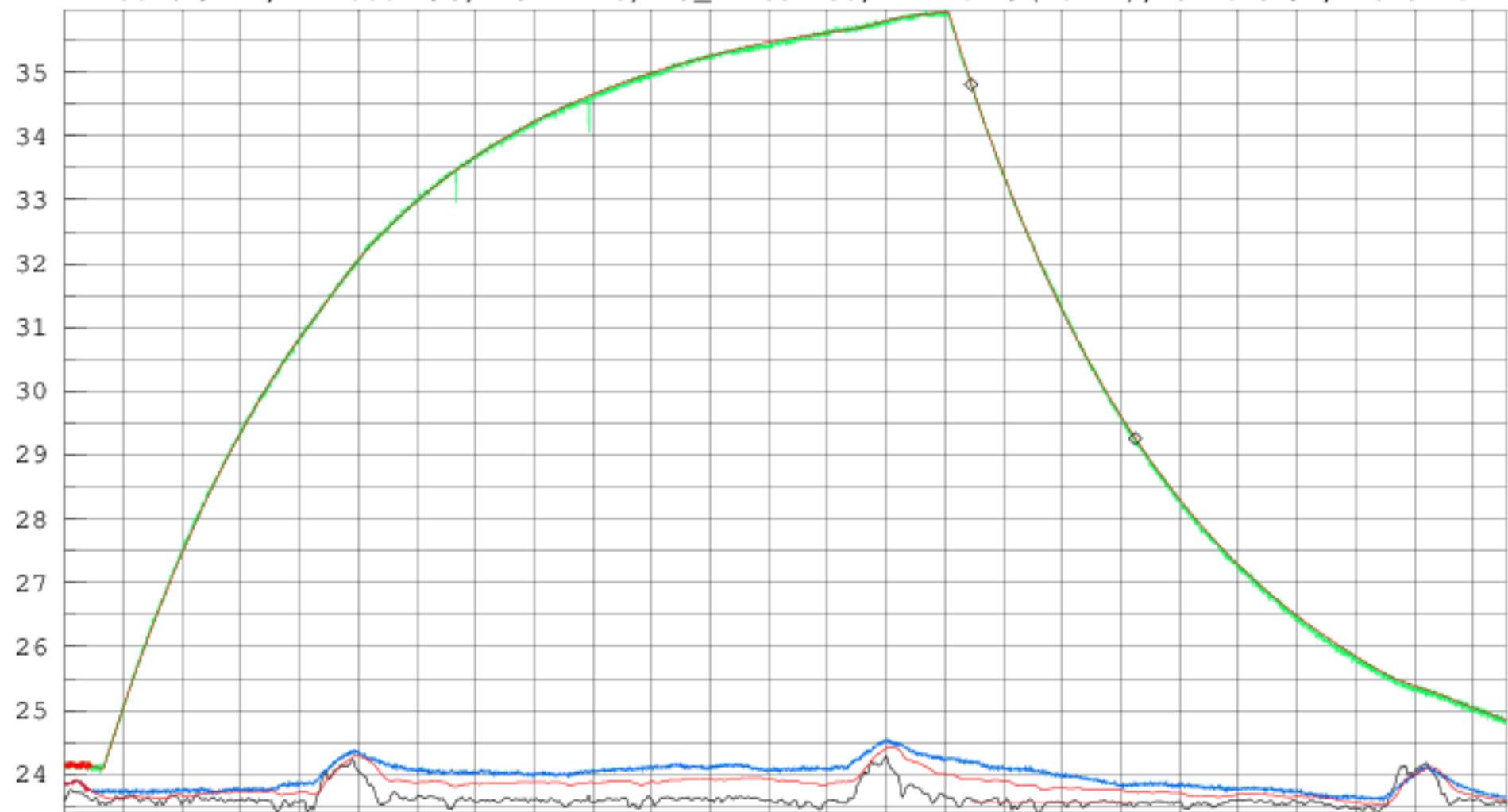


Velocity, m/s

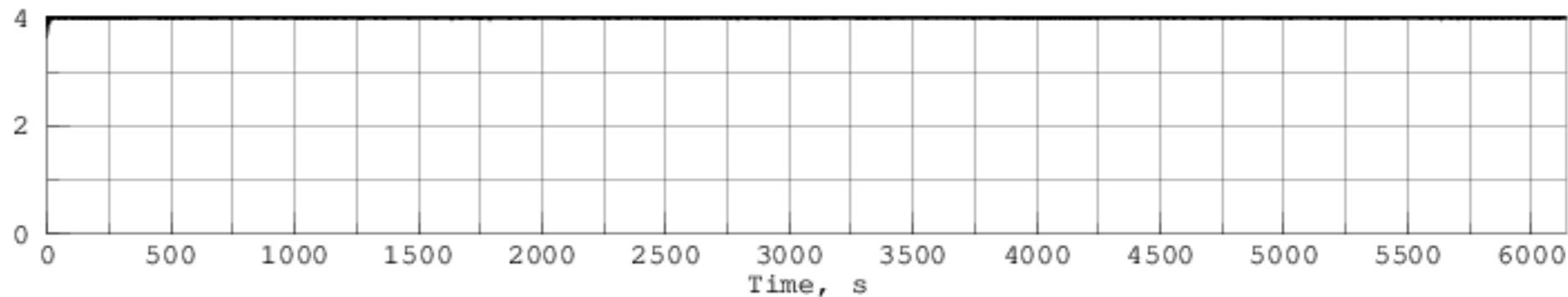


20160807T171527Z - mixed Convection - Roughness=3.00mm; T=23.5+08.2°C; +90.00°
1280±6r/min, V=4.002m/s, Re=77410, Ra_D=2652290, h=44.4W/(K.m²), U=4.13W/K, Nu=517.7

Temperature, C

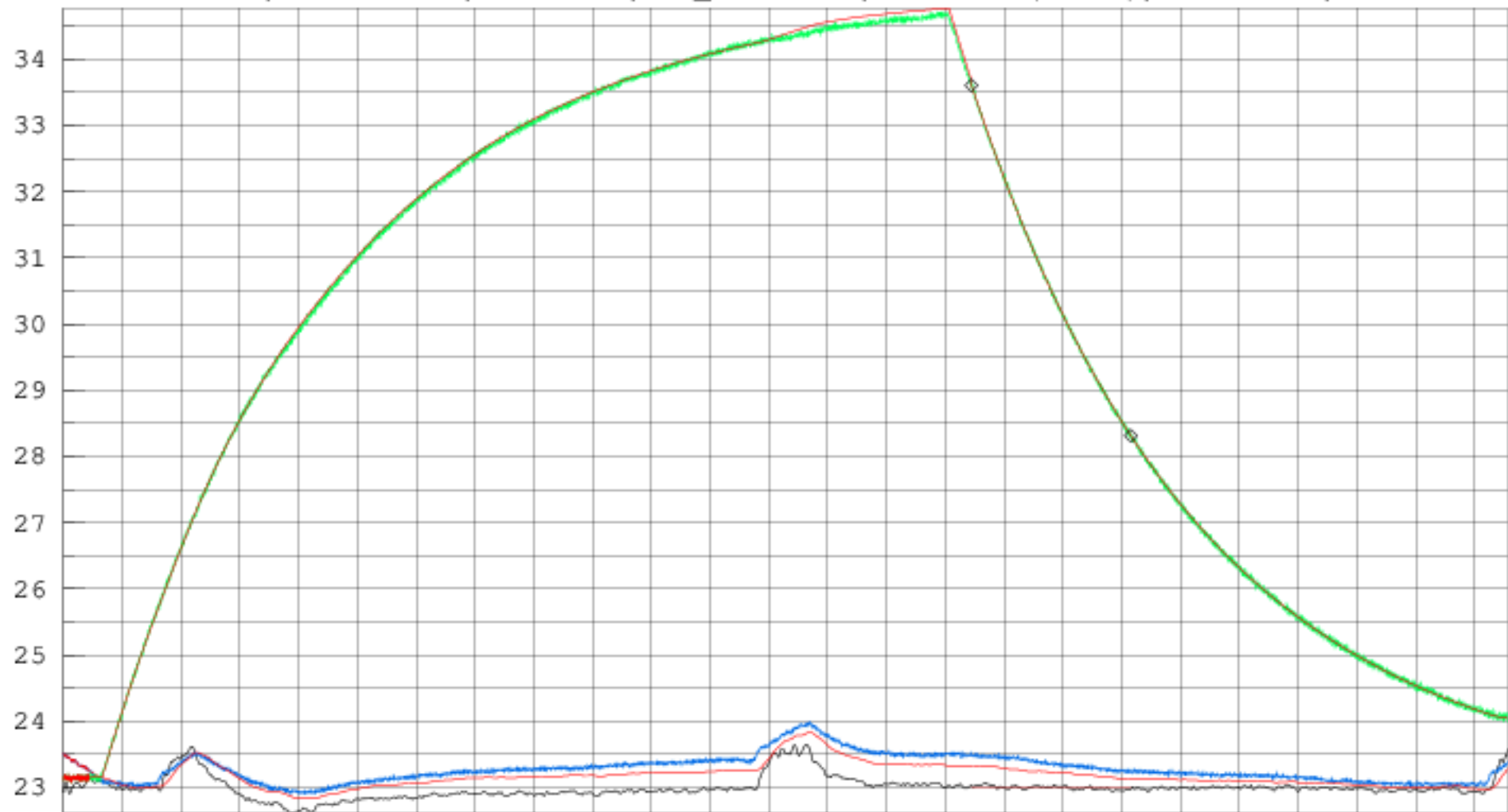


Velocity, m/s



20160829T235956Z - mixed Convection - Roughness=3.00mm; T=23.0+07.7°C; +90.00°
1400±6r/min, V=4.275m/s, Re=83905, Ra_D=2568510, h=46.3W/(K.m²), U=4.31W/K, Nu=540.6

Temperature, C



Velocity, m/s

