

Camwil Inc.

11821 WEST PICO BOULEVARD
LOS ANGELES, CALIFORNIA 90064
Phone 473-9648

1 July 1965

PRICE LIST
for
SPECIAL TYPING ELEMENTS

1. Spot changes: \$34.00, one change, one element
12.00 each additional change to same element

Delivery depends on specific requirements and varies from one to three weeks.

2. Molded elements: \$200.00, basic setup charge
25.00 each standard character located in other than normal position
35.00 each element produced

The first two charges are non-recurring for any given set of specifications.

Delivery, six to eight weeks for first element.

Note: There is a one-time art work charge of \$50.00 for any special character, i.e., company logo, proprietary symbols, etc.

Extra charges may also be imposed for character placement which creates special problems in achieving satisfactory typing performance.

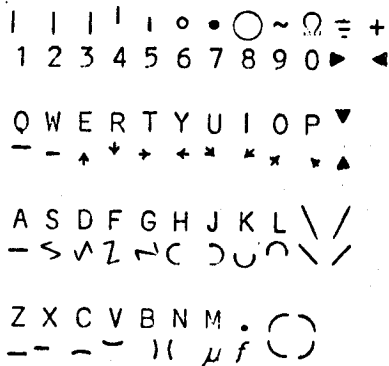
Prices are subject to change without notice.

Camwil Inc.

11821 West Pico Boulevard
Los Angeles, California

THIS MESSAGE AND THE FOLLOWING ELECTRONIC SYMBOLS AND DIAGRAMS WERE TYPED WITH A SINGLE TYPE HEAD DEVELOPED BY CAMWIL INC. INSTALLED IN AN IBM SELECTRIC TYPEWRITER.

KEYBOARD LAYOUT-



RESISTOR

SWITCH

CAPACITOR

POTENTIOMETER

RELAY

FUSE

RECTIFIER

GROUND

VARIABLE CAPACITOR

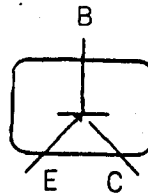
BATTERY

CHOKE

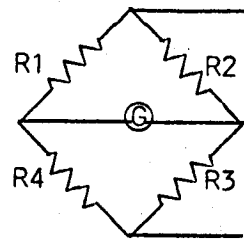
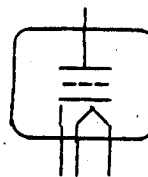
TRANSFORMER

LAMP

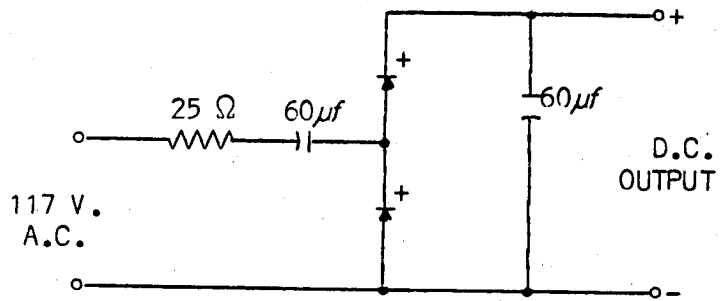
TRANSISTOR



VACUUM TUBE



RESISTANCE BRIDGE



HALF-WAVE VOLTAGE DOUBLER

CAMWIL PART NO. 120-M

Camwil Inc.

11821 Pico Boulevard
Los Angeles, California

The following are some of the special elements available from Camwil Inc.:

18-M, Library

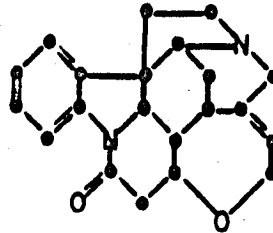
'+~()ç&§() + `234567890--
QWERTYUIOP° qwertyuioþ
ASDFGHJKL:" asdfghjkl;'
ZXCVBNM^~? zxcvbnm,./

67-M, Chemical

//|||o|←\\| (1234567890+)
QWERTYUIOPo qwertyuioþ-
ASDFGHJKL:• asdfghjkl<>
ZXCVBNM*~ zxcvbnm,.@

33-M, Double case BCD

'@#=\$=ç?*()<> 1234567890Δ+
QWERTYUIOP" qwertyuioþ-
ASDFGHJKL;_ asdfghjkl&%
ZXCVBNM,.: zxcvbnm,./



38-M, BCD with PICA numerals

■ ■ ■ : @ √ > ■ ■ b ç _ 1234567890*#
■ " ■ ■ ■ ■ ■ = Δ ; - QWERTYUIOP-
■ (■ < ■ ■ ■ ■ & ■ ASDFGHJKL&\$
■ ' ■ % ■ *) ■ ~ ■ ZXCVBNM,./

107-M, Optical Scanning Font

‡ † * ç % Δ & * [] → 1234567890--=
QWERTYUIOP| QWERTYUIOP|
ASDFGHJKL:∇ ASDFGHJKL;∇
ZXCVBNM,.? ZXCVBNM,./

55-M, Russian (Cyrillic)

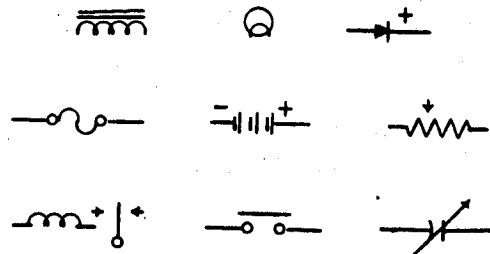
124567890ЦЭ?! §-"%:.№,цэ()
ЙУКЕНГШЩЗХ; йукенгшщзх_
Ф*ВАПРОЛДЖ/ фывапролдж
ЯЧСМИТЬБЮ ячсмитьбю'

120-M, Electronic

|||!|o●○⊕+ 1234567890▶◀
QWERTYUIOP∇ - - + + + + + +
ASDFGHJKL∇ - - ∇ - ∇ - ∇ -
ZXCVBNM.○ = - - | μ √

102-M, International Language (Types 88 languages)

i ð ~ - £ , β § () ° `23456789ø-æ
QWERTYUIOP~ qwertyuioþ'
ASDFGHJKL~" asdfghjkl:'
ZXCVBNM^~? zxcvbnm,./



122-M, Klerer-May

φ α ω π θ β ε 0 + 1234567890--=
QWERTYUIOPη >wertyuilδþ
ASDFGHJKL} { τ μ δ ν < x j k θ γ Δ
ZXCVBNM~ zxcvbnm, n ≥ , . /

Camwil Inc.

11821 WEST PICO BOULEVARD
LOS ANGELES, CALIFORNIA 90064
Phone 473-9648

July 1, 1965

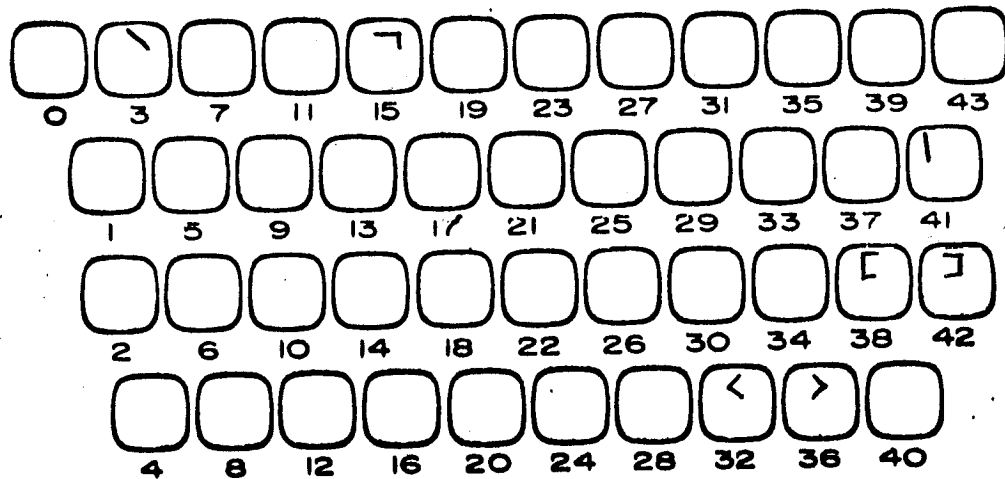
Price List - Stock Molded Typewriter Elements

<u>PART NUMBER</u>	<u>PRICE</u>	<u>PART NUMBER</u>	<u>PRICE</u>
1-M	\$35.00	41-M	\$35.00
2-M	35.00	51-M	35.00
8-M	35.00	55-M	60.00
9-M	35.00	58-M	35.00
11-M	35.00	62-M	35.00
12-M	35.00	67-M	60.00
18-M	36.00	80-M	35.00
25-M	35.00	102-M	40.00
26-M	35.00	107-M	35.00
27-M	35.00	111-M	35.00
28-M	35.00	120-M	60.00
29-M	35.00	122-M	35.00
32-M	35.00	127-M	35.00
33-M	35.00	128-M	35.00
34-M	35.00	137-M	35.00
38-M	35.00		

Prices subject to change without notice.

	0	3	7	11	15	19	23	27	31	35	39	43
	1	5	9	13	17	21	25	29	33	37	41	
	2	6	10	14	18	22	26	30	34	38	42	
	4	8	12	16	20	24	28	32	36	40		

CAMWIL Ball 184-M

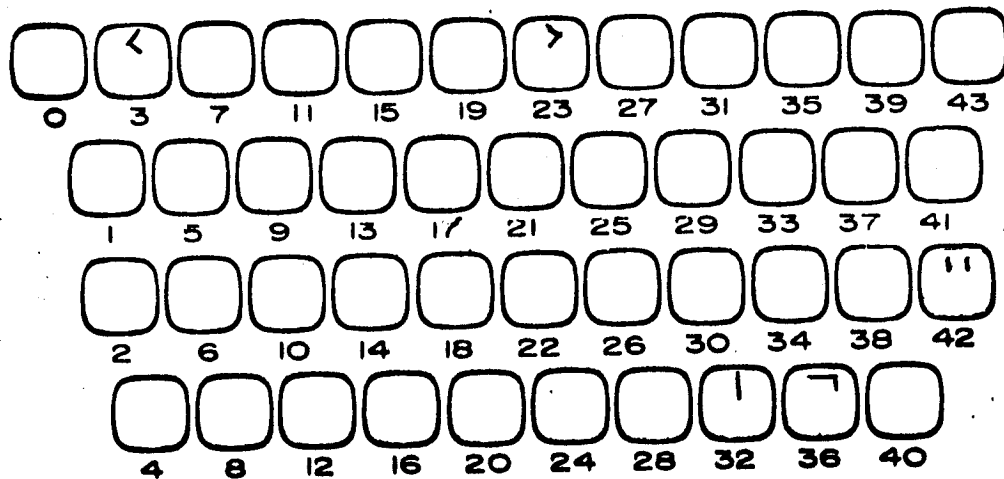


"MAC"^{II} Keyboard, as variation from
standard correspondence keyboard.

7 Key caps change

JAS
12/14/65

Obsolete
12/21/65



360 Extended BCD Keyboard, as variation from
 Standard Correspondence Keyboard. (Ball 963)

S Key caps change.

JAS
 12/14/65

ASCII character set on Multics

Checked Graphics on
963 Ball
(Extended BCD)

J.A. [unclear]
12/14/68

	0	1	2	3	4	5	6	7	
0000	NUL	(SOH)	(STX)	(ETX)	(EOT)	ENQ	(ACK)	BEL	↑ C O N T R O L
0010	BS	HT	NL	VT	FF	CR	(SO)	(SE)	
0020	(dle)	RHT	HLF	CS	HLR	(NAK)	(SH)	(ETB)	
0030	(CAN)	(EM)	(SS)	ESC	(FS)	(GS)	(RS)	(US)	
0040	space	! ✓	" ✓	# ✓	\$ ✓	% ✓	& ✓	' ✓	↑ g r a p h i c
0050	(✓) ✓	* ✓	+ ✓	, ✓	- ✓	. ✓	/ ✓	
0060	0 ✓	1 ✓	2 ✓	3 ✓	4 ✓	5 ✓	6 ✓	7 ✓	
0070	8 ✓	9 ✓	: ✓	; ✓	< ✓	= ✓	> ✓	? ✓	
0100	'	A ✓	B ✓	C ✓	D ✓	E ✓	F ✓	G ✓	
0110	H ✓	I ✓	J ✓	K ✓	L ✓	M ✓	N ✓	Ø ✓	
0120	P ✓	Q ✓	R ✓	S ✓	T ✓	U ✓	V ✓	W ✓	
0130	X ✓	Y ✓	Z ✓	[✓	~ ✓] ✓	^ ✓	_ ✓	
0140	@ ✓	a ✓	b ✓	c ✓	d ✓	e ✓	f ✓	g ✓	
0150	h ✓	i ✓	j ✓	k ✓	l ✓	m ✓	n ✓	o ✓	
0160	p ✓	q ✓	r ✓	s ✓	t ✓	u ✓	v ✓	w ✓	
0170	x ✓	y ✓	z ✓	{ ✓	~ ✓	} ✓	✓	DEL	

Defined Escape Sequences:

char	Esc Sequence
RVT	ESC VT

Local Definitions:

NL	New Line (Carriage Return + Line Feed)
RHT	Relative Horizontal Tabulate (Followed by tab size)
RVT	Relative Vertical Tabulate (Followed by tab size)
HLF	Half-Line Forward Feed
HLR	Half-Line Reverse Feed
CS	Color Shift (followed by color designator.)

Missing	Extra
'	'
^	φ
[
~	
]	
{	
}	

ASCII character set on Multics

Checked Graphics on
MAC Ball

J.A. Sullivan
12/14/65

	0	1	2	3	4	5	6	7	
0000	NUL	(SOH)	(STX)	(ETX)	(EOT)	ENQ	(ACK)	BEL	A C O N T R O L
0010	BS	HT	NL	VT	FF	CR	(SO)	(SE)	
0020	(dle)	RHT	HLF	CS	HLR	(NAK)	(SH)	(ETB)	
0030	(CAN)	(EM)	(SS)	ESC	(FS)	(GS)	(RS)	(US)	
0040	space	!	"✓	#✓	\$✓	%	&✓	'	g r a p h i c 94
0050	(✓)✓	*✓	+✓	,✓	-✓	.✓	/✓	
0060	0✓	1✓	2✓	3✓	4✓	5✓	6✓	7✓	
0070	8✓	9✓	:✓	;✓	<✓	=✓	>✓	?✓	
0100	'	A✓	B✓	C✓	D✓	E✓	F✓	G✓	
0110	H✓	I✓	J✓	K✓	L✓	M✓	N✓	Ø✓	
0120	P✓	Q✓	R✓	S✓	T✓	U✓	V✓	W✓	
0130	X✓	Y✓	Z✓	[✓	~]✓	^	_✓	
0140	@✓	a✓	b✓	c✓	d✓	e✓	f✓	g✓	
0150	h✓	i✓	j✓	k✓	l✓	m✓	n✓	o✓	
0160	p✓	q✓	r✓	s✓	t✓	u✓	v✓	w✓	
0170	x✓	y✓	z✓	{	⌋	}		DEL	

Defined Escape Sequences:

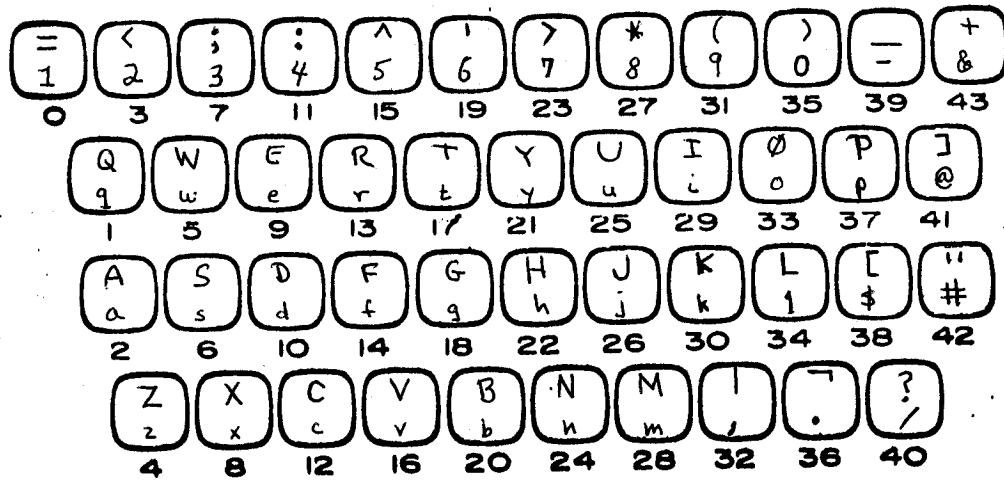
char	ESC Sequence
RVT	ESC VT

Local Definitions:

- NL New Line (Carriage Return + Line Feed)
- RHT Relative Horizontal Tabulate (Followed by tab size)
- RVT Relative Vertical Tabulate (Followed by tab size)
- HLF Half-Line Forward Feed
- HLR Half-Line Reverse Feed
- CS Color Shift (followed by color designation)

Missing	Extra
!	
%	
'	
~	
^	
{	
}	

Centered
left justified



MAC III Keyboard Layout

12/21/65 JHS

Changes from ball 963 (EB01C, 360 ball)

- Sector 6: ! becomes [(Key 38 Upper)
- Sector 9: ¢ becomes] (Key 41 Upper)
- Sector 10: % becomes ^ (Key 15 Upper)

Key Cap changes from Correspondence Keyboard:

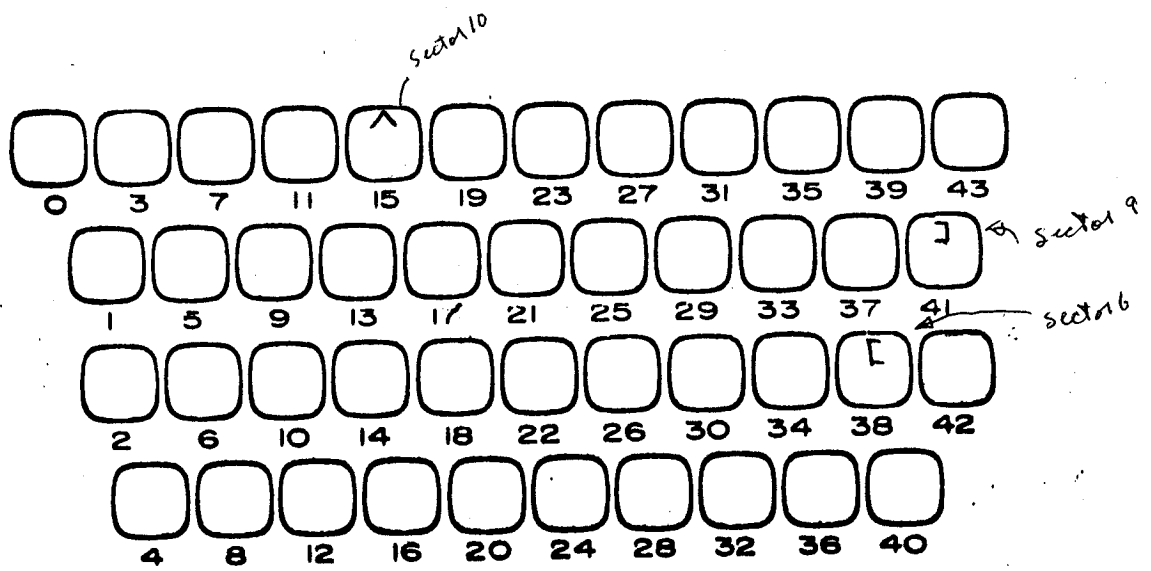
- Key 3 upper: II becomes <
- Key 15 upper: % " ^
- Key 23 upper: " becomes >
- Key 38 Upper: ! " [
- Key 41 Upper: ¢ "]
- Key 42 Upper: ± becomes "
- Key 32 Upper: } becomes |
- Key 36 Upper: • becomes ^

Changes to 1050 Table for MAC III ball.

Graphic	Code	Old Key	New Key
<	152	32 upper	3 upper
>	155	36 upper	23 upper
]	101	42 upper	41 upper
\ (^)	102	3 upper	15 upper
	100	41 upper	32 upper
⌊	105	15 upper	36 upper
"	137	23 upper	42 upper

Also allow input of $\left\{ \begin{array}{l} 152 (<) \text{ from } 3 \text{ upper} \\ 155 (>) \text{ from } 23 \text{ upper} \end{array} \right.$

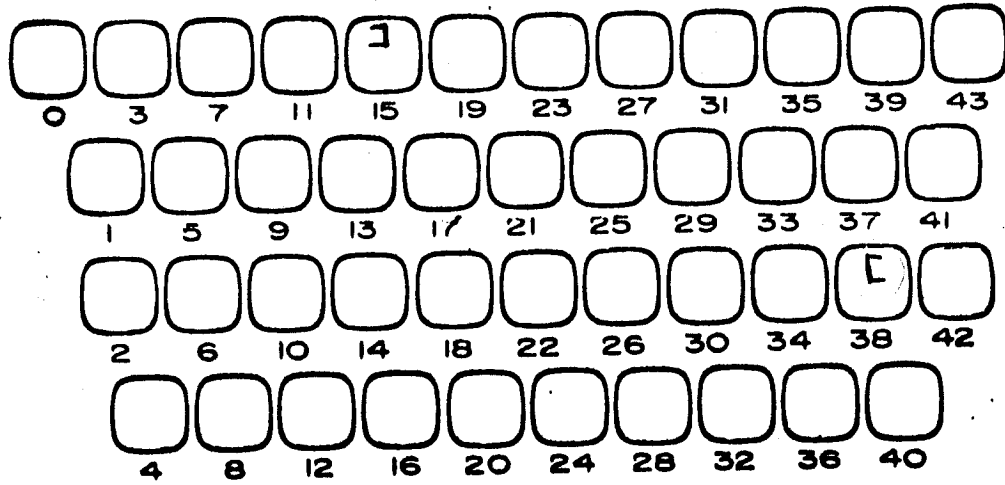
12/21/65 JHS



Mac Proposal III as variation from 963 balls
 (Extended BCD ball)

12/21/65

was: 9/5



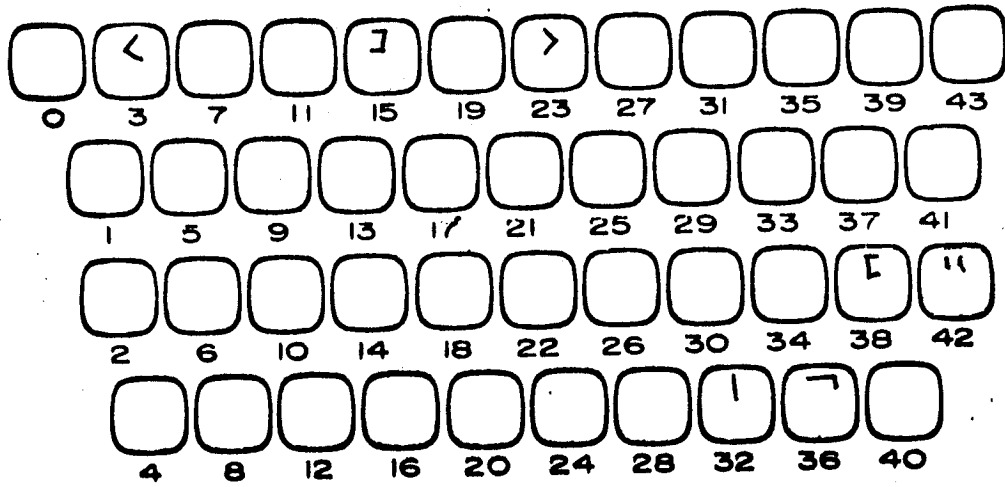
was!

MAC Proposal III, as variation from
360 Extended BCD keyboard

2 Key Caps change.

Not done - see
later version

JAS
12/14/65



MAC Proposal III, as variation from
standard correspondence keyboard

J Key Caps change

Obsolete 12/21/65

JASolfer
12/14/65

IBM

RPQ

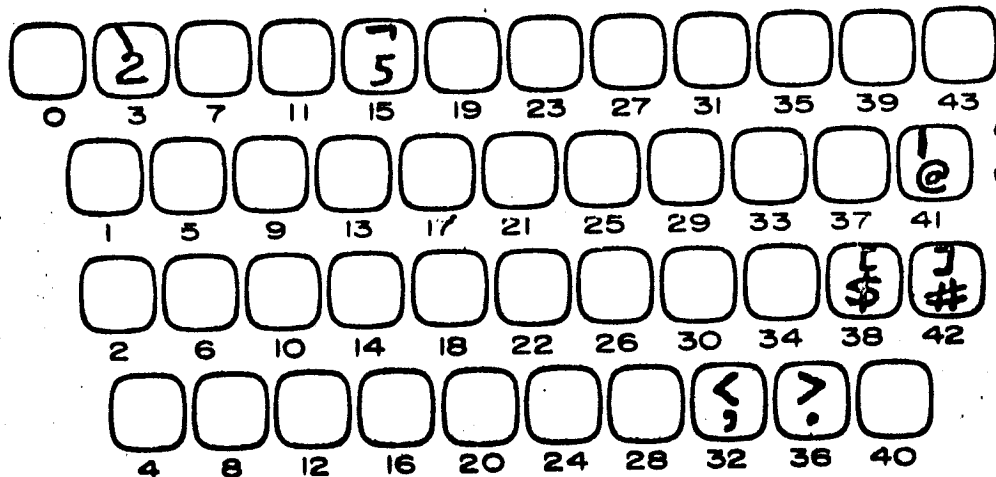
PART NUMBER E 39925

MAC
Final Layout

TYPE STYLE DATA #1

KEYBOARD REVISION #1
PER BOB MAXSON

MAC II



LEFT JUSTIFIED OVER @

925 NEW NEW NEW 927 NEW 925 927 927 925 927

= ;	7 "	*)	\ :	' (] 1	3 5	7 8	0 2	4 6	9 #
? T	V X	Y I	S U	W Z	< /	t v	x y	@ s	u w	z ,
J L	N P	Q -	K M	O R	[j	i n	p q	- k	m o	r \$
A C	E G	H +	B D	F I	> a	c e	g h	& b	d f	i .

NOTE:

LAYOUT MUST BE APPROVED BY CUSTOMER

Bob Bailey
10-4-65
TYPE DESIGN DEPT.

=\;:-'!"*()_+
1234567890-=&
QWERTYUIOP
qwertyuiop@

ASDFGHJKL[]
asdfghjkl\$#

ZXCVBNM<>?
zxcvbnm,./

Projected
"MAC" Ball

As will appear
on 1050

MAE II

left justify

=[];:%'!"*()_+
1234567890-&

"Standard Correspondence"

QWERTYUIOPç
qwertyuiop@

938

ASDFGHJKL!±
asdfghjkl!\$#

ZXCVBNM,.?
zxcvbnm,./

Printed on 1050

=c;:%!"*()_+
1234567890-&

QWERTYUIOP°
qwertyuiop@

ASDFGHJKL!±
asdfghjkl!\$#

ZXCVBNM,.?
zxcvbnm,./

"Correspondence"

927

Printed on 1050

=<:;%!'>*()_+
1234567890-&

"360" Ball

QWERTYUIOP&
qwertyuiop@

(Extended BCD)

ASDFGHJKL!"
asdfghjk1\$#

*963 Printed

ZXCVBNM|~?
zxcvbnm,./

on a 1050

SCORE BUSINESS FORMS, INC. STIC. MADE IN U.S.A.

942 ball on a 1050

>);\$(:"*[]\<
1234567890-+

QWERTYUIOPΔ
qwertyuiop'

ASDFGHJKL!#
asdfghjkl\$=

ZXCVBNM, .?
zxcvbnm, ./

[@#%&*() +
]234567890--

QWERTYUIOP°
qwertyuiop!

ASDFGHJKL:"
asdfghjkl;'

ZXCVBNM,.?
zxcvbnm,./

Selectric
Ball #012

typed on
Selectric

12" carriage

Output test of all CTSS graphics.

lower case alphabet
abcdefghijklmnopqrstuvwxyz

numerals
1234567890

upper case alphabet
ABCDEFGHIJKLMNOPQRSTUVWXYZ

special characters.

= equals
' acute accent (apostrophe)
+ plus sign
. period
) close parenthesis
: colon
- minus sign
\$ dollar sign
* asterisk
/ slant
, comma
(open parenthesis
vertical line
] close square bracket
left slant
; semicolon
number sign
overline (not sign)
@ commercial at sign
% percent sign
! exclamation point
& ampersand
circumflex
" double quote
underline
- less than sign
[open square bracket
greater than sign
? question mark
open quote
open brace
close brace

Output test of all CTSS graphics.

lower case alphabet
abcdefghijklmnopqrstuvwxyz

numerals
1234567890

upper case alphabet
ABCDEFGHIJKLMNOPQRSTUVWXYZ

special characters.

- = equals
- ' acute accent (apostrophe)
- + plus sign
- . period
-) close parenthesis
- : colon
- minus sign
- \$ dollar sign
- * asterisk
- / slant
- ,
- (open parenthesis
- vertical line
-] close square bracket
- left slant
- ; semicolon
- # number sign
- overline (not sign)
- @ commercial at sign
- % percent sign
- ! exclamation point
- & ampersand
- circumflex
- " double quote
- underline
- less than sign
- [open square bracket
- greater than sign
- ? question mark
- open quote
- open brace
- close brace

Output test of all CTSS graphics.

lower case alphabet
abcdefghijklmnopqrstuvwxyz

numerals
1234567890

upper case alphabet
ABCDEFGHIJKLMNOPQRSTUVWXYZ

special characters.

= equals
' acute accent (apostrophe)
+ plus sign
. period
) close parenthesis
: colon
- minus sign
\$ dollar sign
* asterisk
/ slant
, comma
(open parenthesis
| vertical line
] close square bracket
\ left slant
; semicolon
number sign
~ overline (not sign)
@ commercial at sign
percent sign
exclamation point
& ampersand
circumflex
" double quote
_ underline
< less than sign
[open square bracket
> greater than sign
? question mark
open quote
open brace
close brace

Output test of all CTSS graphics.

lower case alphabet
abcdefghijklmnopqrstuvwxyz

numerals
1234567890

upper case alphabet
ABCDEFGHIJKLMNOPQRSTUVWXYZ

special characters.

= equals
' acute accent (apostrophe)
+ plus sign
. period
) close parenthesis
: colon
- minus sign
\$ dollar sign
* asterisk
/ slant
, comma
(open parenthesis
vertical line
close square bracket
left slant
; semicolon
number sign
overline (not sign)
@ commercial at sign
% percent sign
! exclamation point
& ampersand
circumflex
" double quote
_ underline
- less than sign
open square bracket
greater than sign
? question mark
open quote
open brace
close brace

Output test of all CTSS graphics.

lower case alphabet
abcdefghijklmnopqrstuvwxyz

numerals
1234567890

upper case alphabet
ABCDEFGHIJKLMNOPQRSTUVWXYZ

special characters.

= equals
' acute accent (apostrophe)
+ plus sign
. period
) close parenthesis
: colon
- minus sign
\$ dollar sign
* asterisk
/ slant
, comma
(open parenthesis
| vertical line
] close square bracket
left slant
; semicolon
number sign
overline (not sign)
@ commercial at sign
% percent sign
! exclamation point
& ampersand
circumflex
" double quote
underline
< less than sign
[open square bracket
> greater than sign
? question mark
open quote
open brace
close brace

Camwil Ball 184-m:

=\;:~'!"*()_+
1234567890-&

QWERTYUIOP
qwertyuiop@

ASDFGHJKL[]
asdfghjkl\$#

ZXCVBNM<>?
zxcvbnm,./

1403
Condensed
Output

Output test of all CTSS graphics.

lower case alphabet
abcdefghijklmnopqrstuvwxyz

numerals
1234567890

upper case alphabet
ABCDEFGHIJKLMNOPQRSTUVWXYZ

special characters.

- = equal sign
- ▀ close quote or apostrophe
- + plus sign
- . period
-) close parenthesis
- : colon
- minus sign
- \$ dollar sign
- * asterisk
- / slash
- , comma
- (open parenthesis
- | vertical bar or up arrow ←
-] close square bracket
- \ left slash or circumflex ←
- ; semicolon
- # number sign
- not sign or hooked overbar ←
- @ commercial at sign ←
- % percent sign
- ! exclamation point
- & ampersand
- ~~~ tilde~~ ← left slash
- " double quote
- _ underbar
- < less than sign
- [open square bracket
- > greater than sign
- ? question mark
- ⌞ open quote ←
- { open brace
- } close brace

(TSAC change)

(TSAC change)

r runoff otest with ball 938 nostop
W 1451.4
Load paper, hit return

Output test of all CTSS graphics.

lower case alphabet
abcdefghijklmnopqrstuvwxyz

numerals
1234567890

upper case alphabet
ABCDEFGHIJKLMNOPQRSTUVWXYZ

special characters.

= equal sign
' close quote or apostrophe *act to count*
+ plus sign
. period
) close parenthesis
: colon
- minus sign
\$ dollar sign
* asterisk
/ slash
, comma
(open parenthesis
| vertical bar ~~or up arrow~~
] close square bracket
^ ~~left slash or circumflex~~
; semicolon
number sign
~ ~~not sign or hooked overbar~~
@ commercial at sign
% percent sign
! exclamation point
& ampersand
~ tilde
" double quote
_ underbar
< less than sign
[open square bracket
> greater than sign
? question mark
' open quote
{ open brace
} close brace

r rx otest with ball 015 nostop

W 1504.3

Load paper, hit return

Output test of all CTSS graphics.

lower case alphabet

abcdefghijklmnopqrstuvwxy

numerals

1234567890

upper case alphabet

ABCDEFGHIJKLMNOPQRSTUVWXYZ

special characters.

= equal sign

' close quote or apostrophe

+ plus sign

. period

) close parenthesis

: colon

\$ dollar sign

* asterisk

/ slash

, comma

(open parenthesis

vertical bar or up arrow

] close square bracket

left slash or circumflex

; semicolon

number sign

not sign or hooked overbar

@ commercial at sign

% percent sign

⊙ exclamation point

& ampersand

tilde

" double quote

_ underbar

less than sign

[open square bracket

greater than sign

? question mark

open quote

open brace

close brace

015 ball

q3d is standard (Ang 12)

=!;:%!"*()_+
[@#&@*?)Z°J

1234567890-&
123576840z1j

QWERTYUIOPç
OK:SULEYIAT

qwertyuiop@
ok;suleyiat

ASDFGHJKLI±
GNPQ,2M.VW(

asdfghjkl\$#
gnpq,/m.vw9

ZXCVBNM,.?
HCFD+R"B_X

zxcvbnm,./
hcfD=r'b-x

Output test of all CTSS graphics.

lower case alphabet
abcdefghijklmnopqrstuvwxyz

numerals
1234567890

upper case alphabet
ABCDEFGHIJKLMNOPQRSTUVWXYZ

special characters.

= equals
' acute accent (apostrophe)
+ plus sign
. period
) close parenthesis
: colon
- minus sign
\$ dollar sign
* asterisk
/ slant
, comma
(open parenthesis
vertical line
close square bracket
left slant
; semicolon
number sign
overline (not sign)
@ commercial at sign
% percent sign
exclamation point
& ampersand
circumflex
" double quote
_ underline
- less than sign
open square bracket
greater than sign
? question mark
open quote
open brace
close brace

Prestige Elite 72
IBM Ball 033

Output test of all CTSS graphics.

lower case alphabet
abcdefghijklmnopqrstuvwxyz

numerals
1234567890

upper case alphabet
ABCDEFGHIJKLMNOPQRSTUVWXYZ

special characters.

= equals
' acute accent (apostrophe)
+ plus sign
. period
) close parenthesis
: colon
- minus sign
\$ dollar sign
* asterisk
/ slant
, comma
(open parenthesis
vertical line
close square bracket
left slant
; semicolon
number sign
overline (not sign)
@ commercial at sign
% percent sign
exclamation point
& ampersand
circumflex
" double quote
_ underline
- less than sign
open square bracket
greater than sign
? question mark
open quote
open brace
close brace

Prestige Elite 72
IBM Ball 033

Output test of all CTSS graphics.

lower case alphabet
abcdefghijklmnopqrstuvwxyz

numerals
1234567890

upper case alphabet
ABCDEFGHIJKLMNOPQRSTUVWXYZ

special characters.
= equals
' acute accent (apostrophe)
+ plus sign
. period
) close parenthesis
: colon
- minus sign
\$ dollar sign
* asterisk
/ slant
, comma
(open parenthesis
vertical line
close square bracket
left slant
; semicolon
number sign
overline (not sign)
@ commercial at sign
% percent sign
exclamation point
& ampersand
circumflex
" double quote
_ underline
- less than sign
open square bracket
greater than sign
? question mark
open quote
open brace
close brace

Prestige Elite 72
IBM Ball 033

Output test of all CTSS graphics.

lower case alphabet
abcdefghijklmnopqrstuvwxy

numerals
1234567890

upper case alphabet
ABCDEFGHIJKLMNPOQRSTUVWXYZ

special characters.

= equals
' acute accent (apostrophe)
+ plus sign
. period
) close parenthesis
: colon
- minus sign
\$ dollar sign
* asterisk
/ slant
, comma
(open parenthesis
| vertical line
] close square bracket
\ left slant
; semicolon
number sign
~ overline (not sign)
@ commercial at sign
% percent sign
! exclamation point
& ampersand
^ circumflex
" double quote
_ underline
< less than sign
[open square bracket
> greater than sign
? question mark
" open quote
{ open brace
} close brace

IBM Ball 963

IBM Ball 963

Output test of all CTSS graphics.

lower case alphabet
abcdefghijklmnopqrstuvwxyz

numerals
1234567890

upper case alphabet
ABCDEFGHIJKLMNOPQRSTUVWXYZ

special characters.

= equals
' acute accent (apostrophe)
+ plus sign
. period
) close parenthesis
: colon
- minus sign
\$ dollar sign
* asterisk
/ slant
, comma
(open parenthesis
| vertical line
] close square bracket
^ left slant
; semicolon
number sign
~ overline (not sign)
@ commercial at sign
% percent sign
! exclamation point
& ampersand
^ circumflex
" double quote
_ underline
< less than sign
[open square bracket
> greater than sign
? question mark
" open quote
{ open brace
} close brace

962
Output test of all CTSS graphics.

lower case alphabet
abcdefghijklmnopqrstuvwxyz

numerals
1234567890

upper case alphabet
ABCDEFGHIJKLMNOPQRSTUVWXYZ

special characters.

= equals
' acute accent (apostrophe)
+ plus sign
. period
) close parenthesis
: colon
- minus sign
\$ dollar sign
* asterisk
/ slant
, comma
(open parenthesis
| vertical line
] close square bracket
\ left slant
; semicolon
number sign
~ overline (not sign)
@ commercial at sign
% percent sign
! exclamation point
& ampersand
^ circumflex
" double quote
_ underline
< less than sign
[open square bracket
> greater than sign
? question mark
" open quote
{ open brace
} close brace

Item No. 47-9

Type styles for the IBM "Selectric" Electric Typewriter

The following applications and type style groupings represent a suggested matching of type to job. Many of the type styles are suitable for other applications, and allow a wide choice based on personal preference. Your IBM Representative will be glad to advise you concerning your specific requirements.

10 Pitch Type Styles Prepared on a 10 Pitch IBM "Selectric" Typewriter

Suggested for
Correspondence,
General Typing,
and Spirit
Duplicating
(*Recommended
for Typing
Stencils).

Code 005
Letter Gothic

IBM LETTER GOTHIC Type, similar to the Artisan type styles for the IBM Model C Typewriter, is recommended for correspondence and reports.

ABCDEFGHIJKLMNOPQRSTUVWXYZ []@#\$\$%&*()
abcdefghijklmnopqrstuvwxyz -_+=!°"'/?:;,.
1234567890

Code 008*
Pica 72

IBM PICA 72 Type is similar to the Pica type styles offered with the IBM Model C Typewriter. It is well suited for a variety of typing jobs.

ABCDEFGHIJKLMNOPQRSTUVWXYZ []@#\$\$%&*()
abcdefghijklmnopqrstuvwxyz -_+=!°"'/?:;,.
1234567890

✓ Code 015
Courier 72

IBM COURIER 72 Type is a square-serif design in the Pica family of type styles. The open spaced characters make it highly legible.

ABCDEFGHIJKLMNOPQRSTUVWXYZ []@#\$\$%&*()
abcdefghijklmnopqrstuvwxyz -_+=!°"'/?:;,.
1234567890

Code 050*
Advocate

IBM ADVOCATE Type is a square-serif design in the Pica family of type styles. It is ideal for routine correspondence and reports.

ABCDEFGHIJKLMNOPQRSTUVWXYZ []@#\$\$%&*()
abcdefghijklmnopqrstuvwxyz -_+=!°"'/?:;,.
1234567890

Code 070
Delegate

IBM DELEGATE Type is a weighted type conveying the feeling of printed material. It is recommended for text copy and similar typing jobs.

ABCDEFGHIJKLMNOPQRSTUVWXYZ []@#\$\$%&*()
abcdefghijklmnopqrstuvwxyz -_+=!°"' :;/?;,.
1234567890

NOTE: The above type samples prepared on the carbon ribbon model. Because of inherent differences between printed and typewritten impressions, these type styles are not representative of typewritten material and should be used as a guide to type design only.

10 Pitch Type Styles Prepared on a 10 Pitch IBM "Selectric" Typewriter

Suggested for Special Typing Applications... (*Recommended for Typing Stencils).

Code 006
Manifold 72

SIMILAR TO IBM MANIFOLD 72 (CODE 010) THIS TYPE STYLE OFFERS PICA NUMERALS WHICH ARE REQUIRED FOR MAXIMUM CARBON LEGIBILITY.

ABCDEFGHIJKLMN0PQRSTUVWXYZ ±@#\$\$%&*(
1234567890 -_+=!°"'/?;:,.

Code 010
Manifold 72

IBM MANIFOLD 72 TYPE IS A SANS-SERIF TYPE STYLE DESIGNED FOR BILLING AND FORMS PREPARATION. IT PROVIDES A MAXIMUM NUMBER OF CLEAR CARBON COPIES.

ABCDEFGHIJKLMN0PQRSTUVWXYZ ±@#\$\$%&*(
1234567890 -_+=!°"'/?;:,.

Code 019
Manifold 72

SIMILAR TO IBM MANIFOLD 72 (CODE 010) THIS TYPE STYLE HAS A LINE THROUGH ZERO (Ø) ELIMINATING CONFUSION BETWEEN LETTER AND NUMBER GROUPINGS.

ABCDEFGHIJKLMN0PQRSTUVWXYZ ±@#\$\$%&*(
123456789Ø -_+=!°"'/?;:,.

Code 009
1428
Alphameric

IBM 1428 ALPHAMERIC TYPE PROVIDES MACHINE-READABLE, OPTICAL SCANNING COPY AS SIMPLY AS SNAPPING ON A 1428 ELEMENT.

ABCDEFGHIJKLMN0PQRSTUVWXYZ -=*#+/,.

Code 022
1403
Alphameric

IBM 1403 ALPHAMERIC TYPE PROVIDES MACHINE-READABLE, OPTICAL SCANNING COPY AS SIMPLY AS SNAPPING ON A 1403 ELEMENT.

ABCDEFGHIJKLMN0PQRSTUVWXYZ *@#\$\$%&½()
1234567890 -_-=□#"'/?;:,.

Code 023
12L2/12F2
Alphameric

IBM 12L2/12F2 ALPHAMERIC TYPE PROVIDES MACHINE-READABLE, OPTICAL SCANNING COPY AS SIMPLY AS SNAPPING ON A 12L2/12F2 ELEMENT.

Γ Δ ∇ ∏]24567-3 7 1 *@#() ¶ & - 0 \$
ABCDEFGHIJKLMN0PQRSTUVWXYZ ' " = + Δ ∇ ;] / ? ∓ = . .
1234567890

Code 017*
Pica 72

Similar to IBM PICA 72 (Code 008) this type style offers paragraph (¶) and section (§) characters often needed for legal documents.

ABCDEFGHIJKLMN0PQRSTUVWXYZ [] ¶ # \$ % & * ()
abcdefghijklmnopqrstuvwxyz -_+=!°"'/?;:,.

NOTE: The above type samples prepared on the carbon ribbon model. Because of inherent differences between printed and typewritten impressions, these type styles are not representative of typewritten material and should be used as a guide to type design only.

IBM Model C Typewriter

IBM "Executive" Typewriter

IBM "Selectric" Typewriter

12 Pitch Type Styles Prepared on a 12 Pitch IBM "Selectric" Typewriter

Suggested for
Correspondence,
General Typing,
and Spirit
Duplicating
(*Recommended
for Typing
Stencils).

Code 001* IBM SCRIBE Type is a modern square-serif design in the
Scribe Elite family of type styles. It is ideally suited for
the preparation of routine correspondence and reports.

ABCDEFGHIJKLMNOPQRSTUVWXYZ []@#%&*()
abcdefghijklmnopqrstuvwxyz -_+=!''/?;:,.
1234567890

Code 007* IBM ELITE 72 Type is similar to the Elite type styles
Elite 72 offered with the IBM Model C Typewriter. It is well
suited for a wide range of typing applications.

ABCDEFGHIJKLMNOPQRSTUVWXYZ []@#%&*()
abcdefghijklmnopqrstuvwxyz -_+=!''/?;:,.
1234567890

Code 012 IBM PRESTIGE ELITE 72 Type is a weighted type similar
Prestige Elite 72 to the Prestige Elite styles offered with the IBM Model
C Typewriter. It meets a range of typing applications.

ABCDEFGHIJKLMNOPQRSTUVWXYZ []@#%&*()
abcdefghijklmnopqrstuvwxyz -_+=!''/?;:,.
1234567890

Code 020 IBM DUAL GOTHIC 72 Type is a sans-serif type similar
Dual Gothic 72 to Dual Basic Gothic type style offered with the IBM
Model C Typewriter. Its crisp appearance adds to the
legibility of all copy.

ABCDEFGHIJKLMNOPQRSTUVWXYZ []@#%&*()
abcdefghijklmnopqrstuvwxyz -_+=!''/?;:,.
1234567890

Code 030 IBM ADJUTANT Type is a weighted type that conveys the
Adjutant feeling of printed material. It is recommended for
the preparation of text copy and similar applications.

ABCDEFGHIJKLMNOPQRSTUVWXYZ []@#%&*()
abcdefghijklmnopqrstuvwxyz -_+=!''/?;:,.
1234567890

NOTE: The above type samples prepared on the carbon ribbon model.
Because of inherent differences between printed and typewritten impressions, these type styles
are not representative of typewritten material and should be used as a guide to type design only.

12 Pitch Type Styles Prepared on a 12 Pitch IBM "Selectric" Typewriter

Suggested for
Special Typing
Applications . . .

Code 004
Symbol 12

The Following Symbols are Available on the IBM Symbol 12 Typing Element:

123456789 √|{}±∑∫∫∫ √δεθτυξιορπ
 ΓΔ←Θ→ΤΕ↑↓ℓΠ ασφ(λη)κω**÷ ∇ΣΦ<ΛΠ>§Ω^•
 ζχψ×βνμˆ~λ ≈≡Ψαωλδ`†‡

Code 014
Light
Italic

IBM LIGHT ITALIC Type is a "fine-line" style that may be used alone or in combination with Pica or Elite type styles to add impact and emphasis to many typing jobs.

ABCDEFGHIJKLMNPOQRSTUVWXYZ ±@#\$\$%&*()
 abcdefghijklmnopqrstuvwxyz -_+=!''"/?:;,.
 1234567890

Code 090
Script

IBM SCRIPT Type is a special-purpose type style that simulates handwriting. It provides a pleasing change of pace and emphasis for a wide range of typing jobs.

ABCDEFGHIJKLMNPOQRSTUVWXYZ ±@#\$\$%&*()
 abcdefghijklmnopqrstuvwxyz -_+=!''"/?:;,.
 1234567890

NOTE: The above type samples prepared on the carbon ribbon model. Because of inherent differences between printed and typewritten impressions, these type styles are not representative of typewritten material and should be used as a guide to type design only.

IBM Model C Typewriter

IBM "Executive" Typewriter

Attachments and Features

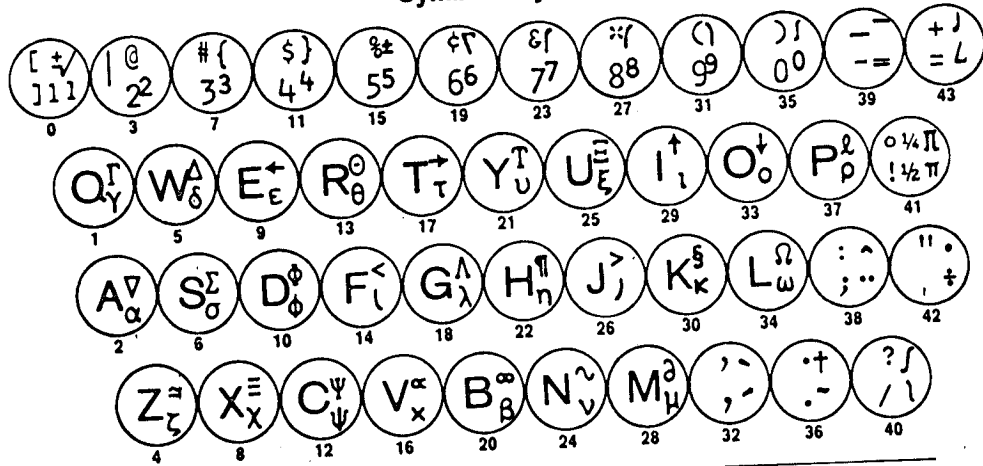
IBM Magnetic Tape
"Selectric" Typewriter

IBM Symbol 12 Element Layout

The IBM Symbol 12 element contains 88 symbol characters including mathematical, legal, chemical and language accents. Numerous other symbols can be constructed by combining two or more characters. With the addition of a standard typing element, the complete Greek alphabet is also available in upper and lower case.

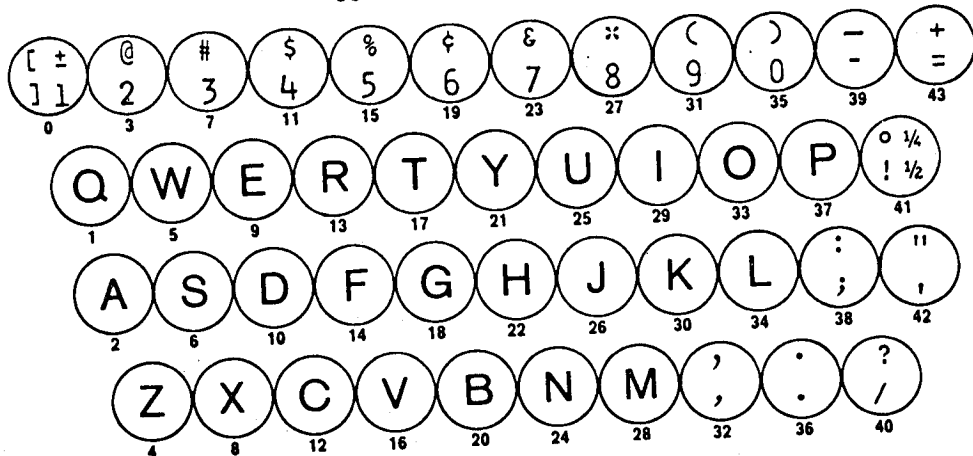
IBM Symbol 12 stick-on tabs placed on the front of required keys relate symbol character position to any IBM "Selectric" typewriter keyboard.

Symbol Layout

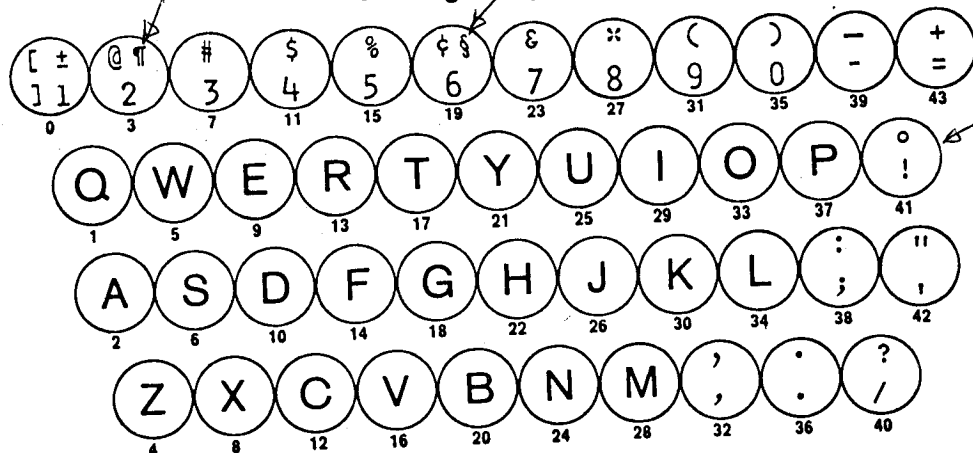


Keyboard arrangements for IBM "Selectric" Typewriter

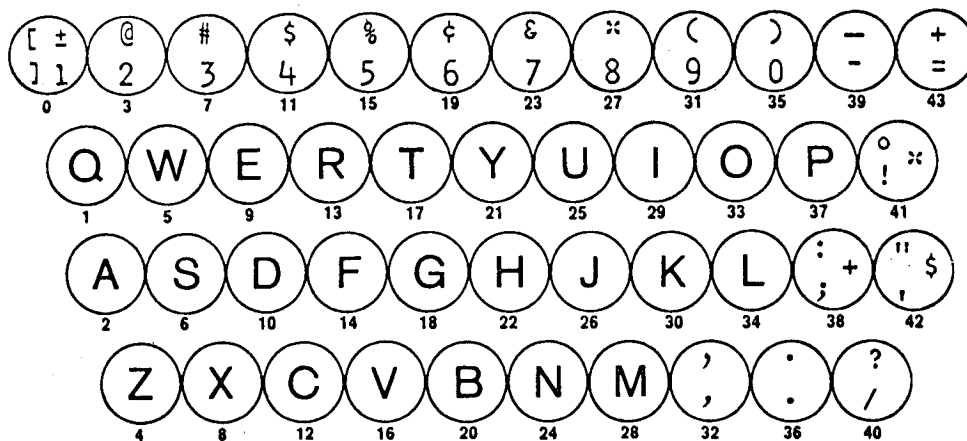
001 Standard Keyboard:



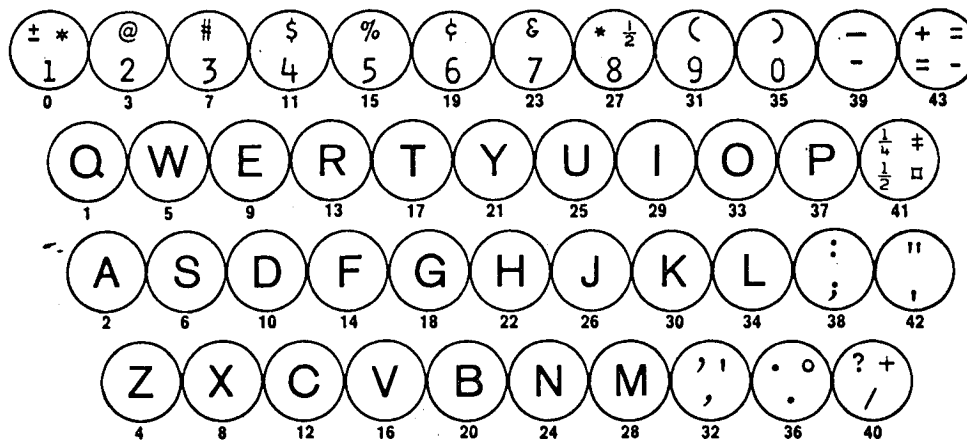
017 Legal Keyboard:



009 1428 Alphameric Optical Scanning Keyboard:

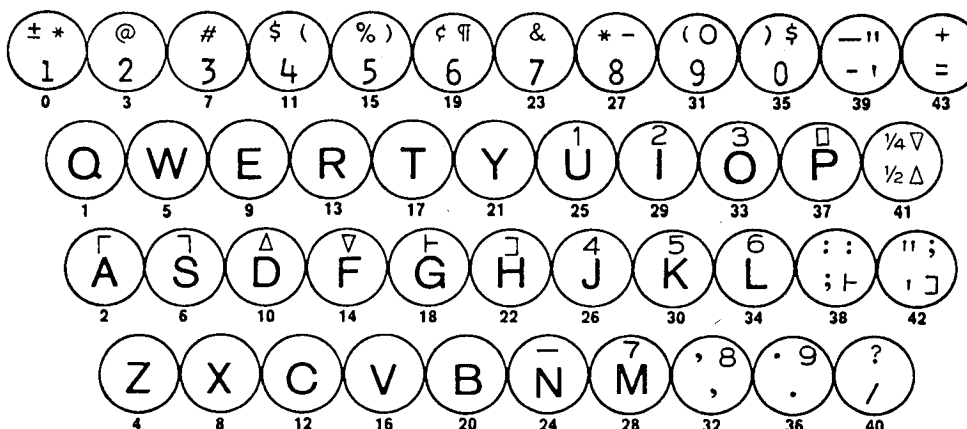


022 1403 Alphameric Optical Scanning Keyboard:*



There are both standard correspondence symbols and "1403" symbols in positions 0, 27, 36, 40, 41 & 43.

023 12L2/12F2 Keyboard:*



For optical scanning purposes. The keyboard layout depicts both standard correspondence symbols and the "Selfchek"*** symbols. The "Selfchek" symbols are in positions 2, 6, 10, 14, 18, 22, 24, 37, 38, 41, and 42.

*For best results in the optical scanning process, the Carbon Ribbon Model is recommended when either the 022 1403 alphameric or the 023 12L2/12F2 Keyboard is ordered.

***Selfchek" is a trademark of the Farrington Manufacturing Company.

Unless otherwise specified, all IBM "Selectric" typewriter models will be shipped with the "001" keyboard arrangement. Typing elements will have the characters indicated below on the keyboard positions "0" and "41".

IBM "Selectric" Typewriter Standard Keyboard:

TYPE CODE	TYPE FACE	PITCH	STANDARD KEYBOARD		KEYBOARD PART NO.	
			POSITION "0"	POSITION "41"		
030	Adjutant	12	Brackets	degree over !	001	1167030
031	Adjutant	12	± over 1	¼ over ½	001	1167031
050	Advocate	10	Brackets	degree over !	001	1167050
036	Advocate	10	± over 1	¼ over ½	001	1167036
003	Advocate (Puerto Rican)	10	Not applicable	Not applicable	002	1167003
015	Courier 72	10	Brackets	degree over !	001	1167015
029	Courier 72	10	± over 1	¼ over ½	001	1167029
040	Courier 72 (Puerto Rican)	10	Not applicable	Not applicable	002	1167040
070	Delegate	10	Brackets	degree over !	001	1167070
035	Delegate	10	± over 1	¼ over ½	001	1167035
002	Delegate (Puerto Rican)	10	Not applicable	Not applicable	002	1167002
020	Dual Gothic 72	12	Brackets	degree over !	001	1167020
021	Dual Gothic 72	12	± over 1	¼ over ½	001	1167021
007	Elite 72	12	Brackets	degree over !	001	1167007
026	Elite 72	12	± over 1	¼ over ½	001	1167026
005	Letter Gothic	10	Brackets	degree over !	001	1167005
039	Letter Gothic	10	± over 1	¼ over ½	001	1167039
014	Light Italic	12	± over 1	degree over !	001	1167014
032	Light Italic	12	± over 1	¼ over ½	001	1167032
006	Manifold 72 (Pica Numerals)	10	± over 1	degree over !	001	1167006
010	Manifold 72	10	± over 1	degree over !	001	1167010
028	Manifold 72	10	± over 1	¼ over ½	001	1167028
019	Manifold 72 (Cancelled Zero)	10	± over 1	degree over !	001	1167019
008	Pica 72	10	Brackets	degree over !	001	1167008
027	Pica 72	10	± over 1	¼ over ½	001	1167027
017	Pica 72 (Legal)	10	Brackets	degree over !	017	1167017
012	Prestige Elite 72	12	Brackets	degree over !	001	1167012
033	Prestige Elite 72	12	± over 1	¼ over ½	001	1167033
041	Prestige Elite 72 (Puerto Rican)	12	Not applicable	Not applicable	002	1167041
001	Scribe	12	Brackets	degree over !	001	1167001
025	Scribe	12	± over 1	¼ over ½	001	1167025
018	Scribe (Puerto Rican)	12	Not applicable	Not applicable	002	1167018
090	Script	12	± over 1	degree over !	001	1167090
034	Script	12	± over 1	¼ over ½	001	1167034
042	Script (Puerto Rican)	12	Not applicable	Not applicable	002	1167042
004	Symbol 12	12	Not applicable	Not applicable	004	1167004
009	1428 Alphameric	10	1 over 1	degree over !	009	1167009
016	1428 Alphameric Key Punch Simulator	10	"Pillow" over 1	degree over !	016	1167016
022	1403 Alphameric	10	See 022 1403 Alphameric Keyboard, page 13.		023	1167022
023	12L2/12F2	10	See 023 12L2/12F2 Keyboard, page 13.		023	1167023

ET Type Styles IBM "Selectric" Typewriter

Type Code 001*
12 pitch
Part No. 1167001

IBM SCRIBE Type is a modern square-serif design in the Elite family of type styles. It is ideally suited for the preparation of routine correspondence and reports.

ABCDEFGHIJKLMNOPQRSTUVWXYZ []@#\$\$%&*()
abcdefghijklmnopqrstuvwxyz -_ =+!°'''/?:;,.
1234567890

Type Code 004
12 pitch
Part No. 1167004

The Following Symbols are Available on the IBM Symbol 12 Typing Element:

123456789	√ { }±∇∏∏∏∏	γδεθτυξιορπ
ΓΔ←→ΤΕ↑↓∏	ασφ(λη)κω÷	∇ΣΦ<Λ∏>§Ω^.
ζχψ×βνμˆ~ι	≈≡Ψαωλθ`+f	

Type Code 005*
10 pitch
Part No. 1167005

IBM LETTER GOTHIC Type, similar to the Artisan type styles for the IBM Model C Typewriter, is recommended for correspondence and reports.

ABCDEFGHIJKLMNOPQRSTUVWXYZ []@#\$\$%&*()
abcdefghijklmnopqrstuvwxyz -_ =+!°'''/?:;,.
1234567890

Type Code 006
10 pitch
Part No. 1167006

SIMILAR TO IBM MANIFOLD 72 (CODE 10), THIS TYPE STYLE OFFERS PICA NUMERALS WHICH ARE REQUIRED FOR MAXIMUM CARBON LEGIBILITY.

ABCDEFGHIJKLMNOPQRSTUVWXYZ ±@#\$\$%&*()
1234567890 -_ =+°!'''/?:;,.

Type Code 007*
12 pitch
Part No. 1167007

IBM ELITE 72 Type is similar to the Elite type styles offered with the IBM Model C Typewriter. It is well suited for a wide range of typing applications.

ABCDEFGHIJKLMNOPQRSTUVWXYZ []@#\$\$%&*()
abcdefghijklmnopqrstuvwxyz -_ =+!°'''/?:;,.
1234567890

*Also available with a ± over 1 in position "0" and a ½ over ¼ in position "41". Refer to Keyboards Section, Page 10 for Type Code and Part No.

Note: Because of inherent differences between printed and typewritten impressions, these type styles are not representative of typewritten material and should be used as a guide to type design only.

ET Type Styles IBM "Selectric" Typewriter

✓ Type Code 008*
10 pitch
Part No. 1167008

75%
IBM PICA 72 Type is similar to the Pica type styles offered with the IBM Model C Typewriter. It is well suited for a variety of typing jobs.

ABCDEFGHIJKLMNOPQRSTUVWXYZ []@#%&*()
abcdefghijklmnopqrstuvwxyz -_+=!°"'/?;:;,.
1234567890

X Type Code 009
10 pitch
Part No. 1167009

IBM 1428 ALPHAMERIC TYPE PROVIDES MACHINE-READABLE, OPTICAL SCANNING COPY AS SIMPLY AS SNAPPING ON A 1428 ELEMENT.

ABCDEFGHIJKLMNOPQRSTUVWXYZ --*#+/,,
1234567890

X Type Code 010*
10 pitch
Part No. 1167010

IBM MANIFOLD 72 TYPE IS A SANS-SERIF TYPE STYLE DESIGNED FOR BILLING AND FORMS PREPARATION. IT PROVIDES A MAXIMUM NUMBER OF CLEAR CARBON COPIES.

ABCDEFGHIJKLMNOPQRSTUVWXYZ ±@#%&*()
1234567890 -_+=!°"'/?;:;,.
X

X Type Code 012*
12 pitch
Part No. 1167012

IBM PRESTIGE ELITE 72 Type is a weighted type similar to the Prestige Elite styles offered with the IBM Model C Typewriter. It meets a range of typing applications.

ABCDEFGHIJKLMNOPQRSTUVWXYZ []@#%&*()
abcdefghijklmnopqrstuvwxyz -_+=!°"'/?;:;,.
1234567890

X Type Code 014*
12 pitch
Part No. 1167014

IBM LIGHT ITALIC Type is a "fine-line" style that may be used alone or in combination with Pica or Elite type styles to add impact and emphasis to many typing jobs.

ABCDEFGHIJKLMNOPQRSTUVWXYZ ±@#%&*()
abcdefghijklmnopqrstuvwxyz -_+=!°"'/?;:;,.
1234567890

*Also available with a ± over 1 in position "0" and a ½ over ¼ in position "41".
Refer to Keyboards Section, Page 10 for Type Code and Part No.

Note: Because of inherent differences between printed and typewritten impressions, these type styles are not representative of typewritten material and should be used as a guide to type design only.

ET Type Styles IBM "Selectric" Typewriter

Type Code 023
10 pitch
Part No. 1167023

THIS IS A SAMPLE OF THE IBM 12L2/12F2 OPTICAL SCANNING TYPE. MACHINE READABLE COPY CAN BE PREPARED AS EASILY AS SNAPPING ON THIS ELEMENT.

Γ Δ ∇ Ɔ 24567-30 7 1 *@#() ¶ & - 05
 ABCDEFGHIJKLMNOPQRSTUVWXYZ "'=+Δ∇;] / 7 Ɔ : , .
 1234567890

Type Code 030*
12 pitch
Part No. 1167030

IBM ADJUTANT Type is a weighted type that conveys the feeling of printed material. It is recommended for the preparation of text copy and similar applications.

ABCDEFGHIJKLMNPOQRSTUVWXYZ [] @ # \$ % & * ()
 abcdefghijklmnopqrstuvwxyz - _ = + ! ° ' " ' / ? ; : , .
 1234567890

Type Code 050*
10 pitch
Part No. 1167050

IBM ADVOCATE Type is a square-serif design in the Pica family of type styles. It is ideal for routine correspondence and reports.

ABCDEFGHIJKLMNPOQRSTUVWXYZ [] @ # \$ % & * ()
 abcdefghijklmnopqrstuvwxyz - _ = + ! ° ' " ' / ? ; : , .
 1234567890

Type Code 070*
10 pitch
Part No. 1167070

IBM DELEGATE Type is a weighted type conveying the feeling of printed material. It is recommended for text copy and similar typing jobs.

ABCDEFGHIJKLMNPOQRSTUVWXYZ [] @ # \$ % & * ()
 abcdefghijklmnopqrstuvwxyz - _ = + ! ° ' " ' / ? ; : , .
 1234567890

Type Code 090*
12 pitch
Part No. 1167090

IBM SCRIPT Type is a special-purpose type style that simulates handwriting. It provides a pleasing change of pace and emphasis for a wide range of typing jobs.

ABCDEFGHIJKLMNPOQRSTUVWXYZ ± @ # \$ % & * ()
 abcdefghijklmnopqrstuvwxyz - _ = + ! ° ' " ' / ? ; : , .
 1234567890

*Also available with a ± over 1 in position "0" and a ½ over ¼ in position "41".
 Refer to Keyboards Section, Page 10 for Type Code and Part No.

Note: Because of inherent differences between printed and typewritten impressions, these type styles are not representative of typewritten material and should be used as a guide to type design only.

ET Type Styles

Type Styles for IBM "Selectric" Typewriters

Type code 05
10 pitch
Part No. 1167005

X

This is a sample of the IBM LETTER GOTHIC type style developed for the IBM "Selectric" Typewriter. This san-serif type is similar to the Artisan #12 type style offered with the IBM Model C Typewriter. It is recommended for general correspondence and statistical reports.

X

ABCDEFGHIJKLMNOPQRSTUVWXYZ
abcdefghijklmnopqrstuvwxyz
1234567890
[]@#%&*()_+°":?.,=!';/.,
[1]2@3#4\$5%6¢7&8*9(0)2+3°4=

Type code 20
12 pitch
Part No. 1167020

X

This is a sample of the IBM DUAL GOTHIC 72 type style developed for the IBM "Selectric" Typewriter. This san-serif type is similar to the Dual Basic Gothic type style offered with the IBM Model C Typewriter. Its crisp, sharp appearance adds to the legibility of all typewritten copy.

X

ABCDEFGHIJKLMNOPQRSTUVWXYZ
abcdefghijklmnopqrstuvwxyz
1234567890
[]@#%&*()_+°":?.,=!';/.,
[1]2@3#4\$5%6¢7&8*9(0)2+3°4=

Type code 22
10 pitch
Part No. 1167022

X

THIS IS A SAMPLE OF IBM 1403 OPTICAL SCANNING TYPE. NOW, MACHINE READABLE COPY CAN BE PREPARED ON THE IBM "SELECTRIC" TYPEWRITER AS EASILY AS SNAPPING ON THIS INTERCHANGEABLE TYPING ELEMENT.

X

ABCDEFGHIJKLMNOPQRSTUVWXYZ
1234567890--□';/.,
*@#%&½()_=#":+°'

Note: Because of inherent differences between printed and typewritten impressions, these type styles are not representative of typewritten material and should be used as a guide to type design only.

ET Type Styles

Type Styles for IBM "Selectric" Typewriters

Type code 23
10 pitch
Part No. 1167023

THIS IS A SAMPLE OF THE IBM 12L2/12F2 OPTICAL SCANNING TYPE. MACHINE READABLE COPY CAN BE PREPARED ON THE IBM "SELECTRIC" TYPEWRITER AS EASILY AS SNAPPING ON THIS INTERCHANGEABLE TYPING ELEMENT.

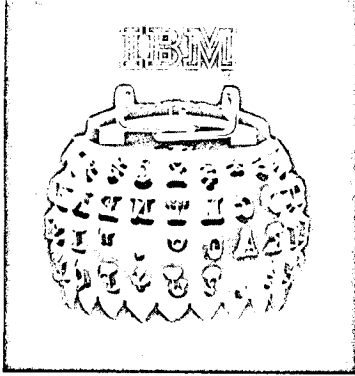
ABCDEFGHIJKLMNOPQRSTUVWXYZ

Γ Δ ∇ ∫ ∫ 2 4 5 6 7 - 3 0 7 1

1 2 3 4 5 6 7 8 9 0 * @ # () ¶ & - 0 \$

' = Δ ∫ ∫ . . / " + ∇ : ; 8 9 ?

Note: Because of inherent differences between printed and typewritten impressions, these type styles are not representative of typewritten material and should be used as a guide to type design only.



The IBM "Selectric"

Typewriter

10 Pitch type styles

Production Pica
Code 08

With the IBM "Selectric" Typewriter, you can choose the style of type best for each production typing application.
1234567890 []@#\$\$%&*() _-+=°!"':;?/,.

Manifold
Code 10

WITH THE IBM "SELECTRIC" TYPEWRITER, YOU CAN CHOOSE THE STYLE OF TYPE BEST FOR EACH PRODUCTION TYPING APPLICATION.
1234567890 ±@#\$\$%&*() _-+=°!"':;?/,.

Advocate
Code 50

With the IBM "Selectric" Typewriter, you can choose the style of type best for each production typing application.
1234567890 []@#\$\$%&*() _-+=°!"':;?/,.

Delegate
Code 70

With the IBM "Selectric" Typewriter, you can choose the style of type best for each production typing application.
1234567890 []@#\$\$%&*() _-+=°!"':;?/,.

NOTE: Because of inherent differences between printed and typewritten impressions, these type styles are not representative of typewritten material and should be used as a guide to type design only.

**12 Pitch type styles prepared on a
10 Pitch IBM "Selectric" Typewriter**

Scribe
Code 01

With the IBM "Selectric" Typewriter, you
can choose the style of type best for
each production typing application.
1234567890 []@#\$\$%&*()_ - += ° ! " ' : ; ? / , .

Production Elite
Code 07

With the IBM "Selectric" Typewriter, you
can choose the style of type best for
each production typing application.
1234567890 []@#\$\$%&*()_ - += ° ! " ' : ; ? / , .

Adjutant
Code 30

With the IBM "Selectric" Typewriter, you
can choose the style of type best for
each production typing application.
1234567890 []@#\$\$%&*()_ - += ° ! " ' : ; ? / , .

Script
Code 90

*With the IBM "Selectric" Typewriter, you
can choose the style of type best for
each production typing application.
1234567890 ±@#\$\$%&*()_ - += ° ! " ' : ; ? / , .*

NOTE: Because of inherent differences between printed and typewritten impressions, these type styles are not representative of typewritten material and should be used as a guide to type design only.



The IBM "Selectric"

Typewriter

12 Pitch type styles

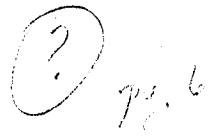
Scribe
Code 01

With the IBM "Selectric" Typewriter, you can choose the style of type best for each production typing application.
1234567890 []@#\$\$%&*() _-+=°!"':;?/,.



Universal Symbol
Code 04

1234567890 $\sqrt{|\{ \} \pm \Gamma / / \{ \} /}$ $\gamma \delta \epsilon \theta \tau \upsilon \xi \iota \omicron \pi$
 $\Gamma \Delta + \Theta \rightarrow \Upsilon E + + 2 \Pi$ $\alpha \sigma \phi (\lambda \eta \kappa \omega \cdot +$ $\nabla \Sigma \phi < \Lambda \eta > \xi \Omega \wedge \cdot$
 $\zeta \chi \psi \times \beta \nu \mu \sim _ 1$ $\approx \equiv \Psi \alpha \omega \nu \partial \sim + /$



Production Elite
Code 07

With the IBM "Selectric" Typewriter, you can choose the style of type best for each production typing application.
1234567890 []@#\$\$%&*() _-+=°!"':;?/,.



Adjutant
Code 30

With the IBM "Selectric" Typewriter, you can choose the style of type best for each production typing application.
1234567890 []@#\$\$%&*() _-+=°!"':;?/,.



Script
Code 90

With the IBM "Selectric" Typewriter, you can choose the style of type best for each production typing application.
1234567890 $\pm @ \# \$ \% \& * () _ - + = ^ \circ ! " ' : ; ? / , .$



Because of inherent differences between printed and typewritten impressions, these type styles are not representative of typewritten material and should be used as a guide to type design only.

10 Pitch type styles prepared on a 12 Pitch IBM "Selectric" Typewriter

Production Pica
Code 08

With the IBM "Selectric" Typewriter, you
can choose the style of type best for
each production typing application.
1234567890 []@#\$\$%&*()_+ = ° ! " ' : ; ? / , .

Manifold
Code 10

WITH THE IBM "SELECTRIC" TYPEWRITER, YOU
CAN CHOOSE THE STYLE OF TYPE BEST FOR
EACH PRODUCTION TYPING APPLICATION.
1234567890 ±@#\$\$%&*()_+ = ° ! " ' : ; ? / , .

Advocate
Code 50

With the IBM "Selectric" Typewriter, you
can choose the style of type best for
each production typing application.
1234567890 []@#\$\$%&*()_+ = ° ! " ' : ; ? / , .

Delegate
Code 70

With the IBM "Selectric" Typewriter, you
can choose the style of type best for
each production typing application.
1234567890 []@#\$\$%&*()_+ = ° ! " ' : ; ? / , .

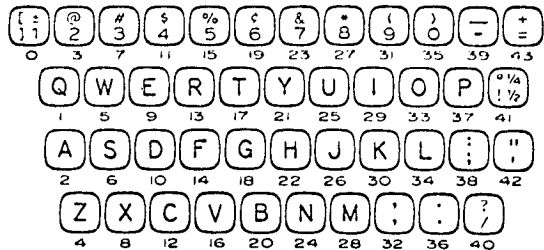
ET Keyboards

"Selectric" ET

- * It is unnecessary to show keyboard code on Equipment Orders on IBM "Selectric" equipment; therefore, keyboard field should be coded "00". Keyboard arrangements supplied with the various type codes are indicated on the preceding page.
- ** Since there are further keyboard variances in this type code, keyboard arrangements are shown on following pages.

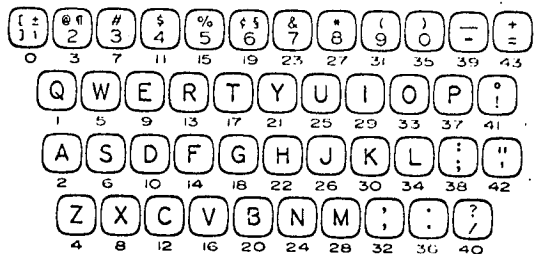
01 Standard Keyboard

Standard arrangement - no extra charge.
 Available in the following type codes: 01, 05, 06, 07, 08, 09, 10, 12, 14, 15, 19, 20, 21, 25, 26, 27, 28, 29, 30, 31, 32, 33, 34, 35, 36, 39, 50, 70, 90
 Characters supplied in position "0" are indicated on the preceding page.



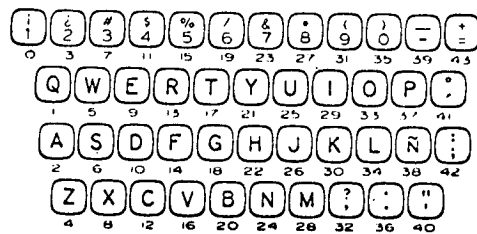
17 Legal

Standard arrangement - no extra charge.
 Available in the following type code: 17
 Where other than standard characters exist on the element, multiple character keybuttons are shown (positions 3 and 19). The characters shown at the right are supplied on this element — standard arrangement is shown at the left for typists' information should a standard element be used.



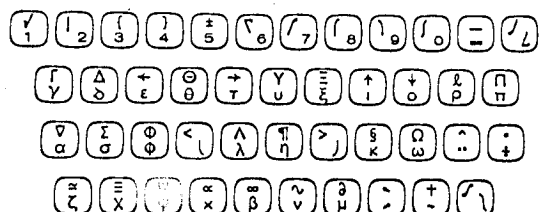
02 Puerto Rican Correspondence

Standard arrangement - no extra charge.
 Available in the following Puerto Rican type codes: 02, 03, 18
 Standard domestic print elements can be used on Puerto Rican machines since only eight keyboard positions differ. Differences exist in positions 0, 3, 19, 32, 38, 40, 41 and 42. A keyboard reference chart can be improvised if necessary due to the familiarity with the standard keyboard. Position 41 furnished as a "dead key" unless otherwise specified.



Symbol 12

The keyboard arrangement shown is merely to show what characters are on the element — the standard keyboard arrangement will be supplied.



ET Keyboards

"Selectric" ET

09 1428 Alphameric

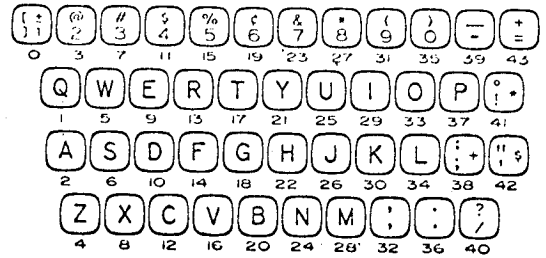
Standard arrangement - no extra charge.

Available in the following type code: 09

For optical scanning purpose, use only on 10 pitch.

Characters supplied with this type are duplicated in the upper case, e.g., position "0" will type "1" in upper and lower case.

Where other than standard characters exist on the element, multiple character keybuttons are shown (positions 38, 41 and 42). The characters shown at the right are supplied on this element - standard arrangement is shown at the left for typists' information should a standard element be used.



16 1428 Alphameric

Key Punch Simulator

Standard arrangement - no extra charge.

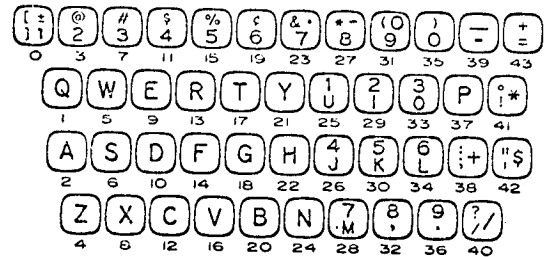
Available in the following type code: 16

For optical scanning purpose, use only on 10 pitch.

Lower case is identical to type code 09.

Valid upper case characters appear only in shaded keyboard positions and positions 38, 40, 41 and 42. All unshaded positions have "pillows" in upper case (a "pillow" is a vertical-rectangular-solid mark. It indicates that an invalid character has been typed).

Keyboard is available in Accent Gray only and shaded area keybuttons are Dark Gray.



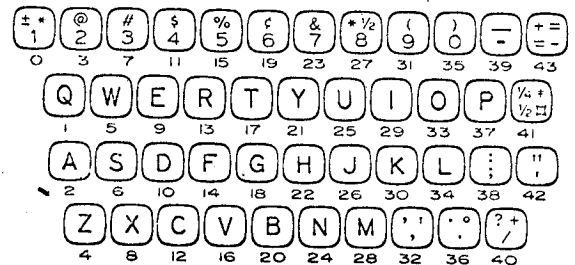
22 1403 ALPHAMERIC

Standard arrangement - no extra charge.

Available in the following type code - 22

For optical scanning purposes, use only on 10 pitch.

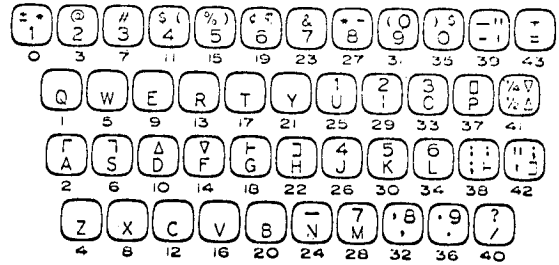
There are both standard correspondence symbols and "1403" symbols in positions 0, 27, 32, 36, 40, 41, and 43.



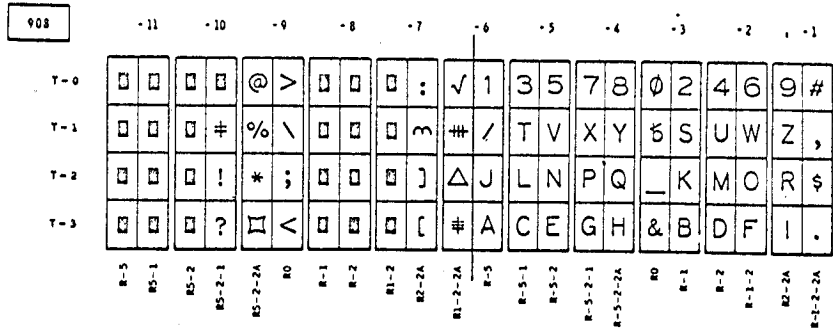
ET Keyboards

2312L2/12 F2

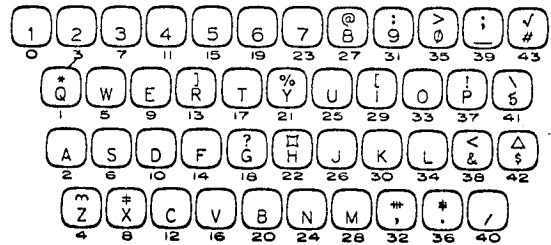
Standard arrangement - no extra charge
 Available in the following type codes - 23
 For optical scanning purposes, uses only 10 pitch.
 The keyboard layout depicts both standard correspondence symbols and the "Selfchek" symbols. The "Selfchek" symbols are in positions 2, 6, 10, 14, 18, 22, 24, 37, 38, 41, and 42.



Input/Output "Selectric" ET 08 "BCD" "Selectric" Type Element Layout



08 "BCD"



* "Selfchek" is a trademark of the Farrington Manufacturing Company.

>	:	%	"	*	1	11	%	:	!	#	1	3	5	7	8	0	2	4	6	9	11
? T	V	X	Y	A	S	U	W	Z	,	/	t	v	x	y	@	s	u	w	z	,	
J	L	N	P	Q	\	K	M	O	R	!	j	i	n	p	q	-	k	m	o	r	\$
A	C	E	G	H	<	B	D	F	I	.	a	c	e	g	h	&	b	d	f	i	.

UPSHIFT

DOWNSHIFT

- 1
- 2
- 3
- 4
- 5
- 6
- 7
- *8
- 9
- 0
- /
- 11

- Q
- E
- R
- T
- Y
- U
- I
- O
- P
- @

- A
- S
- D
- F
- G
- H
- J
- K
- L
- !\$
- #

- Z
- X
- C
- V
- B
- N
- M
- :
- ;
- ?/



DOMESTIC CORRESPONDENCE

TELETYPE DESIGN

L	#	&	*	\$	z	e	%	†)	(1	3	7	8	4	z	2	5	6	0	9
X	U	D	C	L	T	N	E	K	H	B	x	u	d	c	l	t	n	e	k	h	b
M	V	R	A	O	.	"	I	S	W	m	v	r	a	o	l	.	"	i	s	w	-
G	F	:	,	? J	+	P	Q	Y	-	g	f	;	/	=	p	q	y	-			

001

OPERATOR

number

- 1 1
- 2 2
- 3 3
- 4 4
- 5 5
- 6 6
- 7 7
- 8 *
- 9 9
- 0 0
- = =
- + =

options

- Q
- W
- E
- R
- T
- Y
- U
- I
- O
- P
- !

- A
- S
- D
- F
- G
- H
- J
- K
- L
- ;
- "
- !

- Z
- X
- C
- V
- B
- N
- M
- ;
- :
- ?

Standard Selectric (Domestic) Keyboard + Ball

8-2-63

502348

?	I	V	N	F)	V	Z	R	J	B	-	3	v	n	f	/	7	z	r	j	b
:	>	U	M	E	(#	Y	Q	I	A	.	2	u	m	e	*	6	y	q	i	a
[<	T	L	D	"	Δ	X	P	H	"	9	1	t	e	l	d	=	5	x	p	h
-]	S	K	C	\$	π	W	O	G	%	8	0	s	k	c	+	4	w	o	g	>

DOUBTSHEET

< 1 > 2 > 3 4 5 6 7 8 9 0 \$ +
 π # √ []

Q W E R T Y U I O P " '

A S D F G H J K L (*) /

Z X C V B N M % , ; : ? -

Q >	b	!	v	1	3	5	7	Q	2	4	6	9	#
% !	4	=	"	/	T	V	X	Y	#	S	U	W	Z
* 3	-)	Δ	J	L	N	P	Q	I	K	M	O	R
π <	ε	(E	v	A	C	E	G	H	?	B	D	F

TOPSTRTFT DOWNSTFT

1 2 3 4 5 6 7 8 9 0 #

Q W E R T Y U I O P ;

(S D F G H J K L ;

Z X C V B N M , /

*73X

9	>	b	:	√	-	1	3	5	7	8	0	2	4	6	9	#
	%	1		=	/	T	V	X	Y	*	S	U	W	Z	,	
	%	3	-)	Δ	J	L	N	P	Q	-	K	M	O	R	\$
	%	<	G	(≠	∨	A	C	E	G	H	∫	B	D	F	I

WISCONSIN DOORHURF

1 2 3 4 5 6 7 8 9 0 #
 ; @ √ 6 7 8 9 0 #
 \$ % & ' () * + , - . / : ;

" ' () * + , - . / : ;
 S W E R T Y U I O P
 = ^ 3 P
 -

(F < S D F G H J K L \$
 & %

Z ! x C V B N M , /
) * , .

SAURE

1137905

122#

1	3	5	7	8	0	2	4	6	9	*	1	3	5	7	8	0	2	4	6	9	D
/	T	V	X	Y	-	S	U	W	Z	非	T	3	4	2	7	N	0	3	6	1	8
J	L	N	P	Q	Θ	K	M	O	R	非	2	1	6	3	非	3	7	7	2	L	
A	C	E	G	H	\$	B	D	F	I	.	J	3	1	3	1	S	5	1	2	6	9

TELETYPE

- 1
- 2
- 3
- 4
- 5
- 6
- 7
- 8
- 9
- 0
- NAME
- DISP *

- Q
- W
- E
- R
- T
- Y
- U
- I
- O
- P
- A
- S
- D
- F
- G
- H
- J
- K
- L
- \$
- ERASE

- Z
- X
- C
- V
- B
- N
- M
- END
- CSS#
- ISS#

501125

12-18-61

ET

1137908

⊙	>	√	1	3	5	7	8	∅	2	4	6	9	#
#	%	m	#	/	T	V	X	Y	⊗	S	U	W	Z
		*	;	Δ	J	L	N	P	Q	-	K	M	O
	P	H	<	£	#	A	C	E	G	H	£	B	D
													F
													I
													.

UPST... COURSE...

1 2 3 4 5 6 7 8 9 0

* Q W E R T Y % L I O P

A S D F G H J K L ;

z x c v b n m , . /

502140

10/10/02

B	J	R	Z	\$	Q	F	N	V	<	:	B	J	R	Z	Z	Q	F	N	V	3	:
A	I	Q	Y	6	,	E	M	U	+	"	A	I	Q	Y	6	,	E	M	U	2	,
--	H	P	X	>	!	D	L	T	-	(--	H	P	X	5	,	D	L	T	1	9
Q	G	O	W	=	?	C	K	S)	*	Q	G	O	W	4	/	C	K	S	0	8

UPPER CASE LETTERS

1 2 3 4 5 6 7 8 9 10 11 12

1 2 3 4 5 6 7 8 9 10 11 12

Q W E R T Y U I O P

A S D F G H J K L ;

Z X C V B N M , ' ! ?



(SOME) AMERICAN

1137910

1	3	5	7	8	0	2	4	6	9	*	1	3	5	7	8	0	2	4	6	9	D
/	T	V	X	Y	-	S	U	W	Z	,	T	3	4	2	4	N	0	5	0	1	8
J	L	N	P	Q	X	K	M	O	R	#	2	4	6	8	0	5	3	7	7	2	L
A	C	E	G	H	<	B	D	F	I	.	3	7	3	1	5	5	1	2	6	9	

#731

TOP SECRET

AVAIL	FLIFD	GPAX	OL FAX	RMS	RCVD	TKTG	TL	PHONE	SEG	NAME	DISP
(1)	(2)	(3)	(4)	(5)	(6)	(7)	(8)	(9)	(0)	(-)	(X)

CHNG

Q W E R T Y U I O P

A S D F G H J K L

ERASE CHAR

#

NEW TECH	CSS #	IAS #
(,)	(.)	(/)



10/10/81

501425

>	=	<	u	f	@	(%	#)	8	#	7	3	6	2	9	5	1	4	0	
Y	,	X	T	W	S	Z	V	?	U	;	Y	,	x	t	w	s	z	v	/	u	*
Q	:	P	L	O	K	R	N	J	M	-	9	\$	P	I	O	K	R	N	J	M	-
H	.	G	C	F	B	I	E	A	D	!	h	.	g	c	f	b	i	e	a	d	&

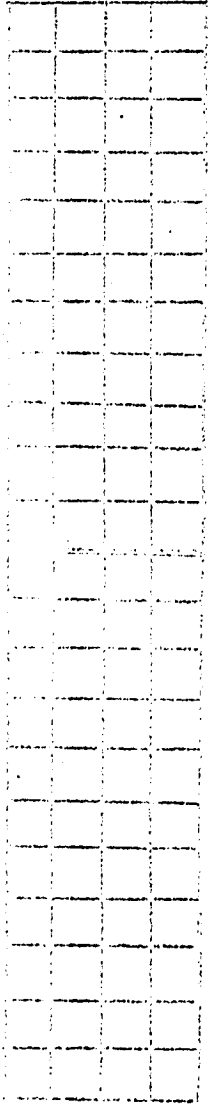
UNIDENTIFIED

i 2 3 4 5 6 7 8 9 0 * #
 @ 1 2 3 4 5 6 7 8 9 0 * #

Q W E R T Y U I O P =
 []

A S D F G H J K L ; \$
 []

Z X C V B N M , : ? /
 []



452

UPSHIFT

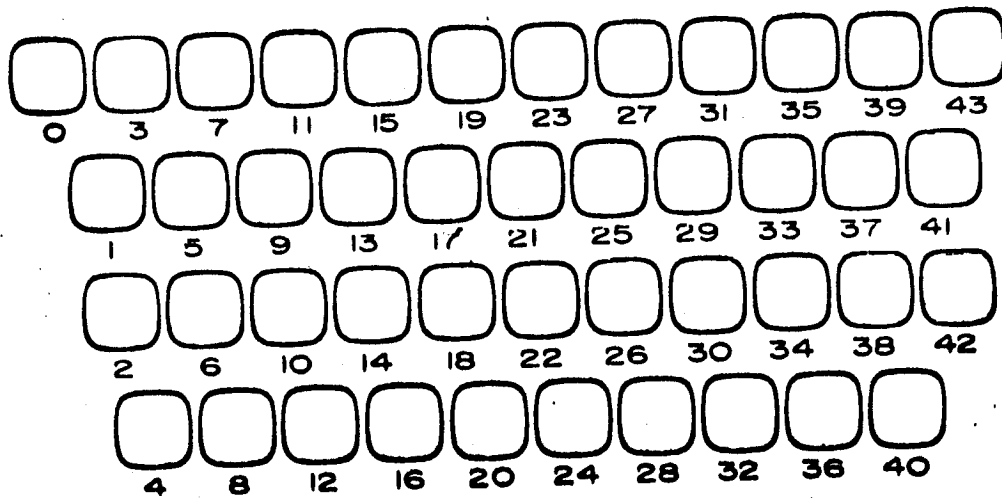
DOWNSHIFT

- 1 2 3 4 5 6 7 8 9 0
- ! @ # \$ % & ' () * +
- , - . / : ;
- [\] ^ _ ` { | } ~

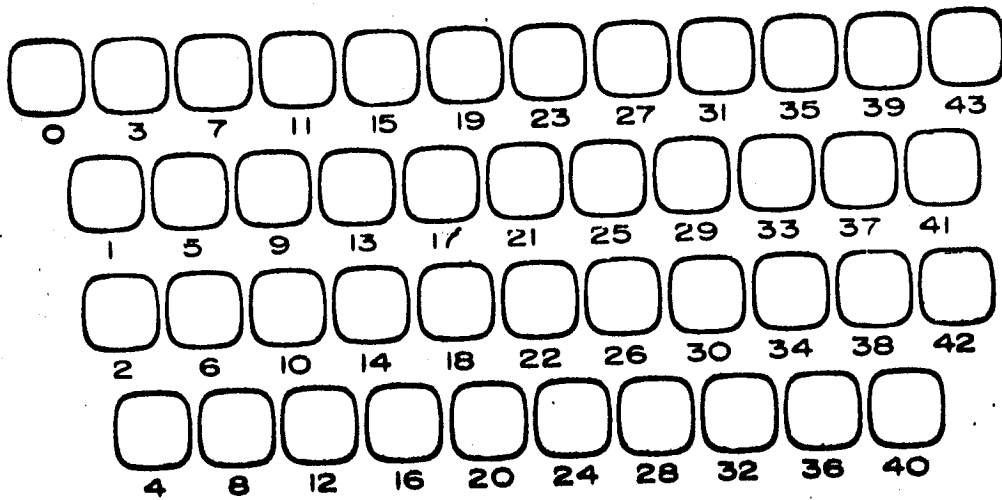
- Q R S T U V W X Y Z
- [] ^ _
- ~ { | } ~
- ~ { | } ~

- A B C D E F G H I J
- K L M N O P Q R S T U
- V W X Y Z
- [] ^ _
- ~ { | } ~

- Z Y X W V U T S R Q P
- O N M L K J I H G F E D C B
- A Z Y X W V U T S R Q P
- [] ^ _
- ~ { | } ~



0	3	7	11	15	19	23	27	31	35	39	43
1	5	9	13	17	21	25	29	33	37	41	
2	6	10	14	18	22	26	30	34	38	42	
4	8	12	16	20	24	28	32	36	40		



0	3	7	11	15	19	23	27	31	35	39	43
1	5	9	13	17	21	25	29	33	37	41	
2	6	10	14	18	22	26	30	34	38	42	
4	8	12	16	20	24	28	32	36	40		

DRAFT FOR APPROVAL
PUBLISHED: 1/2/66Identification

Character set

F. J. Corbató, R. Morris, J. H. Saltzer,

Purpose

The system will use a standard character set which will be the newly revised ASCII character set (Reference: Communications of the ACM, April 1965, pp. 207-214). The ASCII set consists of 128 7-bit characters which will be right adjusted with two leading zeros in the GE 645. The two leading bit positions are expressly reserved for future character set expansion and shall not be used by any system program. Any devices which cannot create or accept the full character set will use established conventions for representing the full set. It is emphasized that there are no meaningful subsets of the revised ASCII character set.

Revised ASCII character set

Included in the ASCII character set are 94 printing graphics, space, and 33 control characters. Within Multics, all the graphics, space, and 14 of the control characters are given precise interpretations. The remaining 19 control characters are presently reserved. The graphics in the set are the following:

Upper Case Alphabet
ABCDEFGHIJKLMNOPQRSTUVWXYZLower Case Alphabet
abcdefghijklmnopqrstuvwxyzNumerals
1234567890

Special characters

! Exclamation Point
" Double Quote Mark
Number Sign
\$ Dollar Sign
% Percent
& Ampersand
' Acute Accent
(Open Parenthesis
) Close Parenthesis
* Asterisk
+ Plus
, Comma
- Minus
. Period
/ Slant
: Colon

; Semicolon
< Less Than
= Equals
> Greater Than
? Question Mark
' Grave Accent
[Open Bracket
~ Tilde
] Close Bracket
^ Circumflex
_ Underline
@ Commercial At
{ Open Brace
} Overline
} Close Brace
| Vertical line

Control Characters.

The following conventions define the only standard meaning for the ASCII control characters within Multics. These conventions will be observed by all standard Device Interface Modules (DIM's) and by all system software inside the I/O system interface. Since some hardware devices will have different interpretations for some characters, the appropriate DIM must perform any necessary translations. Those characters noted as "not used" are reserved; future definitions may be made at any time. Until defined, "not used" control characters encountered on output will be printed out with the octal escape convention described in section BC.2.04. Users wishing a different convention for interpretation of a "not used" character must use a non-standard DIM.

If a device does not allow a function implied by a certain control character, its standard DIM will provide some reasonable interpretation for the character on output, possibly by ignoring the character.

The Multics Standard Control Characters are:

- | | | |
|------|--|------------------------------------|
| BEL | Sound an audible alarm. | <i>unless at beginning of line</i> |
| BS | Move carriage back one column. The backspace character implies overstriking, not erasure. | |
| HT | Horizontal Tabulate. Move carriage to next horizontal tab stop. On variable tab machines, in the absence of an explicit agreement between the typist and his DIM, horizontal tab stops are assumed to be at columns 11, 21, 31, 41, etc. | |
| NL | New Line. Move carriage to left edge of next line. Character code 012 (ASCII LF) is used for this function. | |
| CR | Carriage Return. Move carriage to left edge of the present line. | |
| RRS | Red Ribbon Shift. Character code 016 (ASCII S0) is used for this function. | |
| BRS | Black Ribbon Shift. Character code 017 (ASCII S1) is used for this function. | |
| NULL | Null character, ignored on output. Character code 177 (ASCII DEL) is used for this function. Note that ASCII contains two effective null characters, codes 000 (NUL) and 177 (DEL); only the latter is used on Multics. | |
| VT | Vertical tabulate, move carriage to next vertical | |

left edge?

tab stop. On variable-tab machines, in the absence of an explicit agreement between the typist and his DIM, vertical tab stops are assumed to be at line 11, 21, 31, etc.

- FF Form Feed. Move carriage to top of next page.
- HLF Half-Line Forward Feed.
Character code 022 (ASCII DC2) is used for this function.
- HLR Half-Line Reverse Feed.
Character code 024 (ASCII DC4) is used for this function.
- RHT Relative Horizontal Tabulate. The following character is interpreted as a binary integer giving a number of horizontal spaces that the carriage moves. *127 max?*
Character code 021 (ASCII DC1) is used for this function.
- RVT Relative Vertical Tabulate. The following character is interpreted as a binary integer giving a number of vertical lines that the carriage moves. *127 max?*
Character code 023 (ASCII DC3) is used for this function.

Not used:

NUL(000)	SOH(001)	STX(002)	ETX(003)	EOT(004)	ENQ(005)
ACK(006)	DLE(020)	NAK(025)	SYN(026)	ETB(027)	CAN(030)
EM(031)	SS(032)	ESC(033)	FS(034)	GS(035)	RS(036)
US(037)					

On the following page is a table of the ASCII character set as used on Multics. Positions occupied by unused control character codes are blank.

ASCII Character Set on Multics

	0	1	2	3	4	5	6	7
000								BEL
010	BS	HT	NL	VT	FF	CR	RRS	BRS
020		RHT	HLF	RVT	HLR			
030								
040	space	!	"	#	\$	%	&	'
050	()	*	+	,	-	.	/
060	0	1	2	3	4	5	6	7
070	8	9	:	;	<	=	>	?
100		A	B	C	D	E	F	G
110	H	I	J	K	L	M	N	O
120	P	Q	R	S	T	U	V	W
130	X	Y	Z	[~]	^	_
140	@	a	b	c	d	e	f	g
150	h	i	j	k	l	m	n	o
160	p	q	r	s	t	u	v	w
170	x	y	z	{	~	}		NULL

Multics Definitions:

NL	New Line (carriage return and line feed)
RHT	Relative Horizontal Tabulate (followed by tab size)
RVT	Relative Vertical Tabulate (followed by tab size)
HLF	Half-Line Forward Feed
HLR	Half-Line Reverse Feed
RRS	Red Ribbon Shift
BRS	Black Ribbon Shift
NULL	Null Character