

INTERDEPARTMENTAL

MASSACHUSETTS INSTITUTE OF TECHNOLOGY CAMBRIDGE, MASS. 02139

*from the office of*

To: D. Clark  
J. Dennis  
S. Patil  
S. Ward  
G. Wallace  
M. Schroeder

From: J. H. Saltzer

Date: July 30, 1974

Subject: Space allocation on the fifth floor

Enclosed are two floor plans, one labeled "old", describing the current floor space arrangement, and one labeled "new", describing a proposed reallocation along the lines I have discussed with you previously. The chief features of this rearrangement are:

1. Consolidation of the CSR group into one area.
2. Room 501A, in the south core area, is available for use by CS as a laboratory
3. Room 517 (labeled 518 on these old plans) has two desks available for temporary visitors from any of the groups on the fifth floor. I have labeled this space "CSR" primarily to indicate that my secretary will coordinate schedules of use. Professor Gallager's "MAC office" will also be in 517.
4. The boundary between ER and CS, at room 521C, could move one office (or  $\frac{1}{2}$  office) to the north upon negotiation between the groups involved.

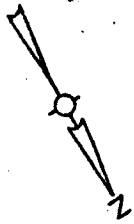
George Wallace will take over planning aspects from here on in. Details of the office arrangement within your space and any necessary moves, telephone changes, office renovations, etc., should be worked out with him. Ideally, everything should be in final position before September 1, so that we can start the fall semester with one less problem to worry about.



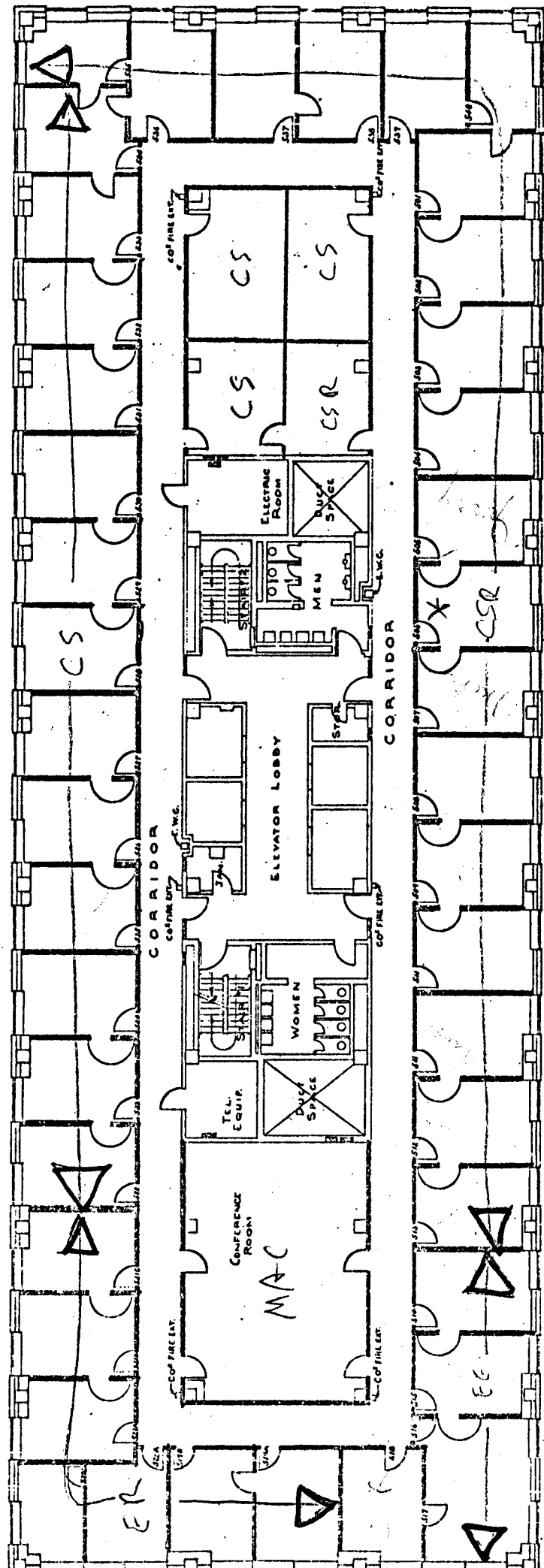
New Plan

7/20/74

Could move left  
A 1/2 room  
office



FIFTH FLOOR



FLOOR PLAN  
Scale: 1/8" = 1'-0"

- EE Electrical Engineering
- CS Computer Systems
- CSR Computer System Research
- CR Engineering Robotics
- MAC MAC General man

15,492 SQ FT