

MSS 7.0

3/24/70

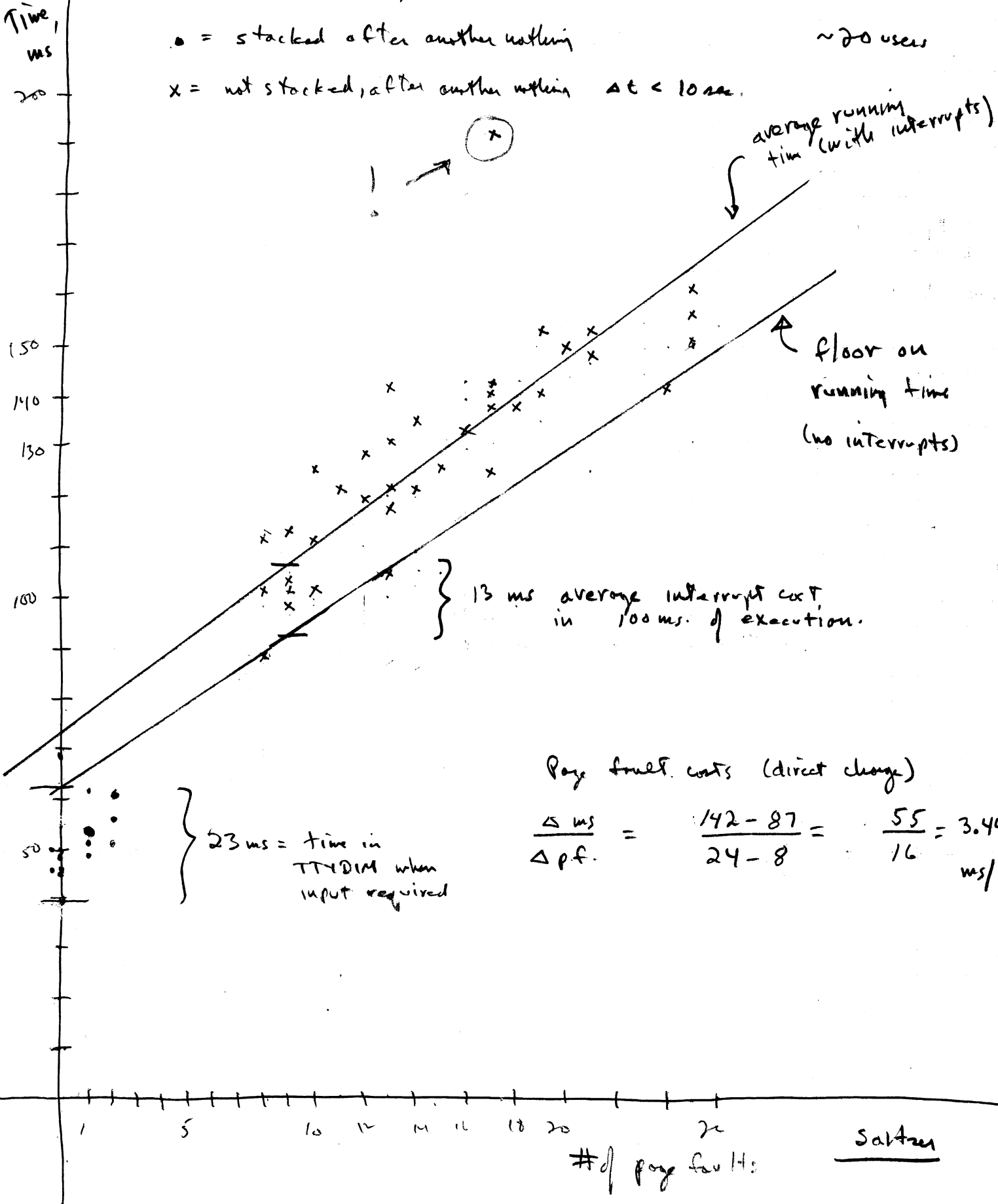
Time for 50 nothings

2200 hrs.

~20 users

• = stacked after another nothing

x = not stacked, after another nothing $\Delta t < 10 \text{ sec.}$



Page fault costs (direct charge)

$$\frac{\Delta \text{ms}}{\Delta \text{p.f.}} = \frac{142 - 87}{24 - 8} = \frac{55}{16} = 3.44 \text{ ms/fault}$$