

**A probabilistic image jigsaw puzzle solver  
- supplemental material**

Taeg Sang Cho\*, Shai Avidan<sup>†</sup>, William T. Freeman\*<sup>†</sup>

\* Massachusetts Institute of Technology, <sup>†</sup> Tel-Aviv University

taegsang@mit.edu, shai.avidan@gmail.com, billf@mit.edu

## 1. 20 images in the test set

Here, we show 20 images that were used in testing the jigsaw puzzle algorithm. We show the original image, the true low resolution image, the estimated low resolution image, and the corresponding patch ranking map. In the caption, we show the average patch ranking in each images.

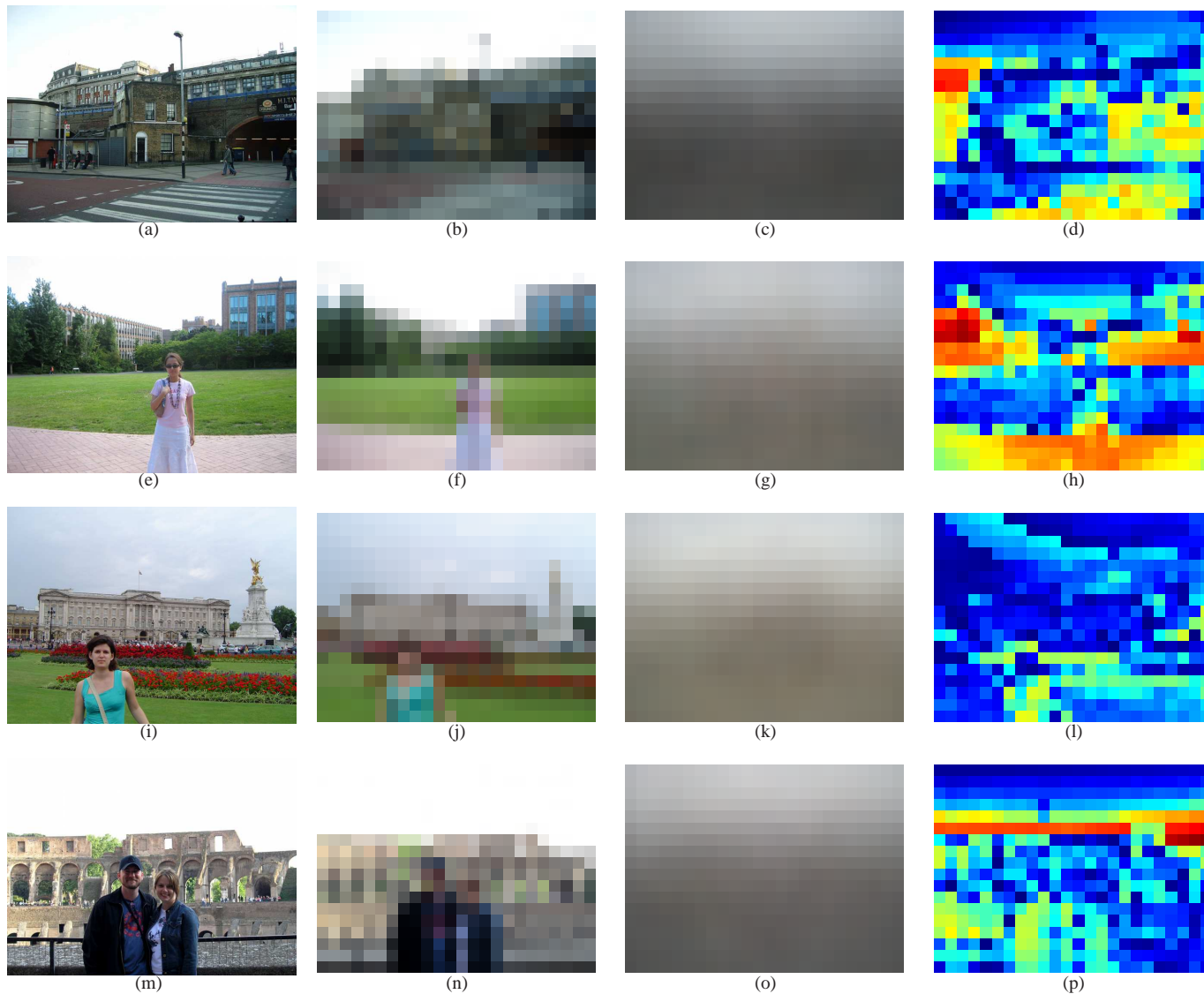


Figure 1. First column: Original image, Second column: True evidence, Third column: Estimated evidence, Fourth column: the patch ranking map. The average true patch ranking in each image: 1: 136.766, 2: 173.062, 3: 87.1736, 4: 133.1

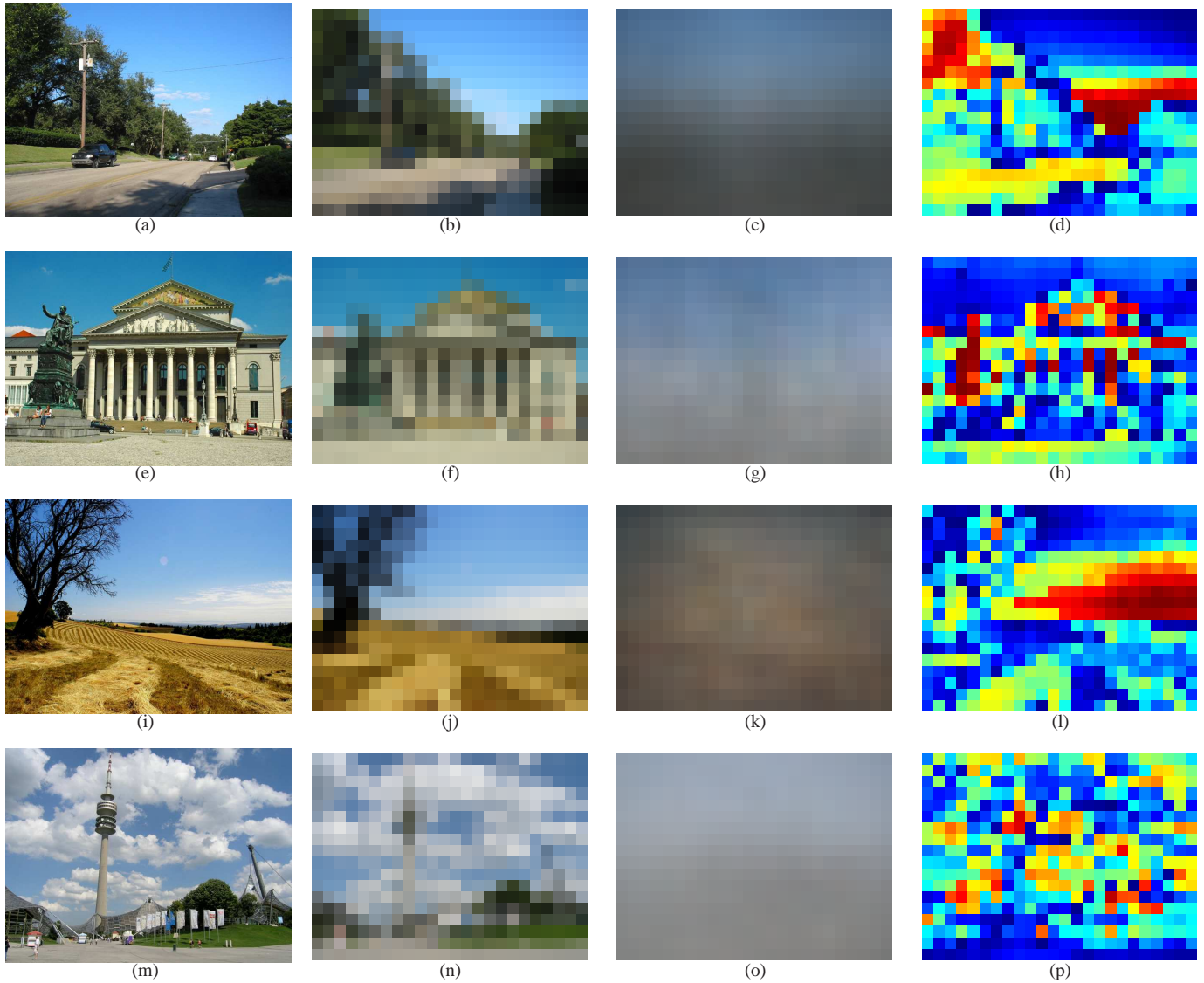


Figure 2. First column: Original image, Second column: True evidence, Third column: Estimated evidence, Fourth column: the patch ranking map. The average true patch ranking in each image: 5: 167.8079, 6: 146.8681, 7: 165.338, 8: 159.1921

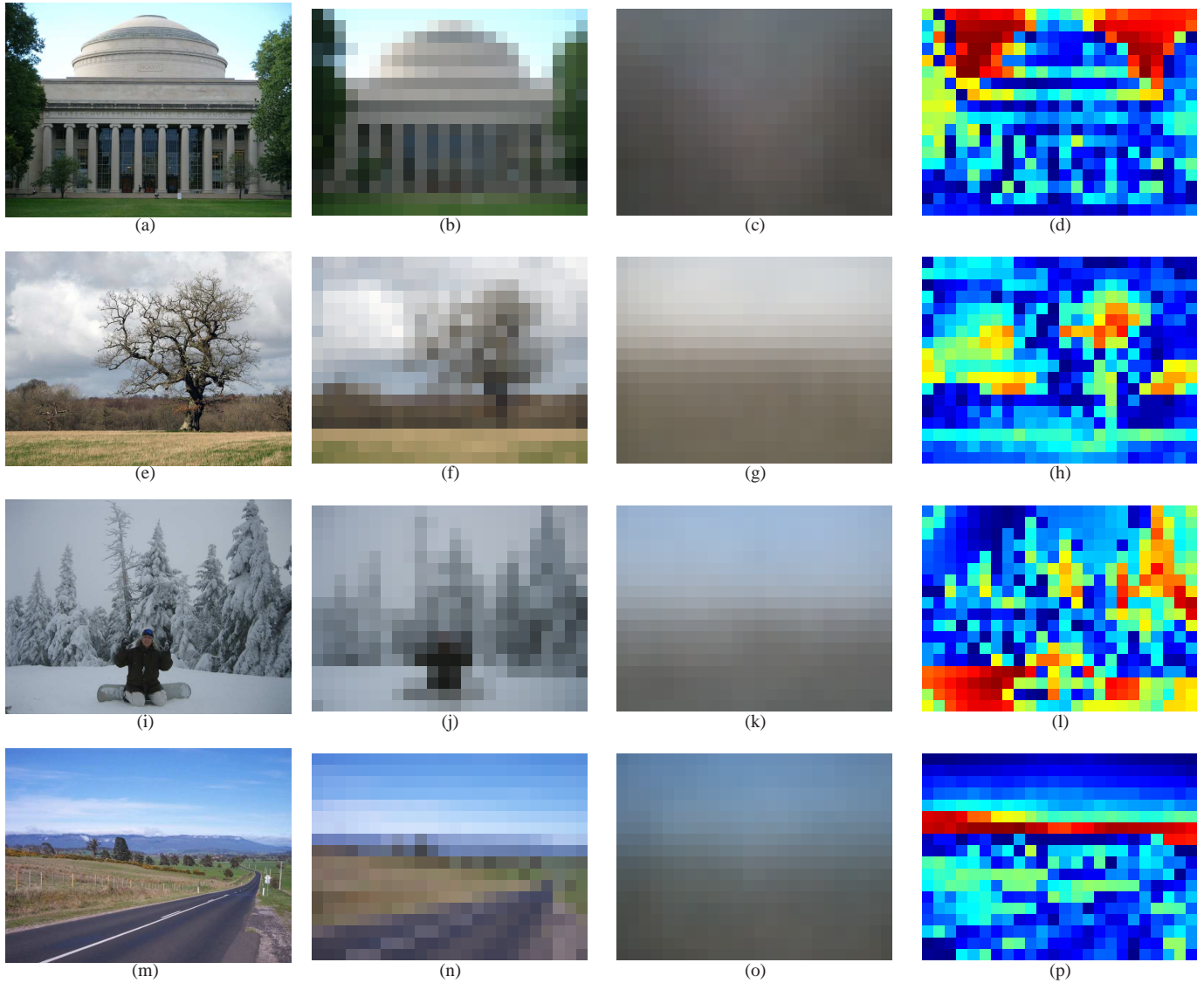


Figure 3. First column: Original image, Second column: True evidence, Third column: Estimated evidence, Fourth column: the patch ranking map. The average true patch ranking in each image: 9: 153.7176, 10: 123.5995, 11: 165.7199, 12: 120.9329

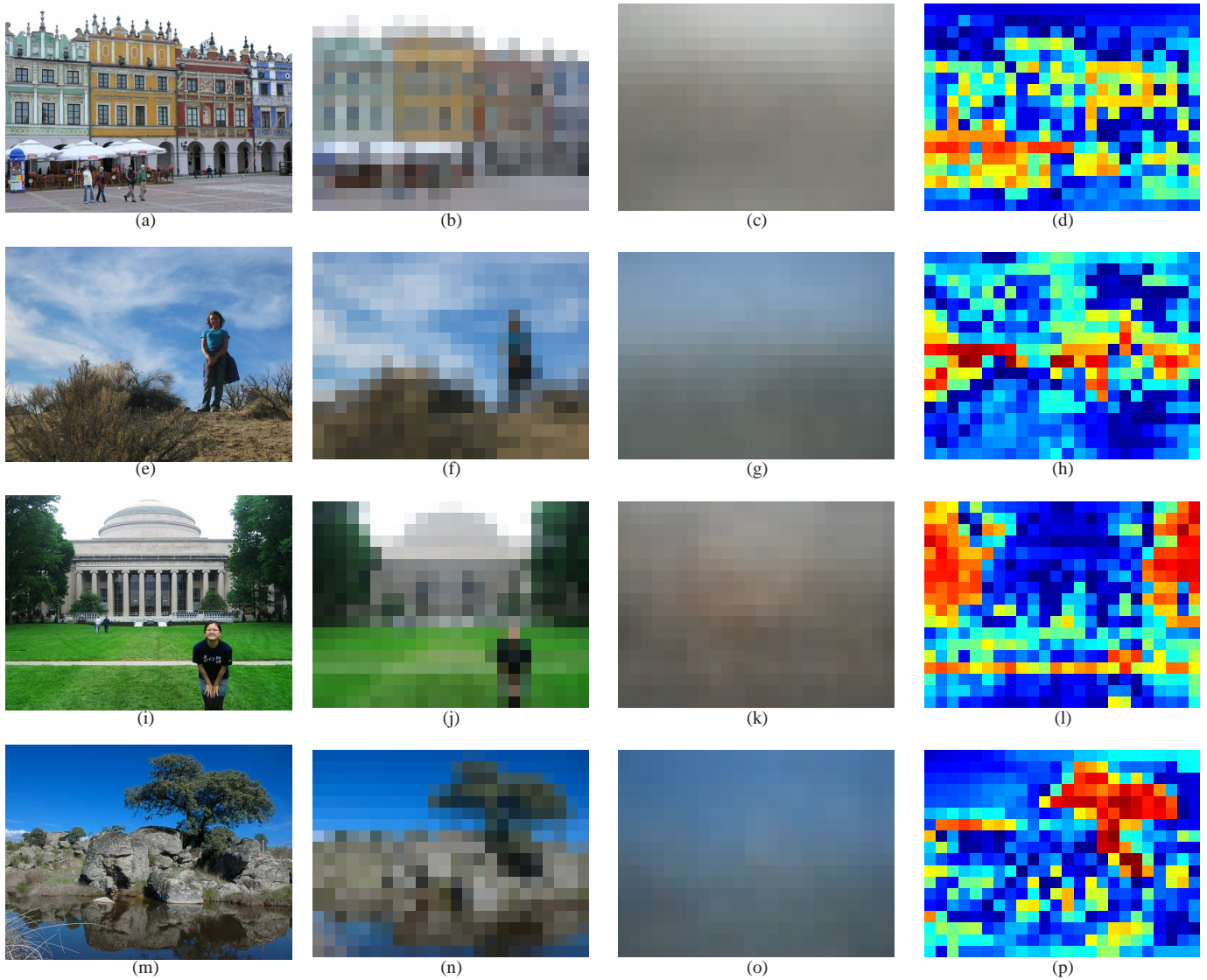


Figure 4. First column: Original image, Second column: True evidence, Third column: Estimated evidence, Fourth column: the patch ranking map. The average true patch ranking in each image: 13: 141.9745, 14: 137.9537, 15: 157.1366, 16: 143.7824

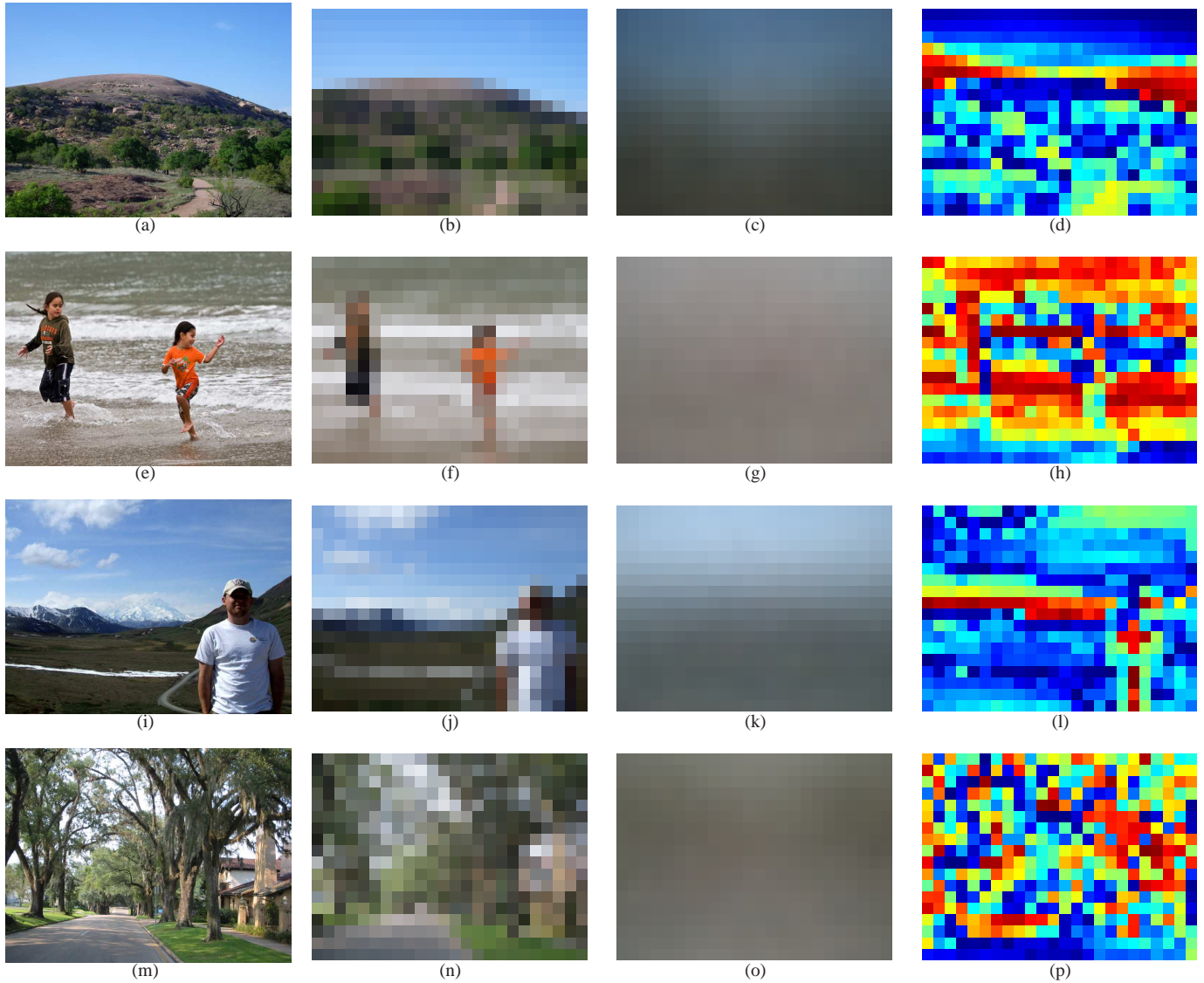


Figure 5. First column: Original image, Second column: True evidence, Third column: Estimated evidence, Fourth column: the patch ranking map. The average true patch ranking in each image: 17: 131.1042, 18: 245.0764, 19: 134, 20: 193.963

## 2. More jigsaw puzzle solver results



Original image

Increasing the number of anchor patches

Figure 6. These results are with only sparse anchor patches as the evidence.



Original image

Increasing the number of anchor patches

Figure 7. These results are with only sparse anchor patches as the evidence.