

06 Honda

Accord Sedan/Hybrid





Indulge yourself in the available leather trim.



V-6 models have Vehicle Stability Assist (VSA®).



Now you can get 6 speeds with your V-6.



Congratulations—your unwillingness to compromise is hereby rewarded.



Accord EX V-6 Sedan shown in Graphite Pearl.



Accord EX V-6 Sedan shown in Graphite Pearl.



Accord EX V-6 6-speed Sedan shown in Carbon Bronze Pearl.

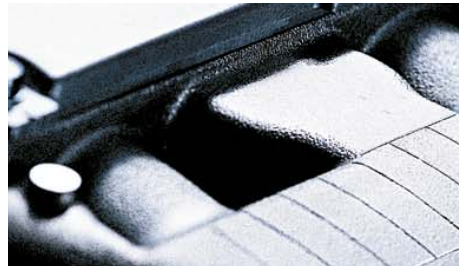
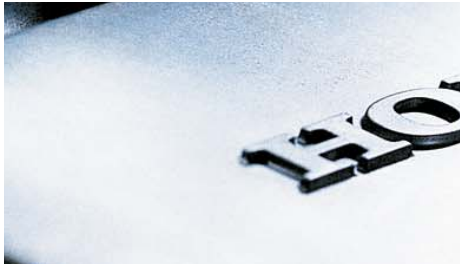
Applause from automotive experts and car lovers only encourages us to keep making the Accord better. So for 2006, styling has been significantly refreshed outside and in. Every model has more horsepower, numerous refinements and added features. And for sporting drivers, there's now an available Accord EX V-6 Sedan with a close-ratio 6-speed manual transmission. So staying ahead of the pack should be even easier.

You can't stand still
if you want to stay on top.





Accord EX V-6 Sedan shown in Graphite Pearl.



Every Accord gets the VTEC treatment.



Variable valve timing and lift electronic control (VTEC) helps spread the power across the rpm range. The i-VTEC system on 4-cylinder engines adds refinement with intake variable timing control (VTC).

The 4-valve design makes the flow really go.

More power never hurts, so every '06 Accord gets a boost. The 2.4-liter i-VTEC® 4-cylinder now has 166 hp, and the 3.0-liter VTEC® V-6 supplies 244 horses—all with excellent Honda fuel efficiency! All models now have a Drive-by-Wire Throttle System™ to refine response, and the Maintenance Minder tells you when it's time for service.



A 5-speed manual transmission and an available 5-speed automatic are your choices for 2.4-liter Accords. In addition to the 5-speed automatic for V-6 models, you can also go with a 6-speed stick.

Legendary Accord handling prowess is a product of this car's elegant double wishbone suspension with five-link rear setup. Front and rear stabilizer bars (front only on VP) make for quick cornering. Sharply honed power rack-and-pinion steering puts you in control, and on most models, 4-wheel disc brakes help ensure smooth, confident stops.



Accord EX V-6 6-speed Sedan shown in Carbon Bronze Pearl.



Unique 17" wheels are standard on the 6-speed.



The new Accord EX V-6 6-speed Sedan displays its sporting nature with a set of handsome 5-spoke 17" alloy wheels. And its six closely spaced ratios let you make the most of that big V-6 torque.



The Accord's handsomely styled interior is just as accommodating as ever in the new 6-speed model. But to impart an even sportier feel inside, the cockpit is fitted with carbon fiber-look trim.



Embrace total indulgence.

Was it made just for you? Accord drivers tend to feel that way. Controls fall easily to hand, including the steering wheel-mounted switches on LX and EX models. All Accords now have a remote entry system. And leather-trimmed models give you heated front seats and automatic climate control to enhance your experience as well.



Accord EX V-6 Sedan interior shown in Black Leather with available Honda Satellite-Linked Navigation System.^{TM3}

Drive responsibly. State laws prohibit distracted driving.

Most Accords offer 120 watts of pure sound, and on select models, a 6-disc in-dash CD changer.

There's a place for everything in your Accord.

On top of the AM, FM and CDs you can enjoy in all Accords, select models offer XM[®] Satellite Radio with over 150 digital channels.² And every single music channel is 100% commercial-free.





Accord EX V-6 Sedan interior shown in Black Leather with available Honda Satellite-Linked Navigation System.³

Your world—at your fingertips.

You'll know where you're going—even if you've never been there before—with the Accord's available Honda Satellite-Linked Navigation System.³ It uses GPS satellites, a huge DVD database, voice prompts and a moving map display to guide you to your destination.* And you can operate it, and much more, just by speaking your mind.

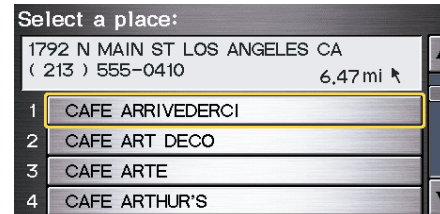
*Some roads unverified. See the navigation system owner's manual for more details on coverage.



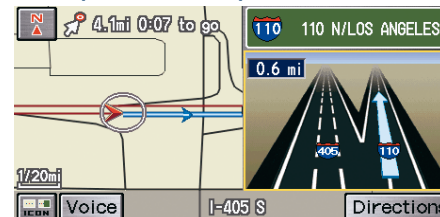
You get many options for using the system.



It can provide turn-by-turn directions.



The map zooms in on important intersections.



The available navigation system³ gives you several ways to interact, including voice control, a big 7-inch touch screen and a joystick. Its 8-gigabyte DVD holds all the maps you'll ever need,* plus a database of more than 7 million points of interest. So as long as you're in the contiguous United States, you can be guided to the nearest ATM, filling station or even the closest restaurant with just the kind of cuisine you're hungry for.

Voice recognition is at your command.



Press the voice-recognition button, and you can just speak your desire to select a destination, change the CD track or even adjust the climate control system. It can respond to over 600 commands.



Accord Hybrid: Save on fuel even quicker.

Yes, hybrids are about great fuel economy and ultra-low emissions. But with the 2006 Accord Hybrid, it's also about scintillating high performance. Because along with its exceptional 37-mpg highway rating,⁴ this Hybrid puts 253 horsepower to work making your driving a lot more enjoyable. Leave it to Honda to make social responsibility fun.



Here's the lowdown on hybrid technology.

What exactly is a hybrid powertrain? Hybrid technology teams a gasoline engine with the added boost of an integrated electric motor. We call it the Integrated Motor Assist (IMA™) System. In the Accord Hybrid, IMA gives the highly efficient and powerful V-6 gas engine even more fuel efficiency⁴ and get-up-and-go when needed. And it drives just like a regular Accord.

I never have to plug it in, right? Indeed, there's not even a plug to plug in. So you just drive the Accord Hybrid like you would any car. The electric part of the IMA System is completely self-contained and self-sufficient. Thanks to their clever design, the powertrain and braking systems recharge the batteries by recapturing kinetic energy when the car is slowing down or braking.

Is there anything special I have to do? You'll probably take special delight in driving a car that's both exhilarating and efficient. You'll have to stop for gas a lot less, and accept the special distinction of driving an Advanced Technology Partial Zero-Emission Vehicle (AT-PZEV)⁵—which meets the most stringent standard achieved by a gasoline-fueled car. Otherwise, just remember to take your Accord Hybrid to your Honda dealer for expert hybrid-vehicle service.

The Accord Hybrid features many sophisticated materials and technologies. The magnesium head covers and intake manifold on the engine—along with the aluminum hood—help reduce weight. Electric Power Steering (EPS) increases efficiency while enhancing response. A unique hybrid air-conditioning system uses an electric compressor when the engine's idle-stop feature is engaged to keep passengers comfortable. Even the alloy wheels optimize aerodynamics.

Starting

The IMA System's electric power aids the engine's horsepower for a brisk takeoff. IMA is normally used to start the engine, but there's also a backup 12-volt battery and starter if the IMA System batteries are low.



Acceleration

When you need to get up to speed or pass with authority, you have all the power of the V-6 engine plus the added boost of the electric motor. They combine to put 253 hp to the task of moving you forward quickly.



Cruising

When you maintain steady speeds and light engine loads, Variable Cylinder Management (VCM) is silently activated. It works to boost mileage and range on the highway, while IMA extends efficiency around town.



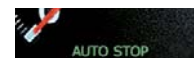
Braking

When slowing, the IMA System's electric motor becomes a generator. It recharges the batteries by recapturing kinetic energy with the help of an electronically controlled transmission tuned to maximize recharging.



At a Stop

Come up to a stoplight, and the idle-stop feature shuts down the gasoline engine to reduce fuel use and emissions. Then step on the accelerator, and combined gas and electric power provide instant propulsion.



1 Big voltage, small package.

Behind the rear seat of the Accord Hybrid resides its high-efficiency battery pack. Its nickel-metal hydride (Ni-MH) composition is designed for the rigorous duties of a hybrid vehicle. And thanks to its slim profile, there's still plenty of cargo room in the trunk. The battery system even incorporates air cooling to enhance its longevity—which is further assured by an 8-year/ 80,000-mile limited battery warranty.⁵

2 It's no ordinary gearbox.

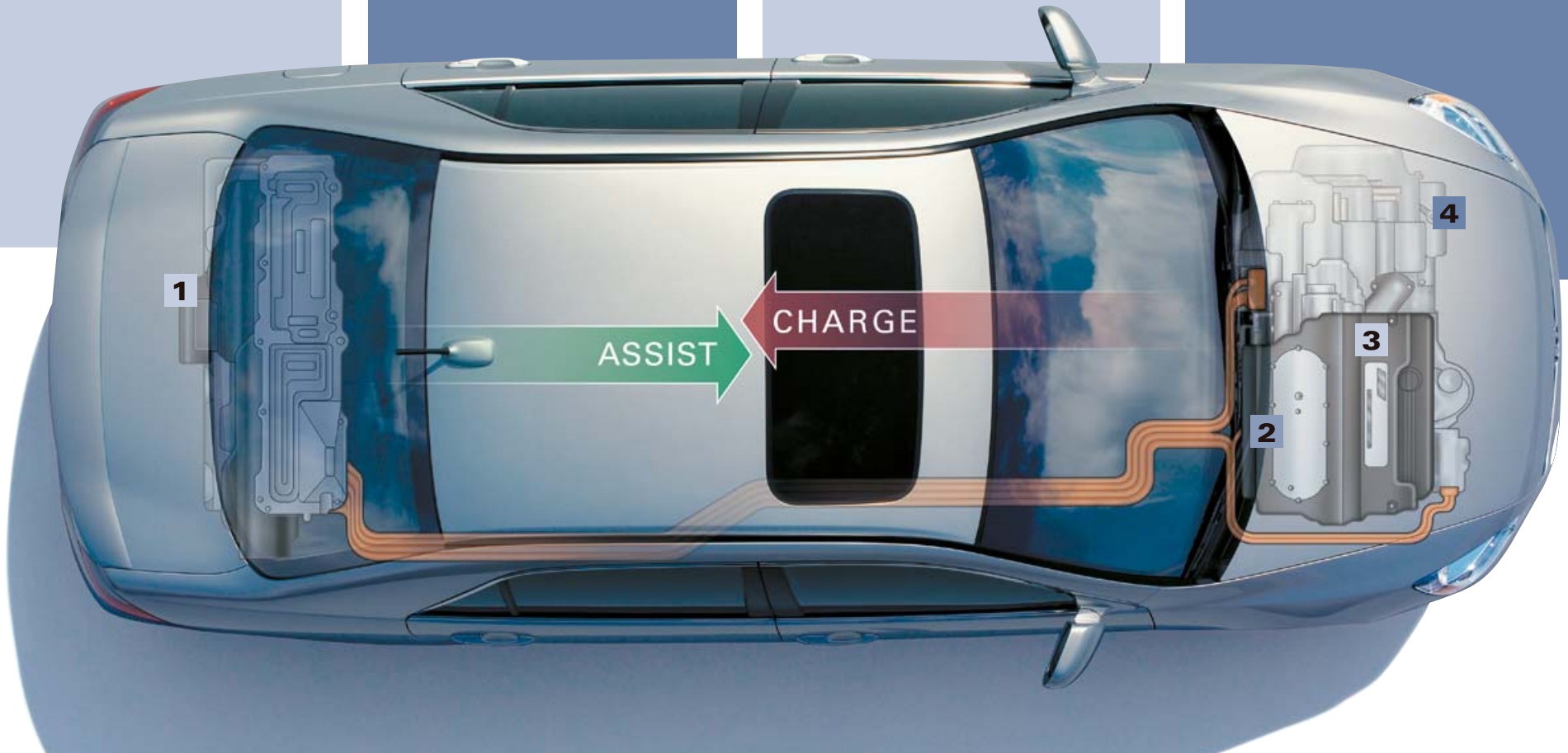
The Accord Hybrid comes equipped with a specially designed, compact 5-speed automatic transmission. This electronically controlled gearbox is programmed to downshift early when slowing, so the higher engine rpms enhance regenerative braking to help recharge the IMA System's batteries.

3 Electrons are powerful friends.

Mated to the Accord Hybrid's V-6 is an ultra-thin, brushless DC electric motor. It provides additional horsepower and torque during acceleration. In fact, 90% of peak torque is available at a low 1,000 rpm for impressive response off the line and at lower road speeds.

4 Two engines in one.

The exceptionally innovative 3.0-liter V-6 engine features Honda's advanced Variable Cylinder Management™ (VCM™) technology. When cruising, VCM turns off three of the engine's six cylinders by pausing their fuel injection and keeping the intake and exhaust valves closed. The reduced displacement helps enhance mileage and range. Accelerate, and VCM re-engages the cylinders smoothly and instantly.



Funny, it doesn't feel like a model of efficiency.

You don't have to tell anyone, but the Accord Hybrid is actually a luxury car that just happens to get economy-car mileage.⁴ Its comforts and conveniences include supple leather trim and an 8-way power driver's seat. An automatic climate control system maintains your desired environment quietly and efficiently. The remote entry system makes for quick and easy entries and exits. And for 2006, there's also a new power moonroof to bring sunny skies or starry nights inside. Being green never felt better.

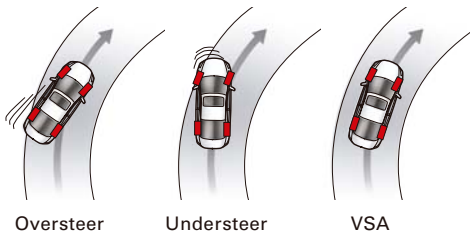


Accord Hybrid shown in Graphite Pearl.

We believe in Safety for Everyone.

The Accord's energy-absorbing crush zones and passenger safety cell help keep occupants protected – and helped Accord earn a 5-star frontal crash-test rating from the National Highway Traffic Safety Administration (NHTSA).* In fact, several Honda models have earned 5-star crash-test ratings,* the highest possible.

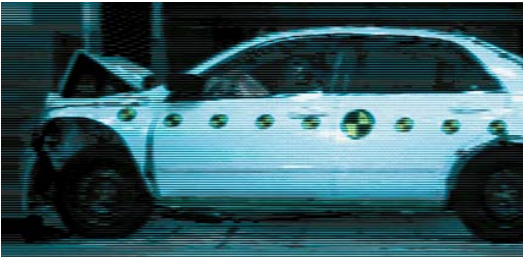
All five passengers benefit from 3-point seat belts. The front belts are equipped with pretensioners that automatically tighten in the event of a moderate-to-severe impact. Outboard rear seats have the LATCH (Lower Anchors and Tethers for Children) child-restraint system.



Honda's philosophy of **Safety for Everyone** results in advanced safety technologies in our vehicles. Every Accord has Daytime Running Lights (DRL), ABS and front, side and side curtain airbags. And now, V-6 models have Vehicle Stability Assist (VSA) as well. This sophisticated system senses oversteer and understeer, and can brake individual wheels and/or reduce power to help restore the intended course.



The Accord Sedan's Occupant Position Detection System (OPDS) will prevent deployment of the front passenger's side airbag if a child or small-statured adult is in its deployment path.



The Accord's dual-stage, dual-threshold front airbags* inflate at one of two rates and thresholds, based on the severity of impact and seat-belt use. Front side and side curtain airbags are designed to deploy in a sufficient side impact to help minimize or prevent occupant injuries.

Traction control helps reduce slip in the slop.



While stopping hard, the standard ABS helps you maintain steering—especially on slippery surfaces. And the Electronic Brake Distribution (EBD) on most models helps balance dynamic loading.

V-6 Accords have traction control. A function of VSA, it helps prevent wheel slippage during acceleration. The new Brake Assist on V-6 models is designed to help during emergency braking.



The best policy is to steer around trouble.

*National Highway Traffic Safety Administration frontal crash test: February 2003. Government star ratings are part of the National Highway Traffic Safety Administration's (NHTSA) New Car Assessment Program (NCAP), found at Safercar.gov.
 †Honda reminds you and your passengers to always buckle up. Children 12 and under are safest when properly restrained in the rear seat.

For a high-tech firm, we're pretty down to earth.

Soichiro Honda founded the Honda Motor Co. in 1948 to help people get around with affordable, dependable transportation. Within a few short years, Honda was one of the world's preeminent motorcycle manufacturers—just the first of our many successes.



All along, our guiding principle has been to listen to people and understand their needs. So we design and build our products in the markets where they're used. We place great importance on safety engineering and on being friendlier to our planet's environment. We never forget that driving should be fun. And we believe that the power of ingenious thinking can make great things possible.

We're always looking ahead.



Advanced Honda thinking takes many forms. This is ASIMO, the world's most advanced and capable humanoid robot. Along with being a prime example of pure Honda ingenuity, this remarkable machine could

also one day help improve the lives of many people who have limited physical abilities.

Honda has long led the way in making Earth-friendlier cars. The latest is our advanced zero-emission FCX fuel-cell car—the first certified for U.S. commercial use.

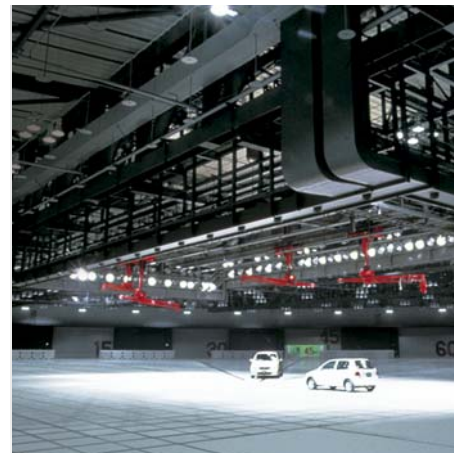
It's the only air we've got.



Honda has joined with GE—the world's largest maker of jet engines—to bring to market the Honda-developed HF118 jet engine. It offers highly fuel-efficient and low-emission performance for aircraft.



Safety engineering meets reality here.



“A company is most clearly defined neither by its people nor by its history, but by its products. Our products will speak the truth about Honda.”

Soichiro Honda, Founder, Honda Motor Co., Ltd.



Honda has been assembling cars in the U.S. since 1982. Today, close to 4 out of 5 Honda vehicles sold in the U.S. are assembled in North America – with the help of over 550 U.S. supplier companies.

Over 27,500 American associates pitch in.



Our advanced safety research facilities play a critical role in the evolution of our automotive **Safety for Everyone** effort. Through a comprehensive and evolving approach to vehicle safety, Honda seeks to provide a high level of occupant and pedestrian protection in all of our cars and trucks, regardless of size or price, as well as increased crash compatibility with other vehicles.

Racing makes for quicker engineers.



Generators, outboards, lawnmowers, personal watercraft, cars, trucks, motorcycles, ATVs and more add up to Honda’s being the world’s largest engine maker.



Racing improves our products – and our engineers’ ability to innovate. Honda’s latest victories include the first four places in the 2005 Indy 500, topped by Dan Wheldon of Andretti Green Racing.

Accord LX V-6



Accord EX V-6 6-Speed



Accord Hybrid



When it comes to choosing the best Accord, you just can't miss. Every Accord model has what it takes to make you happy to be a driver. And the experts feel it, too. *Car and Driver* magazine placed Accord on its 2005 "10Best" Cars list—the 19th time in 23 years—saying, "No other car has come close." *The Car Book 2005* by Jack Gillis calls Accord a "Best Bet." And *Consumer Guide*[®] named it "Best Buy" for midsized cars.¹ So which 2006 Accord wins your vote?



Accord EX V-6

Accord Hybrid

Adds to or replaces EX V-6 features:

- 253-hp, 3.0-liter i-VTEC V-6 engine with Integrated Motor Assist (IMA)
- Variable Cylinder Management (VCM)
- Compact 5-speed automatic transmission
- Dual-zone hybrid automatic climate control system

- Exclusive front chin spoiler, rear diffuser, rear spoiler and taillights
- Aerodynamic 16-inch alloy wheels
- Side mirror turn indicators
- Exclusive IMA charge/assist display
- Advanced Technology Partial Zero-Emission Vehicle (AT-PZEV)² emissions rating

Accord Value Package Sedan

- 166-hp, 2.4-liter i-VTEC 4-cylinder engine
- Drive-by-Wire Throttle System
- 5-speed manual transmission
- Available 5-speed automatic transmission
- 4-wheel double wishbone suspension
- Front, front side and side curtain airbags
- Remote entry system
- Anti-lock braking system (ABS)
- Daytime Running Lights (DRL)
- Tilt and telescopic steering column
- Air conditioning with air-filtration system
- Cruise control
- 16-inch alloy wheels

Accord LX Sedan

Adds Value Package features plus:

- 120-watt AM/FM/CD audio system with 6 speakers
- Power mirrors
- Illuminated steering wheel-mounted controls
- Variable intermittent windshield wipers

Special Edition adds:

- 6-disk in-dash CD changer
- 16-inch alloy wheels
- Steering wheel-mounted audio controls
- Carbon fiber-look interior accents
- 4-wheel disk brakes
- Electronic Brake Distribution (EBD)

Accord EX Sedan

Adds to or replaces LX Special Edition features:

- Power moonroof with tilt feature
- Heated side mirrors
- Premium interior accents
- Security system
- Available leather-trimmed interior with heated front seats, 8-way power driver's seat, dual-zone automatic climate control system and XM Satellite Radio³
- Available Honda Satellite-Linked Navigation System⁴ with Voice Recognition

Accord LX V-6 Sedan

Adds to or replaces LX Special Edition features:

- 244-hp, 3.0-liter VTEC V-6 engine
- 5-speed automatic transmission
- Vehicle Stability Assist (VSA) with traction control
- Brake Assist
- Power moonroof with tilt feature
- Heated side mirrors
- Driver's seat with 8-way power adjustment
- 17-inch alloy wheels
- Interior accents

Accord EX V-6 Sedan

Adds to or replaces LX V-6 features:

- Leather-trimmed interior
- Heated front seats
- Dual-zone automatic climate control system
- XM Satellite Radio³
- HomeLink[®] remote system⁵
- Available Honda Satellite-Linked Navigation System⁴ with Voice Recognition

Accord EX V-6 6-Speed Sedan

Adds to or replaces EX V-6 features:

- Close-ratio 6-speed manual transmission
- Carbon fiber-look interior trim
- 180-watt AM/FM/6-disc in-dash CD premium audio system
- Exclusive 17-inch alloy wheels



Accord LX Special Edition shown in Redondo Red Pearl.

2006 accord sedan | specifications and features

Engineering	VP	LX/LX SE	EX	LX V-6	EX V-6/6MT
Engine Type	In-Line 4-Cylinder	In-Line 4-Cylinder	In-Line 4-Cylinder	V-6	V-6
Engine Block/Cylinder Head	Aluminum-Alloy	Aluminum-Alloy	Aluminum-Alloy	Aluminum-Alloy	Aluminum-Alloy
Displacement (cc)	2354	2354	2354	2997	2997
Horsepower @ rpm (SAE net, Rev 8/04)*	166 @ 5800	166 @ 5800	166 @ 5800	244 @ 6250	244 @ 6250
Torque (lb.-ft. @ rpm)*	160 @ 4000	160 @ 4000	160 @ 4000	211 @ 5000	211 @ 5000
Compression Ratio	9.7:1	9.7:1	9.7:1	10.0:1	10.0:1
Valve Train	16-Valve DOHC i-VTEC®	16-Valve DOHC i-VTEC	16-Valve DOHC i-VTEC	24-Valve SOHC VTEC®	24-Valve SOHC VTEC
Multi-Point Fuel Injection	•	•	•	•	•
Drive-by-Wire Throttle System™	•	•	•	•	•
CARB Emissions Rating	LEV-2	LEV-2/PZEV†	LEV-2/PZEV†	LEV-2/ULEV-2**	LEV-2/ULEV-2**
Direct Ignition System with Immobilizer	•	•	•	•	•
100,000-Miles-or-More Tune-Up Interval††	•	•	•	•	•
Transmissions					
5-Speed Manual Transmission	•	•	•		
5-Speed Automatic Transmission	Available	Available	Available	•	•
Close-Ratio 6-Speed Manual Transmission					6MT only
Body/Suspension/Chassis					
Unit-Body Construction	•	•	•	•	•
Double Wishbone Front Suspension	•	•	•	•	•
Five-Link Double Wishbone Rear Suspension	•	•	•	•	•
Stabilizer Bar (mm, front/rear)	25.4/NA	25.4/14.0	25.4/14.0	25.4/13.0	25.4/13.0
Variable-Assist Power Rack-and-Pinion Steering	•	•	•	•	•
Steering Wheel Turns, Lock-to-Lock	2.94	2.94	2.94	2.75	2.75
Turning Diameter, Curb-to-Curb (ft.)	36.1	36.1	36.1	39.6	39.6
Power-Assisted Ventilated Front Disc/Rear Drum Brakes	•	LX only			
Power-Assisted Ventilated Front Disc/Solid Rear Disc Brakes		Special Edition only	•	•	•
Wheels	15" with Full Covers	15" with Full Covers/16" Alloy (SE)	16" Alloy	17" Alloy	17" Alloy/Exclusive 17" Alloy (6MT)
All-Season Tires	P195/65 R15 89H	P205/65 R15 92H / P205/60 R16 91V (SE)	P205/60 R16 91V	P215/50 R17 93V	P215/50 R17 93V
Interior Measurements					
Headroom (in., front/rear)	40.4/38.5	40.4/38.5	38.3/36.8	38.3/36.8	38.3/36.8
Legroom (in., front/rear)	42.6/36.8	42.6/36.8	42.6/36.8	42.6/36.8	42.6/36.8
Shoulder Room (in., front/rear)	56.9/56.1	56.9/56.1	56.9/56.1	56.9/56.1	56.9/56.1
Hiproom (in., front/rear)	54.6/53.5	54.6/53.5	54.6/53.5	54.6/53.5	54.6/53.5
Cargo Volume (cu. ft.)	14.0	14.0	14.0	14.0	14.0
Passenger Volume (cu. ft.)	102.7	102.7	97.7	97.7	97.7
Seating Capacity	5	5	5	5	5
Exterior Measurements					
Wheelbase (in.)	107.9	107.9	107.9	107.9	107.9
Length (in.)	191.1	191.1	191.1	191.1	191.1
Height (in.)	57.2	57.2	57.2	57.3	57.3
Width (in.)	71.6	71.6	71.6	71.6	71.6
Track (in., front/rear)	61.1/61.2	61.1/61.2	61.1/61.2	61.1/61.2	61.1/61.2
Curb Weight (lbs., MT/AT)	3128/3192 3131/3197 (SE)	3137/3201	3168/3239	NA/3415 3371/NA (6MT)	NA/3437
EPA Mileage Estimates*/Fuel Capacity					
5-Speed Manual Transmission (City/Highway)	26/34	26/34	26/34		
5-Speed Automatic Transmission (City/Highway)	24/34*	24/34*	24/34*	20/29	20/29
6-Speed Manual Transmission (City/Highway)					21/30
Fuel (gal.)	17.1	17.1	17.1	17.1	17.1
Required Fuel	Regular Unleaded	Regular Unleaded	Regular Unleaded	Regular Unleaded	Regular Unleaded
Seating					
Leather-Trimmed Seats and Door-Panel Inserts			Available		•
Heated Front Seats			(with Leather)		•
Driver's Seat with 8-Way Power Adjustment			(with Leather)	•	•
Driver's Seat Adjustable Lumbar Support			•		•
Driver's Seat with Power Height Adjustment		Manual	•		
Passenger's Seat with 4-Way Power Adjustment					•
Fold-Down Rear Seatback with Lock	•	•	•	•	•
Fold-Down Rear Seat Center Armrest/Trunk Pass-Through with Lock		•	•	•	•
Audio Systems					
120-Watt AM/FM/CD Audio System	with 2 Speakers	with 6 Speakers			
120-Watt AM/FM/6-Disc In-Dash CD Changer Audio System		with 6 Speakers (SE only)	with 6 Speakers	with 6 Speakers	with 6 Speakers
180-Watt AM/FM/6-Disc In-Dash CD Changer Premium Audio System					with 6 Speakers (6MT only)
XM® Satellite Radio2			(with Leather)		•

*Horsepower and torque calculations reflect new SAE J1349 procedures revised August, 2004. †PZEV (Partial Zero-Emission Vehicle) as certified by California Air Resources Board (CARB). **ULEV-2 rated on V-6 models available in California and some Northeastern states. ††Does not apply to fluid and filter changes. Exact mileage is determined by actual driving conditions. Please see your owner's manual for more details.

2006 accord sedan | specifications and features *(cont.)*

Safety	VP	LX/LX SE	EX	LX V-6	EX V-6/6MT
3-Point Seat Belts at All Seating Positions	•	•	•	•	•
Front 3-Point Seat Belts with Automatic Tensioning System	•	•	•	•	•
Driver's and Front Passenger's Seat Belt Reminder	•	•	•	•	•
Adjustable Front Seat Belt Anchors	•	•	•	•	•
Dual-Stage, Dual-Threshold Front Airbags (SRS)	•	•	•	•	•
Front Side Airbags with Passenger-Side Occupant Position Detection System (OPDS)	•	•	•	•	•
Side Curtain Airbags	•	•	•	•	•
Vehicle Stability Assist (VSA®) with Traction Control	•	•	•	•	•
Brake Assist	•	•	•	•	•
Anti-Lock Braking System (ABS)	•	•	•	•	•
Electronic Brake Distribution (EBD)	•	Special Edition only	•	•	•
Daytime Running Lights (DRL)	•	•	•	•	•
Side-Impact Door Beams	•	•	•	•	•
Outboard Lower Anchors and Tethers for Children (LATCH)	•	•	•	•	•
Child-Seat Tether Anchor <i>(rear-center)</i>	•	•	•	•	•
Child-Proof Rear Door Locks	•	•	•	•	•
Emergency Trunk Opener	•	•	•	•	•
Exterior Features					
Power Moonroof with Tilt Feature	•	•	•	•	•
Security System	•	•	•	•	•
Remote Entry System with Power Window Control	•	•	•	•	•
Variable Intermittent Windshield Wipers	Non-Variable	•	•	•	•
Multi-Reflector Halogen Headlights	•	with Auto-Off	with Auto-Off	with Auto-Off	with Auto-Off
Body-Colored Power Side Mirrors	Manual/Black	•	Heated	Heated	Heated
Body-Colored Body Side Molding	•	•	•	•	•
Body-Colored Impact-Absorbing Bumpers	•	•	•	•	•
Chrome Exhaust Finisher	•	•	•	Dual Exhaust	Dual Exhaust
Chrome Window Trim	Black	•	•	•	•
LED Taillights	•	•	•	•	•
Comfort & Convenience					
Air Conditioning with Air-Filtration System	•	•	•	•	•
Dual-Zone Automatic Climate Control System	•	•	(with Leather)	•	•
Honda Satellite-Linked Navigation System™ with Voice Recognition	•	•	Available (with Leather)	•	Available
Power Windows with Auto-Up/Down Driver's Window	•	•	•	•	•
Illuminated Power Window Switches	•	•	•	•	•
Power Door Locks	•	•	•	•	•
Cruise Control	•	•	•	•	•
Perforated Leather-Wrapped Steering Wheel	•	•	(with Leather)	•	•
Aluminum Shift Knob with Perforated Leather	•	•	•	•	6MT only
Illuminated Steering Wheel-Mounted Controls	•	Cruise/Audio (SE only)	Cruise/Audio/Navi (available)	Cruise/Audio	Cruise/Audio/Navi (available)
Tilt and Telescopic Steering Column	•	•	•	•	•
HomeLink® Remote System ³	•	•	•	•	•
Premium Interior Accents	•	Carbon-Fiber-Look (SE)	•	•	Carbon-Fiber-Look (6MT)
Center Console with Sliding Armrest and Storage Compartments	•	•	•	•	•
Beverage Holders, Front and Rear <i>(8 total)</i>	6 Total	•	•	•	•
Driver's and Front Passenger's Illuminated Vanity Mirrors	Non-Illuminated	•	•	•	•
Ambient Console Lighting	•	•	•	•	•
Map Lights	•	•	•	•	•
Sunglasses Holder	•	•	•	•	•
12-Volt Power Outlets <i>(2)</i>	Single Outlet	•	•	•	•
Lockable Glove Compartment with Light	•	•	•	•	•
Electronic Remote Trunk Release	•	•	•	•	•
Side Door Pockets with Integrated Beverage Holder, Front and Rear	•	•	•	•	•
Instrumentation					
Maintenance Minder System	•	•	•	•	•
Gray Backlit Gauges	•	•	•	•	•
Tachometer	•	•	•	•	•
Digital Odometer and Digital Trip Meters <i>(2)</i>	•	•	•	•	•
Exterior Temperature Indicator	•	•	(with Leather)	•	•

¹ Based on 2006 mileage estimates. Use for comparison purposes only. Actual mileage may vary. ² Required XM® subscription sold separately after three trial months. All fees and programming subject to change. Subscriptions subject to Customer Agreement available at xmradio.com. XM service only available in the 48 contiguous United States. The XM name and XM Ready are registered trademarks of XM Satellite Radio Inc. ³ The Honda Satellite-Linked Navigation System is available only in the 48 contiguous United States on select EX and Hybrid models. ⁴ Based on 2005 EPA mileage estimates. Final 2006 EPA mileage estimates were not available at the time of printing. Use for comparison purposes only. Actual mileage may vary. ⁵ AT-PZEV rated by California Air Resources Board (CARB). ⁶ Limited battery-pack warranty may vary. Consult your warranty booklet. AT-PZEV model differs slightly due to emissions. ⁷ 2005 Consumer Guide, Consumer Guide® is a registered trademark of Publications International, Ltd. ⁸ HomeLink® is a registered trademark of Prince Corporation, a wholly owned subsidiary of Johnson Controls.™ ⁹ 3-Year/36,000-Mile Limited Warranty, 5-Year/60,000-Mile Limited Powertrain Warranty. Ordinary maintenance or adjustments, parts subject to normal wear and replacement, and certain items are excluded. See your Honda dealer for terms and conditions of the limited warranties. **Always use seat belts and appropriate child seats. Children 12 and under are safest when properly restrained in the rear seat.** Specifications, features, illustrations and equipment shown in this brochure are based upon the latest information available at the time of printing. Although descriptions are believed to be correct, accuracy cannot be guaranteed. American Honda Motor Co., Inc., reserves the right to make changes at any time, without notice or obligation, in colors, specifications, accessories, materials and models. Some features mentioned herein are not available in all areas. See your Honda dealer for details. Some vehicles may be shown with optional equipment. Available = Optional. NA = Not applicable. All images contained herein are either owned by American Honda Motor Co., Inc., or used under a valid license. It is a violation of federal law to reproduce these images without express written permission from American Honda Motor Co., Inc., or the individual copyright owner of such images. Honda Financial Services is a DBA of American Honda Finance Corporation. Honda, the H-mark symbol, Honda Care, Honda Satellite-Linked Navigation System, Drive-by-Wire Throttle System, IMA, i-VTEC, Variable Cylinder Management, VCM, VSA and VTEC are trademarks of Honda Motor Co., Ltd. ©2005 American Honda Motor Co., Inc.

2006 accord hybrid | specifications and features

Engineering	Hybrid
Engine Type	V-6
Engine Block/Cylinder Head	Aluminum-Alloy
Displacement (cc)	2997
Horsepower @ rpm (SAE net, Rev 8/04)*	253 @ 6000
Torque (lb.-ft. @ rpm)*	232 @ 5000
Compression Ratio	10.5:1
Valve Train	24-Valve SOHC I-VTEC®
Multi-Point Fuel Injection	•
Drive-by-Wire Throttle System™	•
Idle-Stop Feature	•
Variable Cylinder Management™ (VCM™)	•
Active Control Engine Mount System (ACM)	•
Active Noise Cancellation (ANC)	•
CARB Emissions Rating	AT-P2EV [†]
Direct Ignition System with Immobilizer	•
100,000-Miles-or-More Tune-Up Interval‡	•
Transmission	
Compact 5-Speed Automatic Transmission	•
Electric Motor/Generator	
Permanent Magnet Motor	•
Motor Width (mm)	68
Electric Power Storage	
Nickel-Metal Hydride (Ni-MH) Battery	•
Output	13.8 kW
Rated Capacity	6.0 Ah
Body/Suspension/Chassis	
Unit-Body Construction	•
Double Wishbone Front Suspension	•
Five-Link Double Wishbone Rear Suspension	•
Stabilizer Bar (mm, front/rear)	25.4/14.0
Electric Power-Assisted Rack-and-Pinion Steering (EPS)	•
Steering Wheel Turns, Lock-to-Lock	3.17
Steering Ratio	16.25
Turning Diameter, Curb-to-Curb (ft.)	36.1
Power-Assisted Ventilated Front Disc/Solid Rear Disc Brakes	•
Wheels	16" Lightweight Alloy
All-Season Tires	P215/60 R16 94V
Interior Measurements	
Headroom (in., front/rear)	38.3/36.8
Legroom (in., front/rear)	42.6/36.8
Shoulder Room (in., front/rear)	56.9/56.1
Hiproom (in., front/rear)	54.6/53.5
Cargo Volume (cu. ft.)	11.2
Passenger Volume (cu. ft.)	102.7
Seating Capacity	5
Exterior Measurements	
Wheelbase (in.)	107.9
Length (in.)	191.1
Height (in.)	57.2
Width (in.)	71.6
Track (in., front/rear)	61.1/61.2
Curb Weight (lbs.)	3589
EPA Mileage Estimates/Capacities	
5-Speed Automatic Transmission (City/Highway)	29/37 [†]
Crankcase (qt.)	5.3
Coolant System (qt.)	8.9
Fuel (gal.)	17.1
Required Fuel	Regular Unleaded
Audio System	
120-Watt AM/FM/6-Disc In-Dash CD Changer Audio System	with 6 Speakers
XM® Satellite Radio [‡]	•

*Horsepower and torque calculations reflect new SAE J1349 procedures revised August, 2004.

†Does not apply to fluid and filter changes. Exact mileage is determined by actual driving conditions.

Please see your owner's manual for more details.

Safety	Hybrid
3-Point Seat Belts at All Seating Positions	•
Front 3-Point Seat Belts with Automatic Tensioning System	•
Adjustable Front Seat Belt Anchors	•
Driver's and Front Passenger's Seat Belt Reminder	•
Dual-Stage, Dual-Threshold Front Airbags (SRS)	•
Front Side Airbags with Passenger-Side Occupant Position Detection System (OPDS)	•
Side Curtain Airbags	•
Vehicle Stability Assist (VSA®) with Traction Control	•
Anti-Lock Braking System (ABS)	•
Electronic Brake Distribution (EBD)	•
Daytime Running Lights (DRL)	•
Side-Impact Door Beams	•
Outboard Lower Anchors and Tethers for Children (LATCH)	•
Rear-Center Child-Seat Tether Anchor	•
Child-Proof Rear Door Locks	•
Emergency Trunk Opener	•
Exterior Features	
Security System	•
Remote Entry System with Power Window Control	•
Variable Intermittent Windshield Wipers	•
Rear Decklid Spoiler	•
Multi-Reflector Halogen Headlights	with Auto-Off
Body-Colored Power Side Mirrors with Integrated Turn Indicators	Heated
Body-Colored Body Side Molding	•
Body-Colored Impact-Absorbing Bumpers	•
Chrome Exhaust Finisher	Dual Exhaust
Chrome Window Trim	•
LED Taillights	•
Comfort & Convenience	
Power Moonroof with Tilt Feature	•
Dual-Zone Hybrid Automatic Climate Control System	•
Honda Satellite-Linked Navigation System™ ³ with Voice Recognition	Available
Power Windows with Auto-Up/Down Driver's Window	•
Illuminated Power Window Switches	•
Power Door Locks	•
Cruise Control	•
Perforated Leather-Wrapped Steering Wheel	•
Illuminated Steering Wheel-Mounted Controls	•
Tilt and Telescopic Steering Column	•
HomeLink® Remote System [†]	•
Premium Interior Accents	•
Center Console with Sliding Armrest and Storage Compartments	•
Beverage Holders, Front and Rear (8 total)	•
Driver's and Front Passenger's Illuminated Vanity Mirrors	•
Ambient Console Lighting	•
Map Lights	•
Sunglasses Holder	•
12-Volt Power Outlets (2 total)	•
Lockable Glove Compartment with Light	•
Electronic Remote Trunk Release	•
Rear Window Defroster	•
Seating	
Leather-Trimmed Seats and Door Panel Inserts	•
Heated Front Seats	•
Driver's Seat with 8-Way Power Adjustment	•
Instrumentation	
Maintenance Minder System	•
Tachometer	•
Idle-Stop Indicator	•
IMA Charge and Assist Indicators	•
Battery Charge Indicator	•
Digital Odometer and Digital Trip Meters (2)	•



Sport Package

The EX Sport Package is an easy way to spice up your new Accord. Installed by your dealer, the package adds a rear wing spoiler, fog lights and an automatic day/night rearview mirror.



Convenience Package

The dealer-installed LX Convenience Package can quickly enhance your new Accord Sedan, adding sporty alloy wheels, wheel locks, splash guards and a cargo tray for extra versatility.



Accord Coupe



Civic Sedan



Civic Hybrid



Civic Coupe



S2000



Insight



Element



CR-V



Pilot



Ridgeline



Odyssey



Your dealer's team of trained technicians is at the ready to help keep your Honda in superb shape. All 2006 Honda vehicles—and any Genuine Honda Accessories installed at the time of purchase—are covered by the 3-year/36,000-mile New-Vehicle Limited Warranty.⁹ Plus, Honda cars and trucks are covered by a 5-year/60,000-mile Limited Powertrain Warranty, too.

For more information or assistance, see your Honda dealer or please give us a call at 1-800-33-Honda.

HONDA

Financial Services

Whether you buy or lease a Honda vehicle, Honda Financial Services can assist you with the process. Please ask your dealer which lease or purchase plan best suits your needs.

HONDA Care

Honda Care™ is a highly affordable, comprehensive vehicle and travel protection plan backed by Honda reliability, service and parts. Please see your dealer for all the details.

