

## Site Watcher, Full Package Client

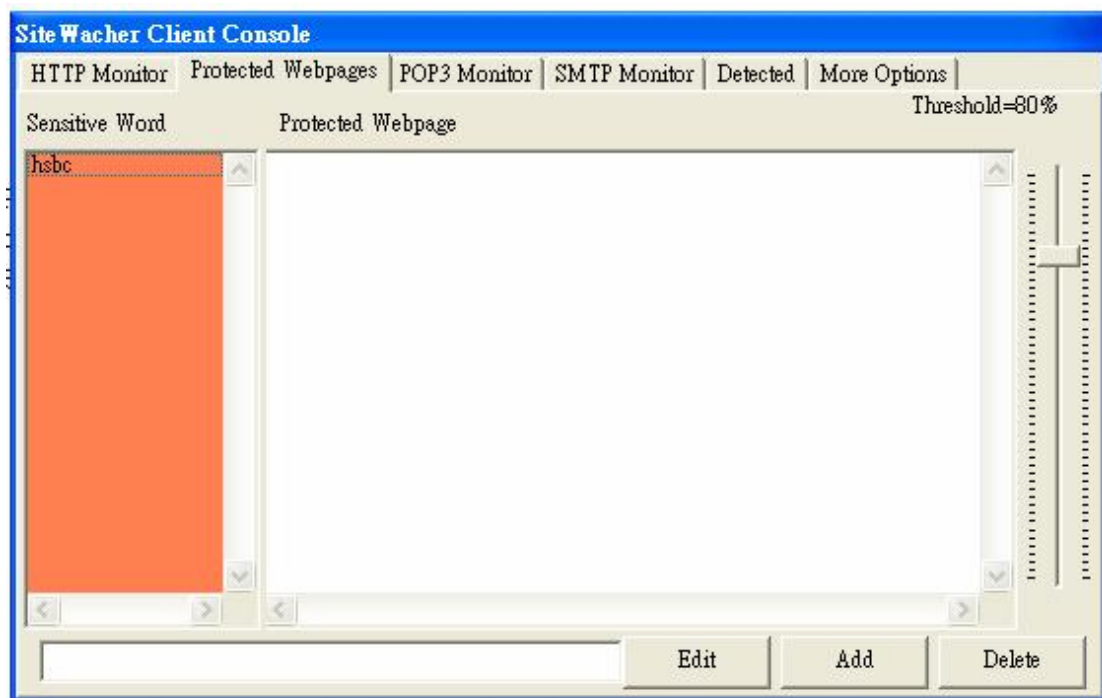
[Anti-Phishing Group](#), Department of Computer Science, City University of Hong Kong

Release Date: 2006-1-25

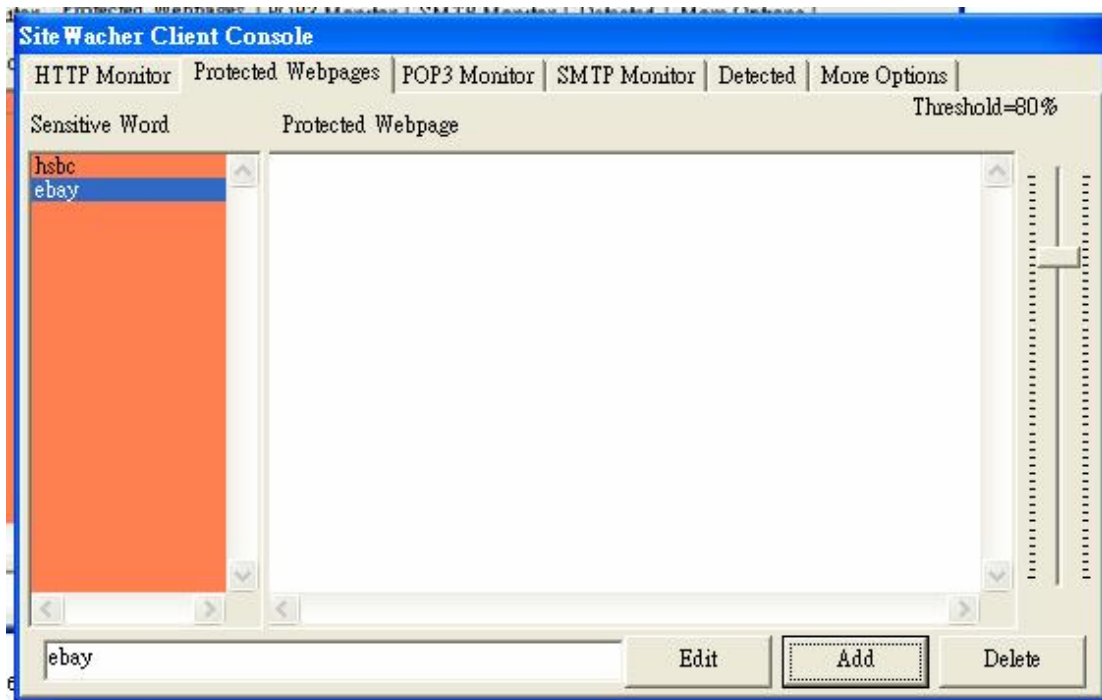
All Rights Reserved

### User Manual

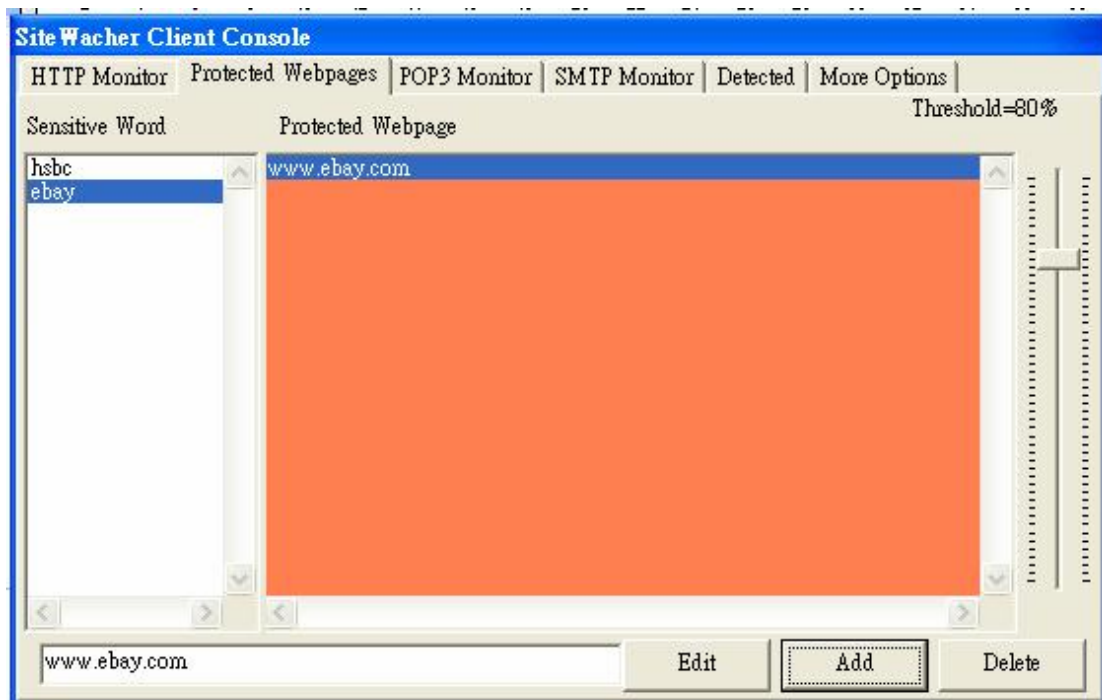
1. Double Click **SiteWacher\_Client.exe** to run SiteWatcher
2. Click “Protected Webpage” to add website that you want to be protected. Note that HSBC has been included as default.
3. Click “Sensitive Word” field so that it changes brown: (Take [www.ebay.com](http://www.ebay.com) as an example)



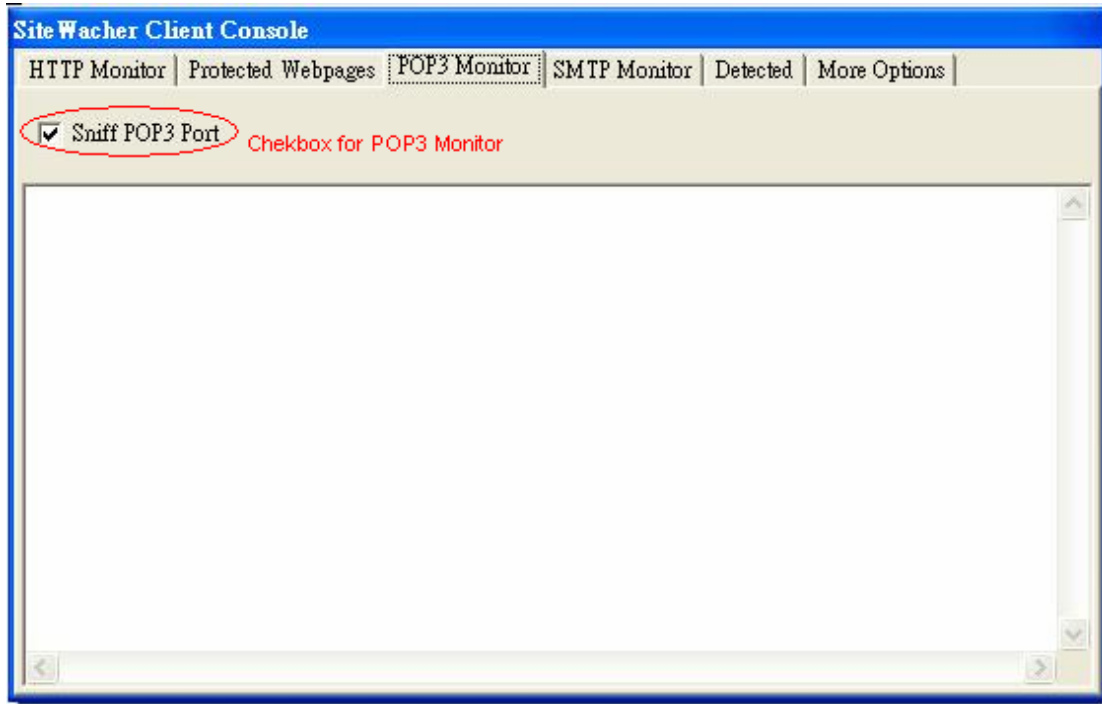
4. Input sensitive word of your webpage to be protected in the textbox, such as **ebay**, then click **Add**. Then the interface looks like this:



5. Choose “ebay” in the Sensitive word field, click the **Protected Webpage** field so that it changes brown.
6. input [www.ebay.com](http://www.ebay.com) in the textfield and click Add. Now the interface looks like this:



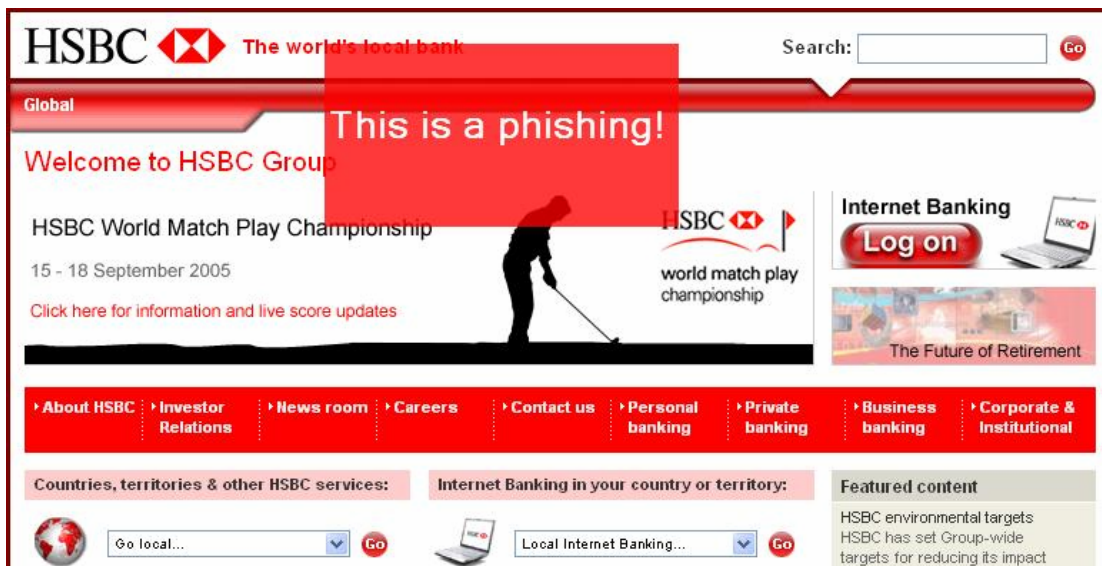
7. you can adjust the threshold for the protected webpage via the scrollbar on the right. But if the threshold is set too low, there may be more false alarms. It’s recommended that you keep the threshold at 80%.
8. there are three monitors: HTTP, POP3 and SMTP, each of which has a checkbox so that you can decide whether to monitor this protocol or not. It’s recommended that you keep all of them checked.



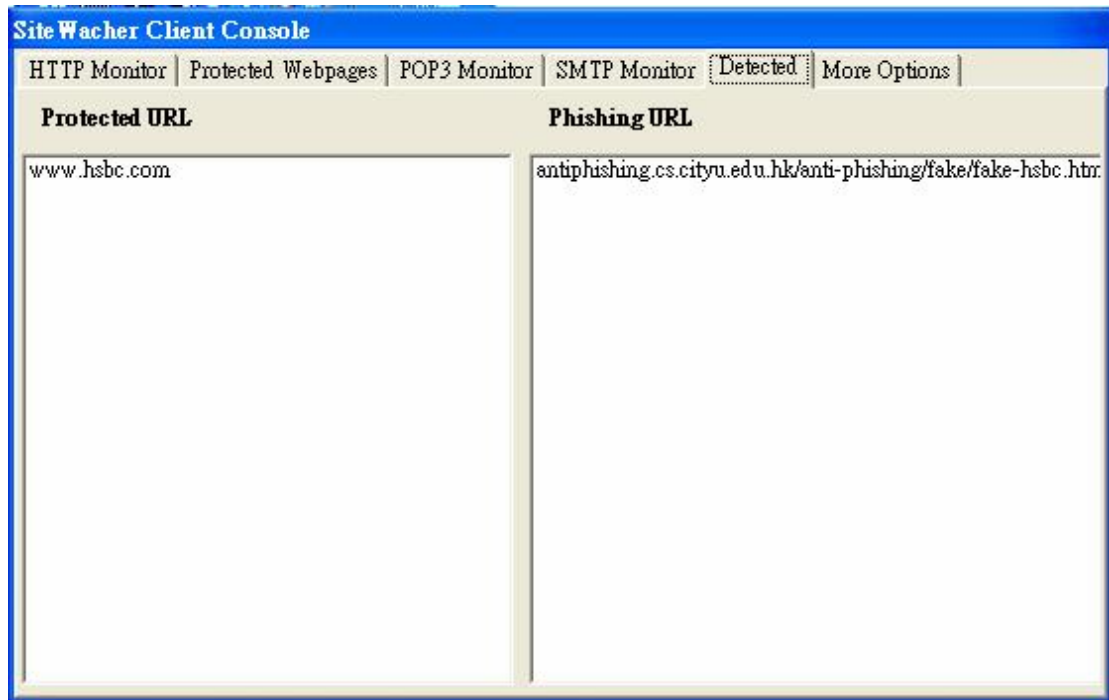
9. Double click the icon in the right-bottom of the screen to show or hide the main window of the program



10. now the sitewatcher is running background. If a phishing is detected, a warning window is shown in the center of the screen:



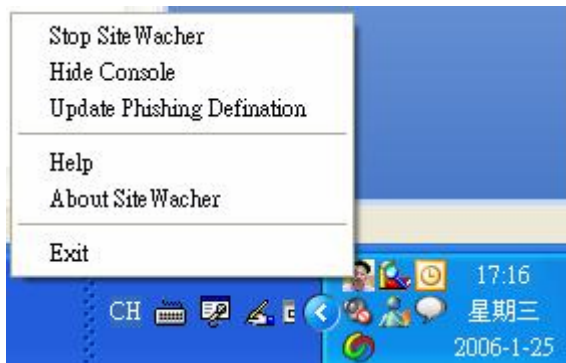
And you'll sound an alarm. Also the phishing address and the real webpage which it is phishing are shown in the **Detected** field of the main window:



11. if you send or receive an email containing phishing url, they'll be detected and reported too.
12. Right click on the icon,



You can see the main menu:



13. click **Stop Site Watcher** to stop monitoring your PC, or click **Exit** to quit.