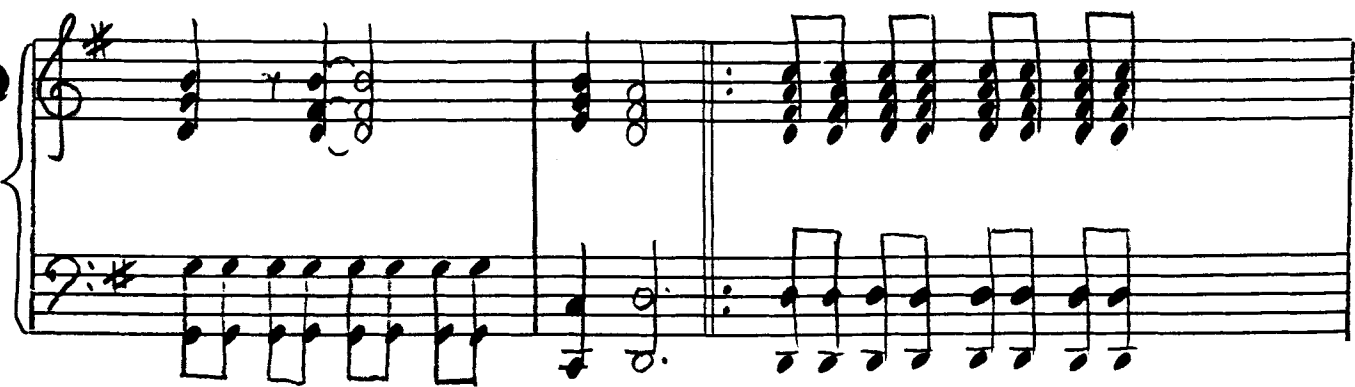
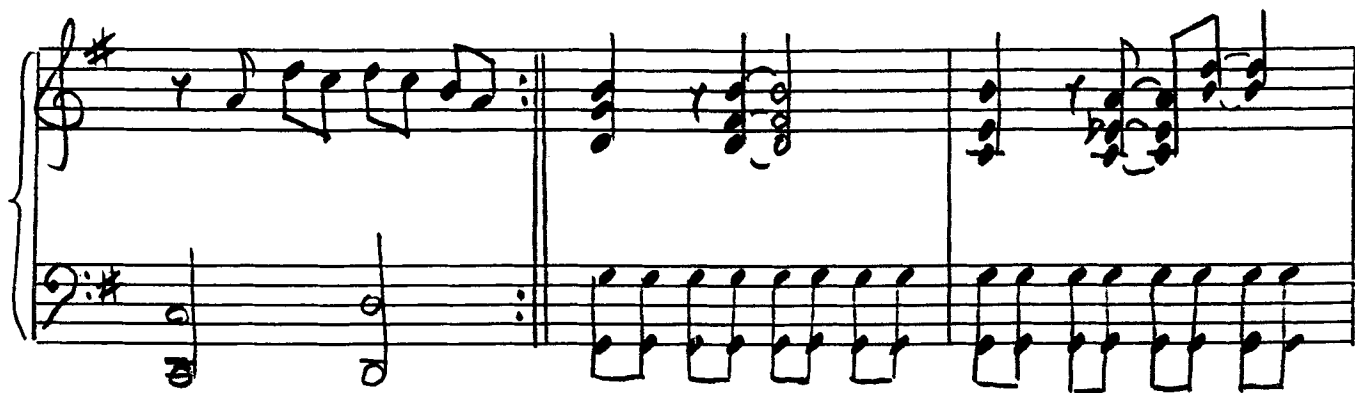
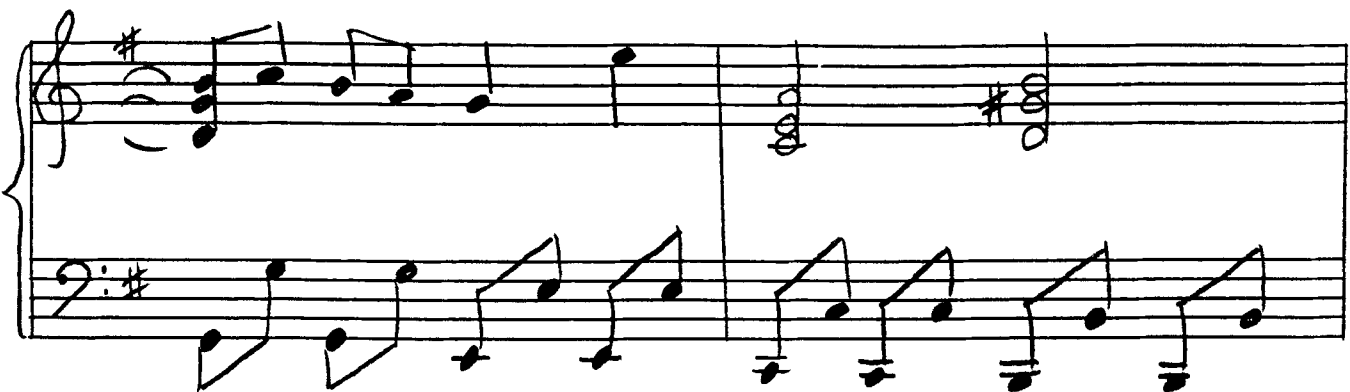
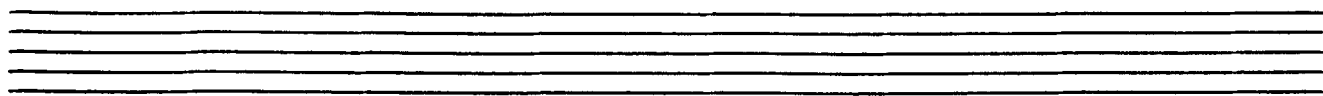


MAC GYVER





Arr. Eirik Bakke/
Jorunn Thorsen 98

The image displays a handwritten musical score for piano, consisting of four systems of staves. Each system includes a treble clef staff and a bass clef staff, both with a key signature of one sharp (F#). The notation is handwritten and includes various musical symbols such as notes, rests, and dynamic markings.

System 1: The treble staff begins with a treble clef and a key signature of one sharp. It contains a series of notes, including a half note, a quarter note, and a half note, followed by a measure with a half note and a quarter note. The bass staff starts with a bass clef and a key signature of one sharp, featuring a series of eighth notes and a half note. A vertical line separates the two measures.

System 2: The treble staff continues with a series of eighth notes and a half note. The bass staff features a series of eighth notes and a half note, with a vertical line separating the two measures.

System 3: The treble staff begins with a treble clef and a key signature of one sharp. It contains a series of notes, including a half note, a quarter note, and a half note, followed by a measure with a half note and a quarter note. The bass staff starts with a bass clef and a key signature of one sharp, featuring a series of eighth notes and a half note. A vertical line separates the two measures.

System 4: The treble staff continues with a series of eighth notes and a half note. The bass staff features a series of eighth notes and a half note, with a vertical line separating the two measures.