

Statistics of Patch Offsets for Image Completion

Supplementary Materials

Kaiming He and Jian Sun
Microsoft Research Asia

All-around Comparisons



input



ours



Content-Aware Fill



Priority-BP



Shift-map



Criminisi et al.'s



input



ours



Content-Aware Fill



Priority-BP



Shift-map



Criminisi et al.'s



input



ours



Content-Aware Fill



Priority-BP



Shift-map



Criminisi et al.'s



input



ours



Content-Aware Fill



Priority-BP



Shift-map



Criminisi et al.'s



input



ours



Content-Aware Fill



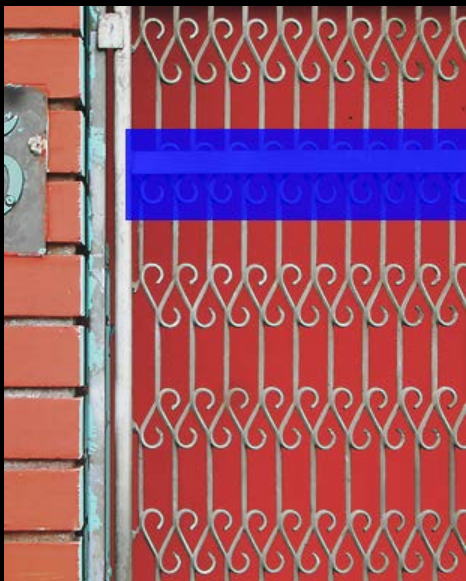
Priority-BP



Shift-map



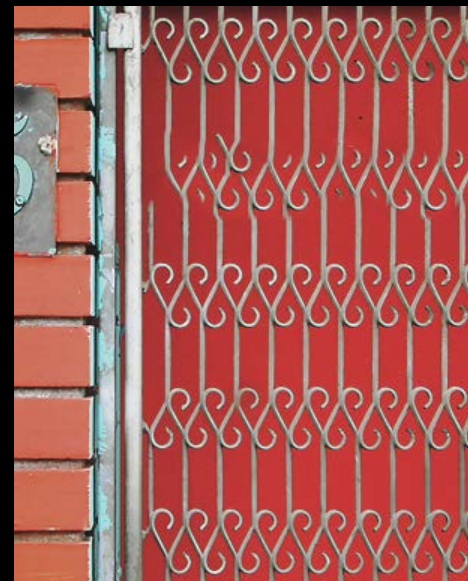
Criminisi et al.'s



input



ours



Content-Aware Fill



Priority-BP



Shift-map



Criminisi et al.'s



input



ours



Content-Aware Fill



Priority-BP



Shift-map



Criminisi et al.'s

Images from previous papers



input

our results

input

our results

Comparisons with PhotoShop (Content-Aware Fill)



Input (860x1150)



ours (0.6s)



Content-Aware Fill (3.1s)



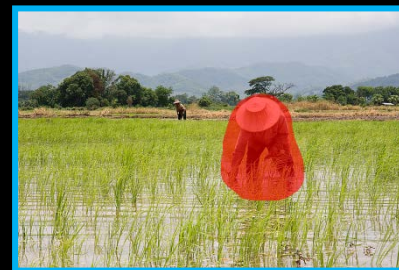
Input (900x1350)



ours (0.5s)



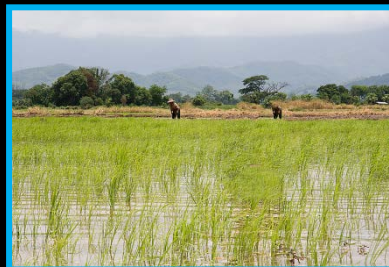
Content-Aware Fill (2.5s)



Input (3900x2600, 10Mp)



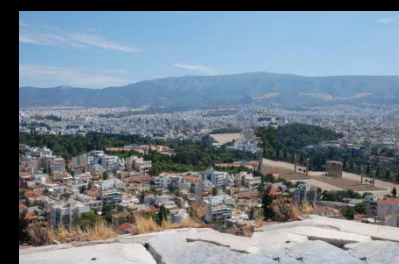
ours (1.5s)



Content-Aware Fill (4.5s)

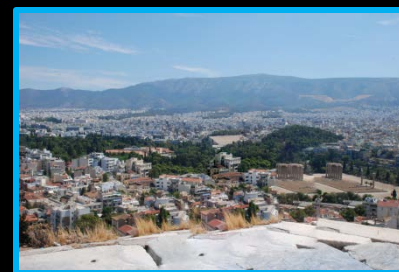


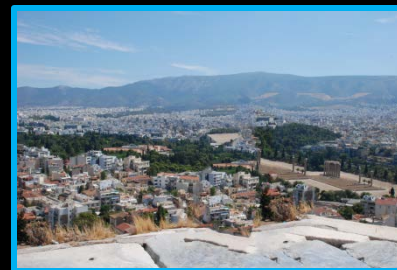
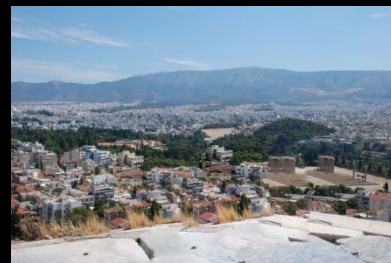
Input (3900x2600, 10Mp)





ours (1.7s)





Content-Aware Fill (9.9s)

Patch Sizes



input



4x4 patch



8x8 patch (default)



16x16 patch



24x24 patch



32x32 patch

More results



Input panorama (3200x2000, 6Mp)



Our result (1.1s)



input

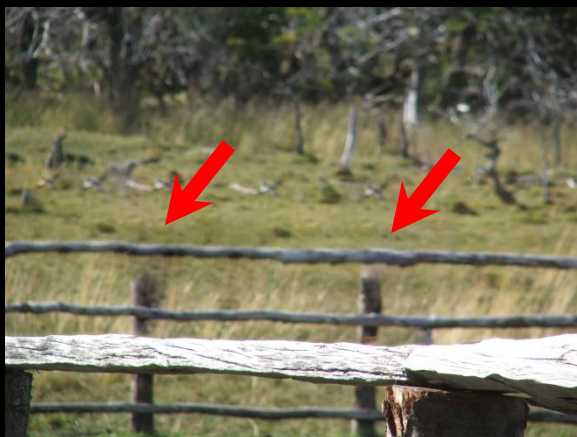
our results



input

our results

Artifacts



input

ours

Content-Aware Fill



input



ours



Content-Aware Fill



input



ours



Content-Aware Fill