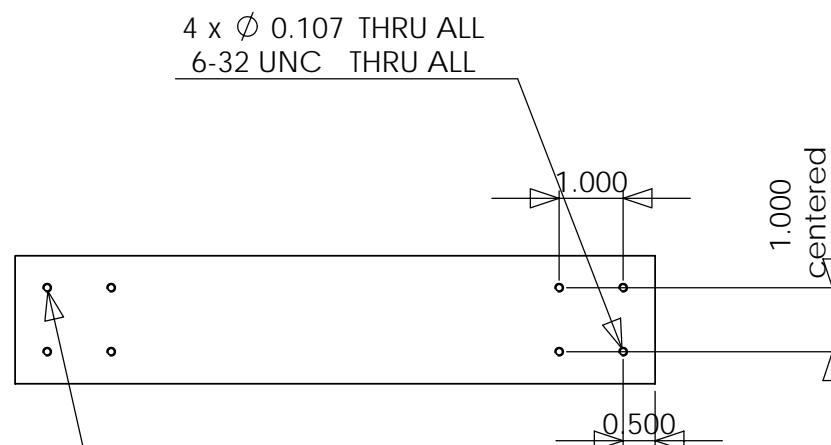
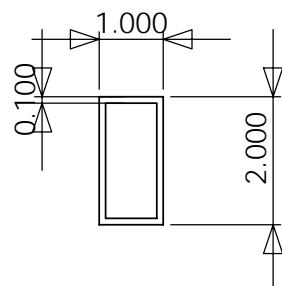
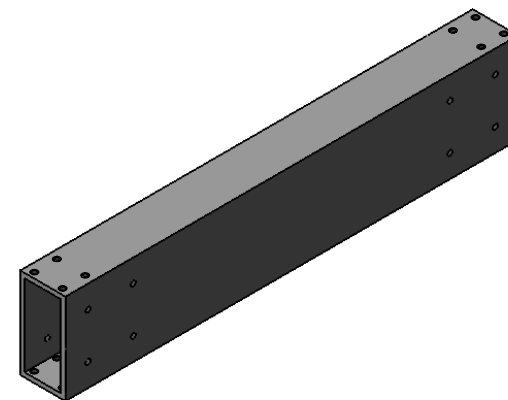
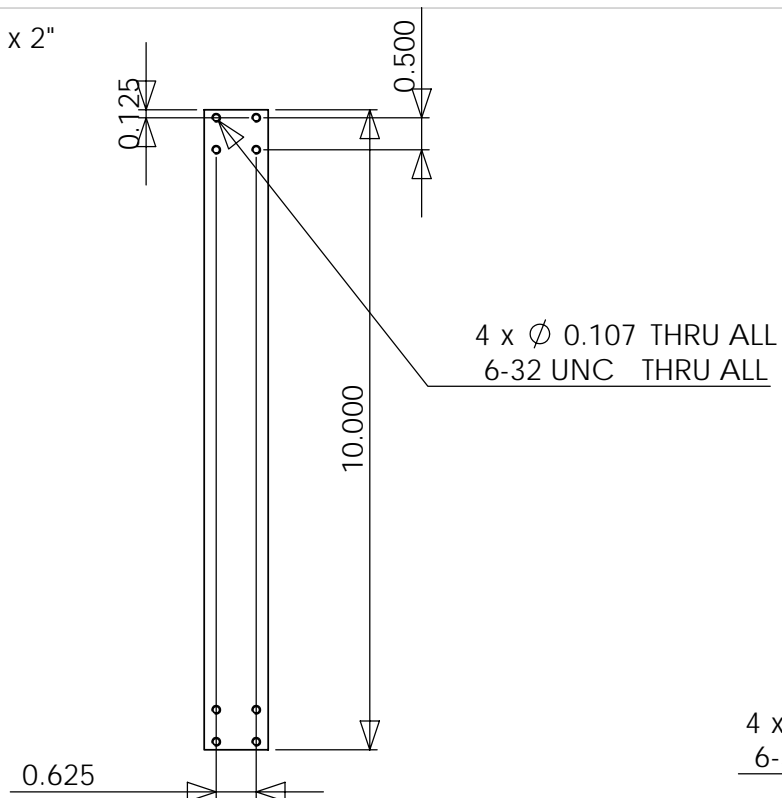


use al extrusion 1" x 2"
al 6061
4 pieces



4/28/2008

MIT CSAIL

77 MASSACHUSETTS AVENUE
RM 32-380
CAMBRIDGE, MA 02139

Drawn by: Dan @ 617-504-9619

a03-al-tube

Quantity: 1 piece

Scale: 1:3

Material:

Finish:

1/1