

Technical drawing of a circular mechanical part, showing a side view and a top view.

Side View Dimensions:

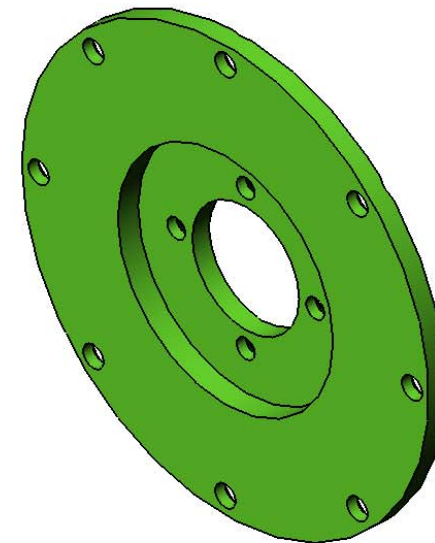
- Total height: $\phi 3.000$
- Central hole diameter: $\phi 0.787$
- Small hole diameter: $\phi 0.125$
- Flange thickness: 0.125
- Internal hole diameter: $\phi 0.150$
- Internal hole depth: 0.400

Top View Dimensions:

- Overall diameter: $\phi 2.750$
- Central hole diameter: $\phi 0.787$
- 8 holes: $8 \times \phi 0.150$ THRU ALL, $\phi 0.279 \times 100^\circ$
- 4 holes: $4 \times \phi 0.134$ THRU ALL, $\phi 0.248 \times 90^\circ$

Other Features:

- Section line A-A is indicated.
- Dimension $\phi 1.024$ is shown for the outer ring.
- Dimension 0.125 is shown for the flange thickness.
- Dimension 0.125 is shown for the small hole diameter.
- Dimension 0.150 is shown for the internal hole diameter.
- Dimension 0.400 is shown for the internal hole depth.



1/1