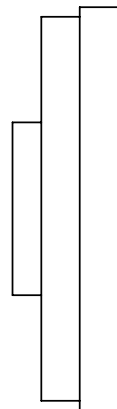
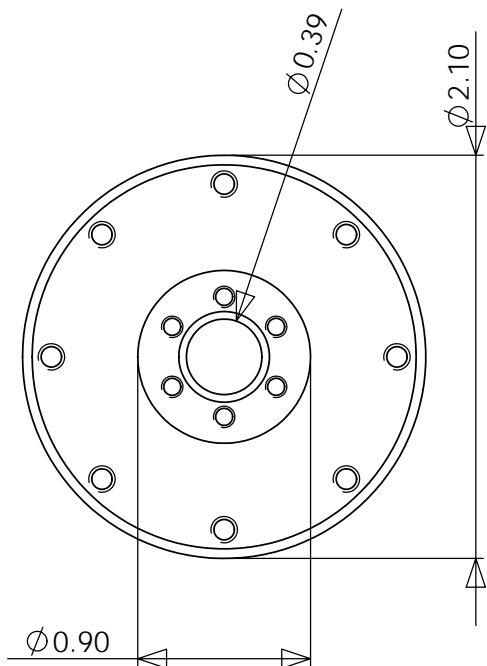


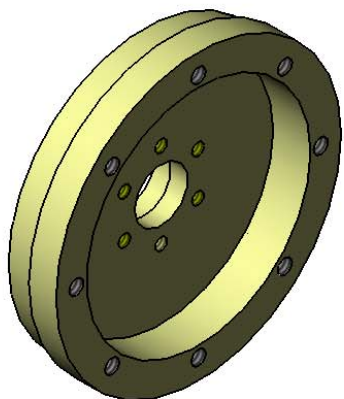
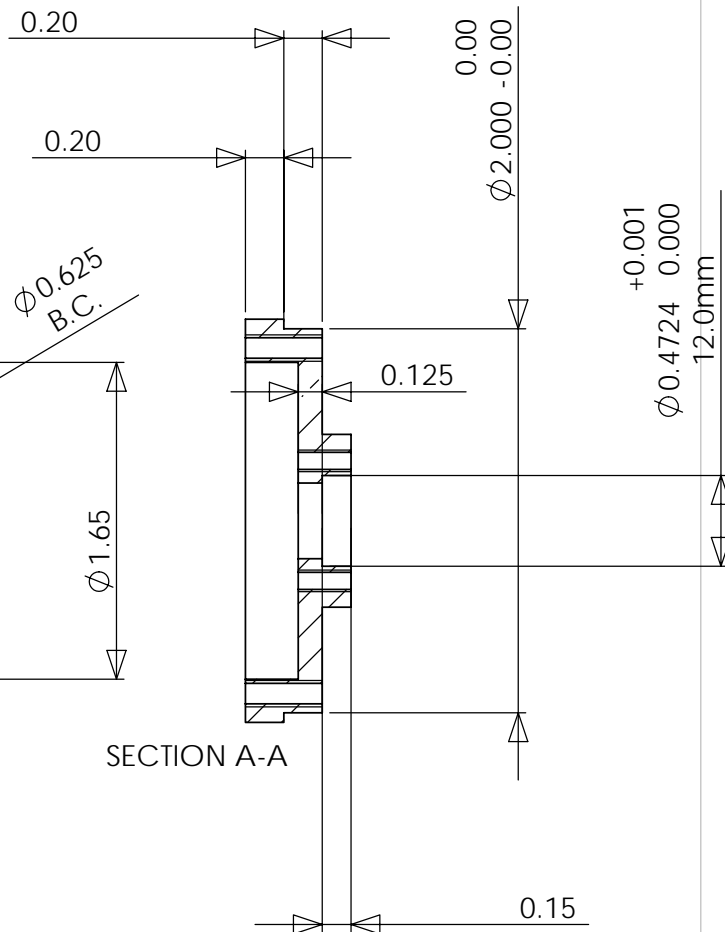
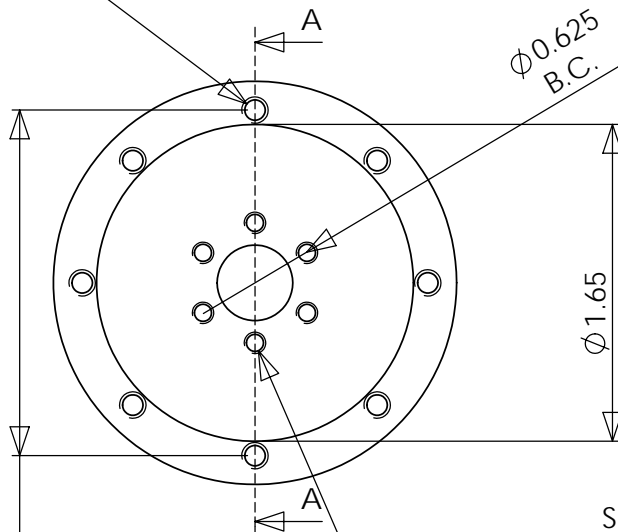
al 6061
4 pieces

8 x \varnothing 0.107 THRU ALL
6-32 UNC THRU ALL



\varnothing 1.800
B.C.

6 x \varnothing 0.089 THRU ALL
4-40 UNC THRU ALL



5/5/2008

MIT CSAIL

77 MASSACHUSETTS AVENUE
RM 32-380
CAMBRIDGE, MA 02139

Drawn by: Dan @ 617-504-9619

a12-inside-bearing-bottom

Scale:1

Material:

Finish:

1/1