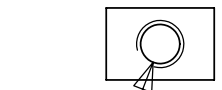
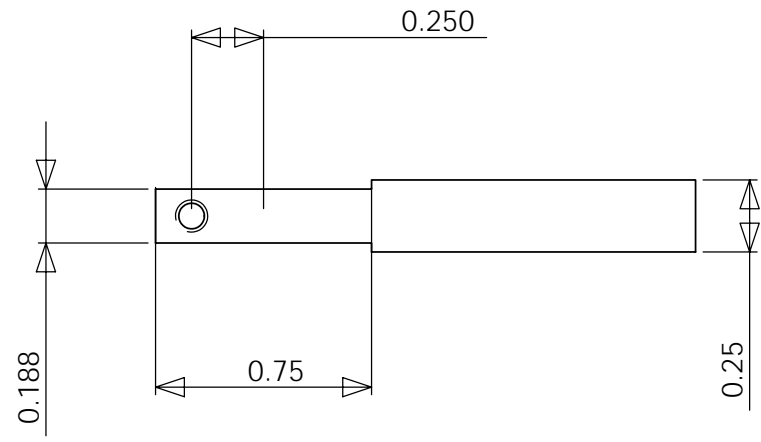
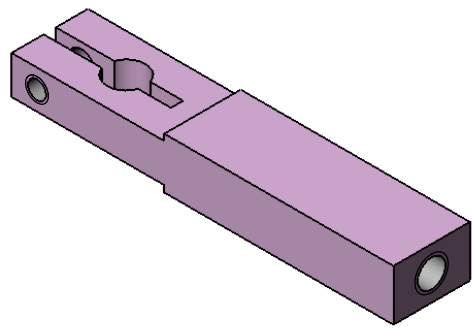
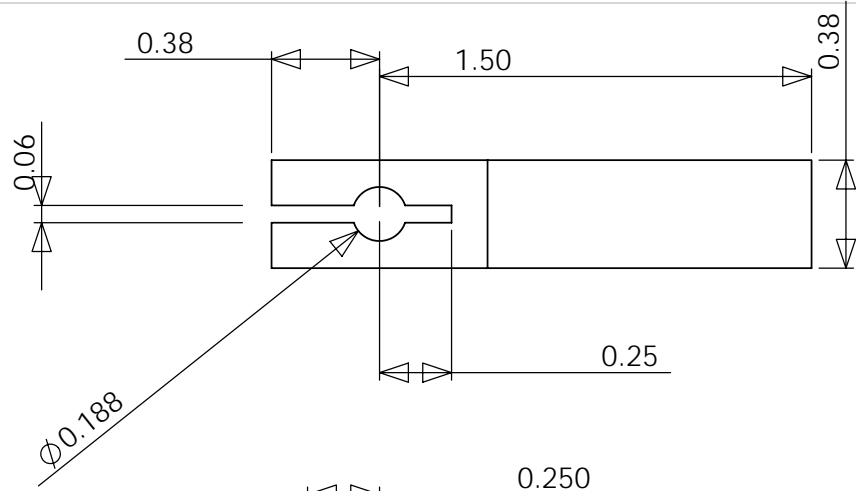
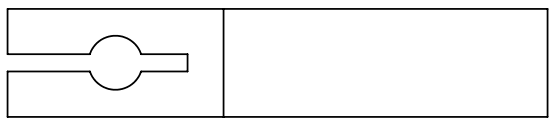


al 6061



clamp hole.
clearance #4 one side $\varnothing 0.125$,
 $\varnothing 0.089$ THRU
4-40 UNC other side



5/26/2008

MIT CSAIL		77 MASSACHUSETTS AVENUE RM 32-380 CAMBRIDGE, MA 02139	
Drawn by: Dan @ 617-504-9619			
a17-spring-shaft-drive			
Quantity: 4 pieces		Scale3:2	
Material:		Finish:	1/1