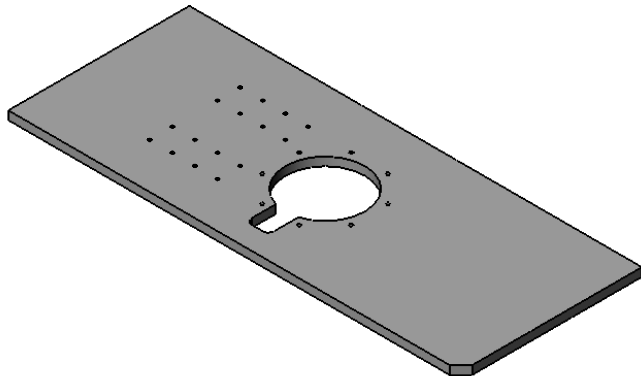
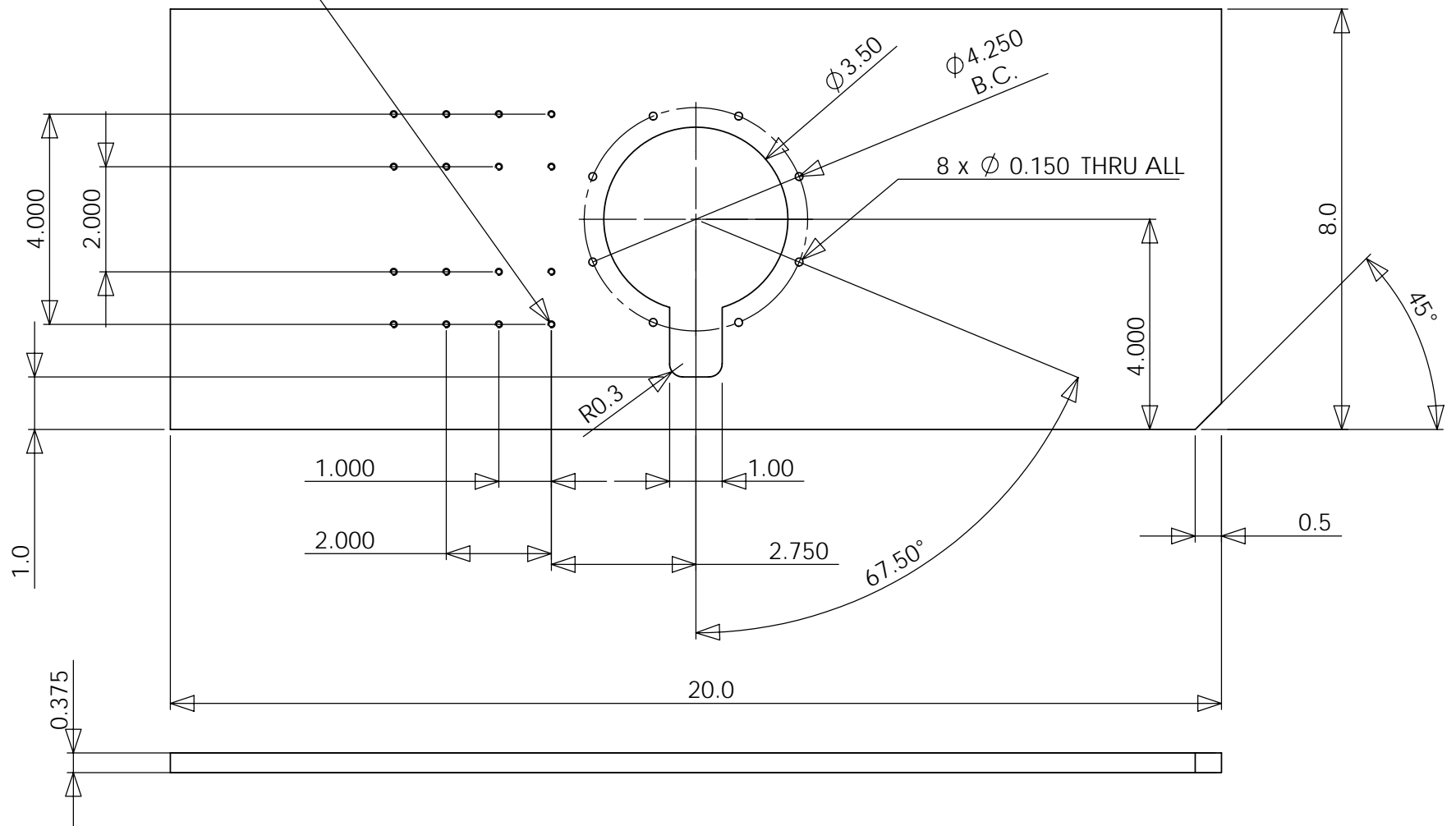


16 x \varnothing 0.100 THRU ALL
6-32 UNC THRU ALL



3/10/2008

MIT CSAIL

77 MASSACHUSETTS AVENUE
RM 32-380
CAMBRIDGE, MA 02139

Drawn by: Dan @ 617-504-9619

b01-baseplate

Quantity: 1 piece

Scale: 1:3

Material:

Finish:

1/1