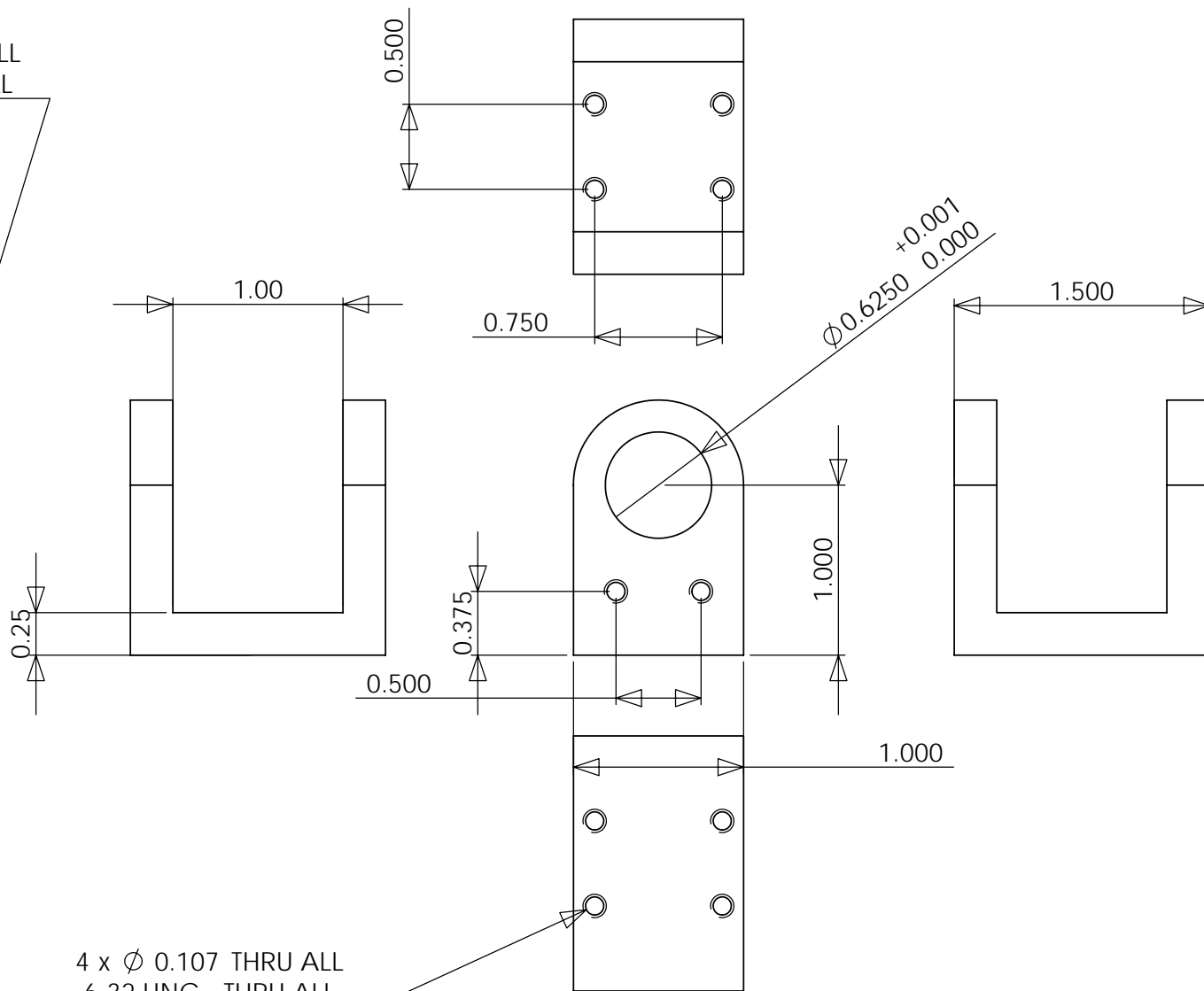
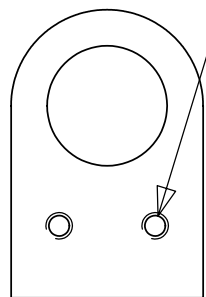
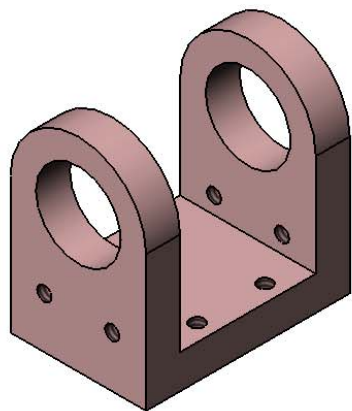


2 x  $\varnothing$  0.107 THRU ALL  
6-32 UNC THRU ALL



4 x  $\varnothing$  0.107 THRU ALL  
6-32 UNC THRU ALL



al 6061

3/19/2008

MIT CSAIL

77 MASSACHUSETTS AVENUE  
RM 32-380  
CAMBRIDGE, MA 02139

Drawn by: Dan @ 617-504-9619

n01-yoke

Quantity: 1 piece

Scale: 1:1

Material:

Finish:

1/1