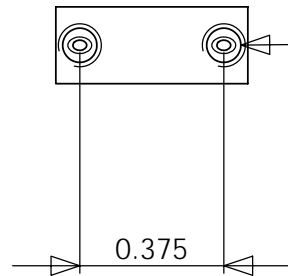
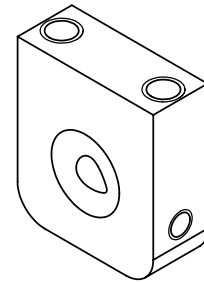


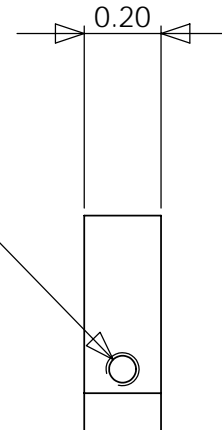
al 6061  
8 pieces



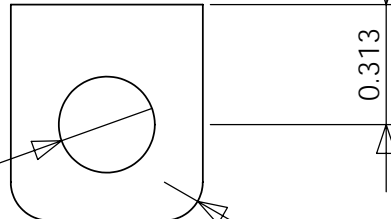
2 x  $\varnothing$  0.089  $\nabla$  0.349  
4-40 UNC  $\nabla$  0.224



$\varnothing$  0.070 THRU ALL  
2-56 UNC THRU ALL



$\varnothing$  0.2500  $\begin{matrix} +0.0005 \\ -0.0005 \end{matrix}$



R0.10

5/12/2008

MIT CSAIL

77 MASSACHUSETTS AVENUE  
RM 32-380  
CAMBRIDGE, MA 02139

Drawn by: Dan @ 617-504-9619

w07-clamp

Quantity: 8 piece

Scale2:1

Material:

Finish:

1/1