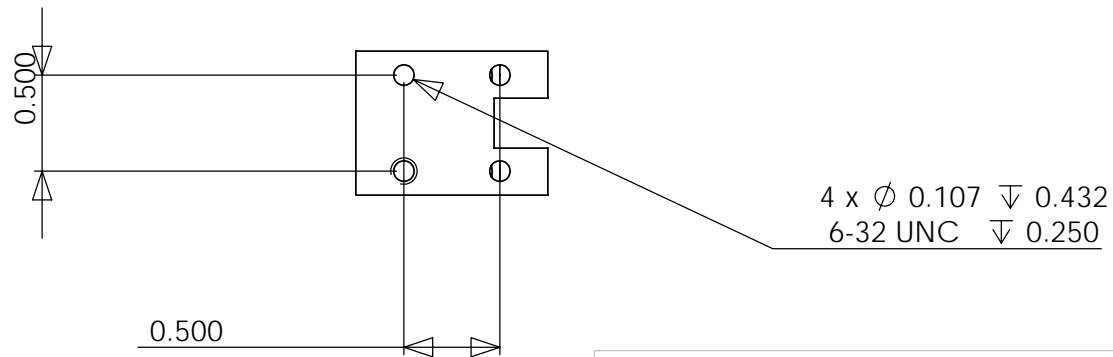
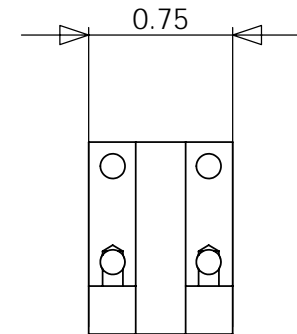
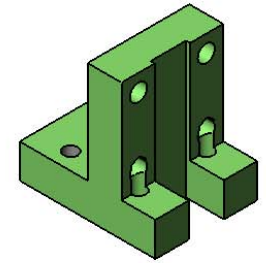
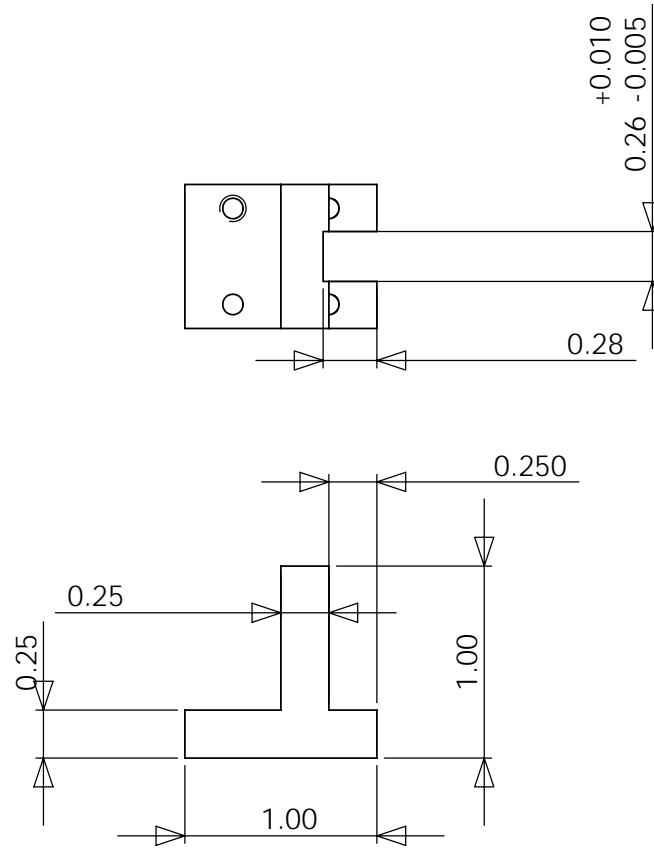
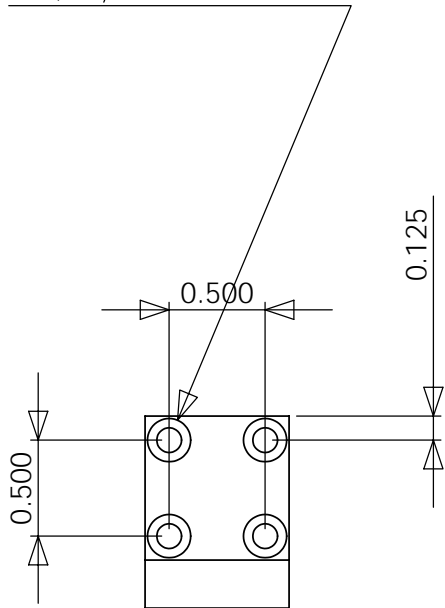


4 x  $\varnothing$  0.129 THRU ALL  
 $\surd$   $\varnothing$  0.225 X 100°

2 pieces  
 al 6061



4 x  $\varnothing$  0.107  $\nabla$  0.432  
 6-32 UNC  $\nabla$  0.250

5/12/2008

MIT CSAIL

77 MASSACHUSETTS AVENUE  
 RM 32-380  
 CAMBRIDGE, MA 02139

Drawn by: Dan @ 617-504-9619

w10-el-2-el

Scale:1:1

Material:

Finish:

1/1