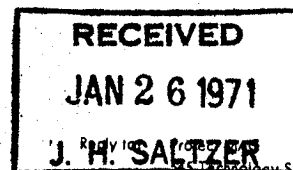


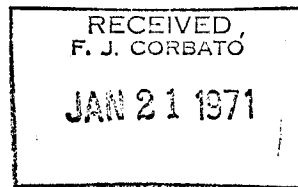
MASSACHUSETTS INSTITUTE OF TECHNOLOGY
PROJECT MAC



January 19, 1971

Cambridge, Mass. 02139

Telephone: (617) 864-6900 x6201



To: Prof. J. C. R. Licklider
Prof. F. J. Corbato ✓
Prof. E. Fredkin
D. E. Burmaster
G. Walker
J. M. Grochow

From: M. M. Jones *MMJ*

Subject: Multics Usage by Project MAC Users

This report summarizes Project MAC's expenditure during 1970 under the agreement with I.P.C. to purchase \$400,000 of Multics service annually for three years.

As can be seen from Figure 1, our usage of Multics went up dramatically during the last 5 months of 1970, averaging \$43,648.55 per month. This rate is well over the average monthly rate of \$400,000/12. Figure 2 shows that by the end of the year, we had spent all but \$37,205 of the \$400,000 commitment. Bob Scott has agreed that we may carry over this under-expenditure to 1971.

It is clear we will have no trouble spending the full \$400,000 plus the \$37,205 during calendar 1971. In fact, instead, we should consider what Multics usage should be cut. I have already begun some selective reduction in the number of people and projects which we supported during 1970. Also, during 1971, some Multics usage will probably be changed to accounts other than main MAC.

This will be the last of the progress reports on our Multics usage. However, I shall always be ready to talk with you at any time about the amount of Multics expenditures.

MMJ:em

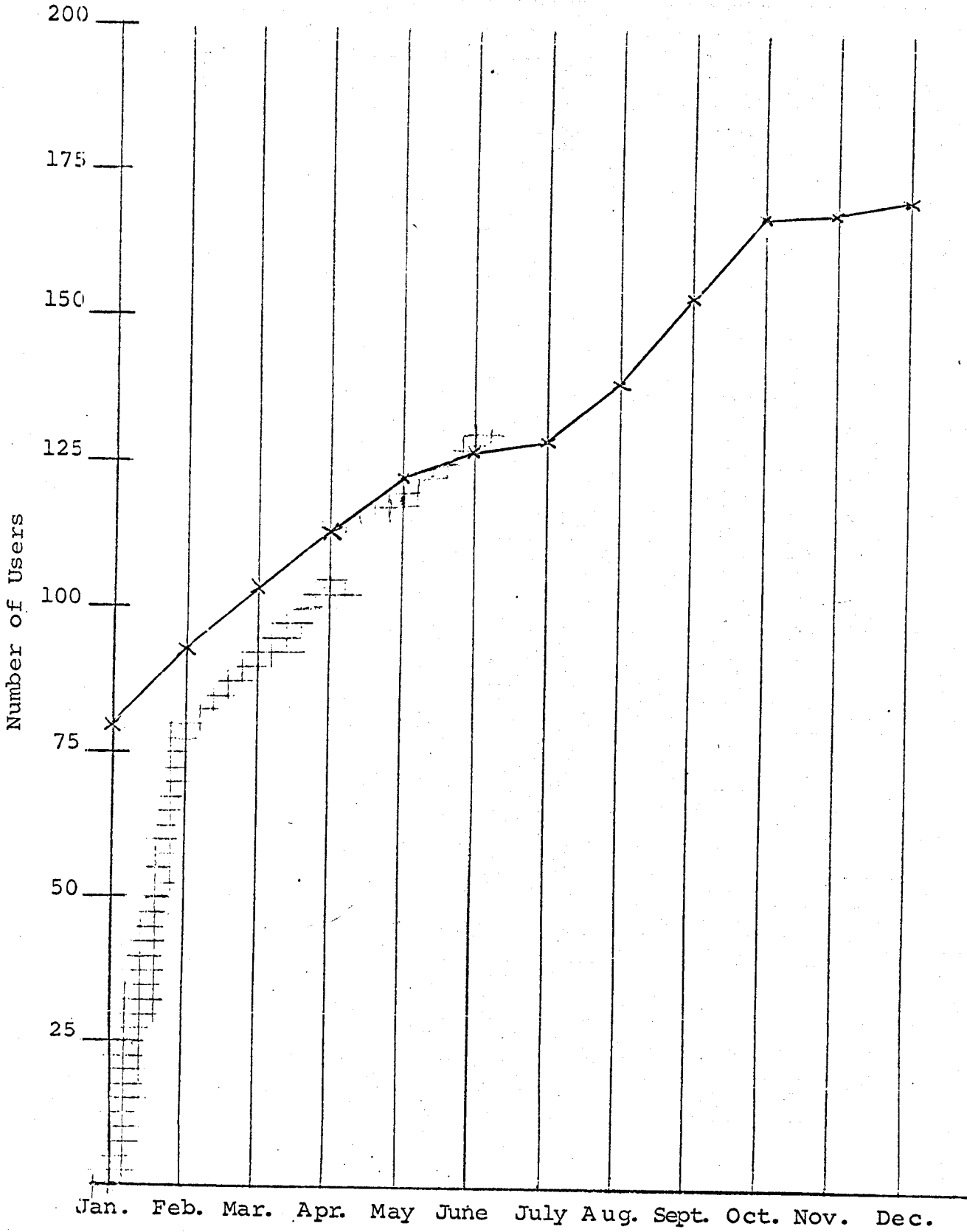


FIGURE 3
Registered MAC Users

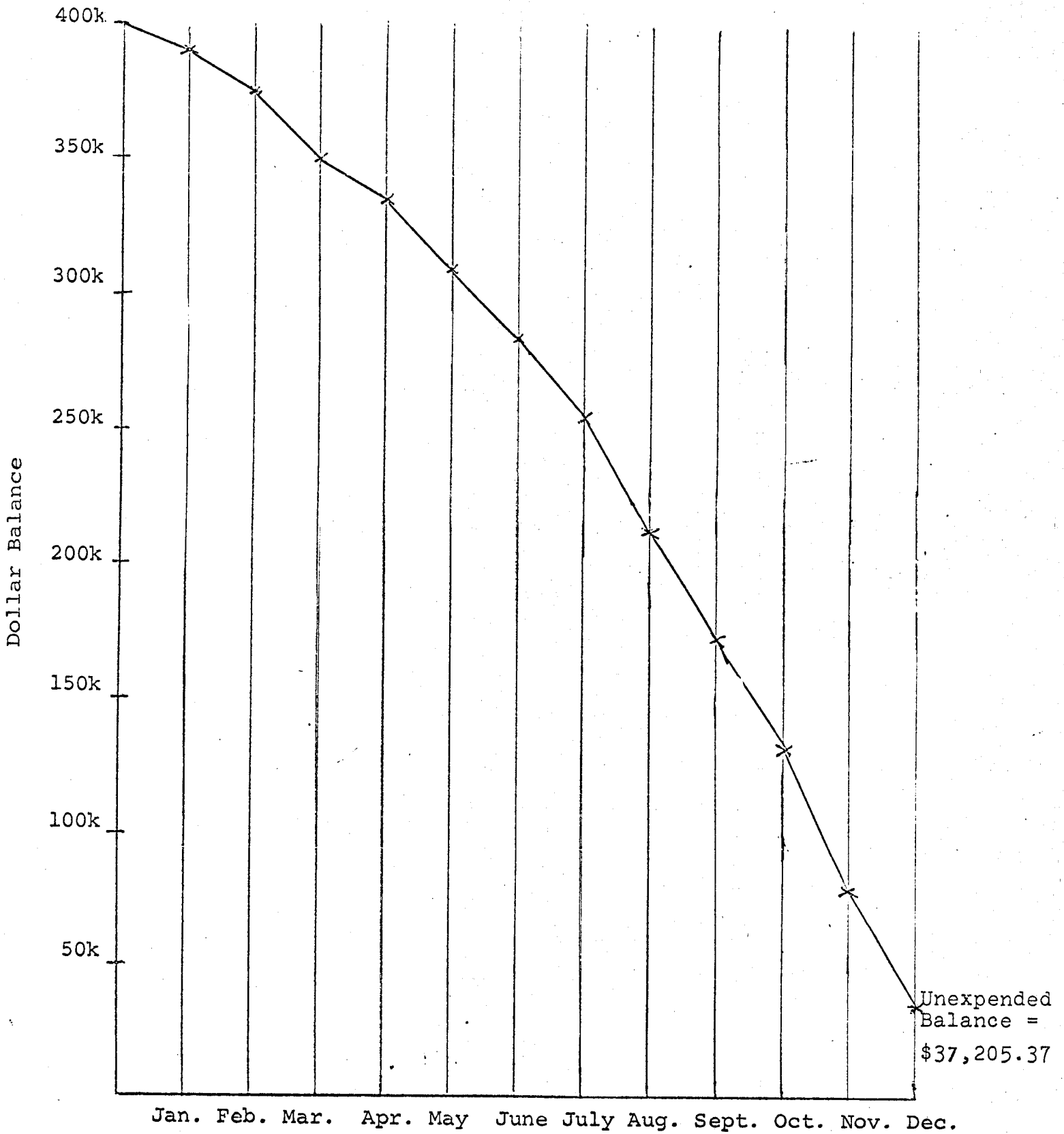


Figure 2

Unexpended Balance

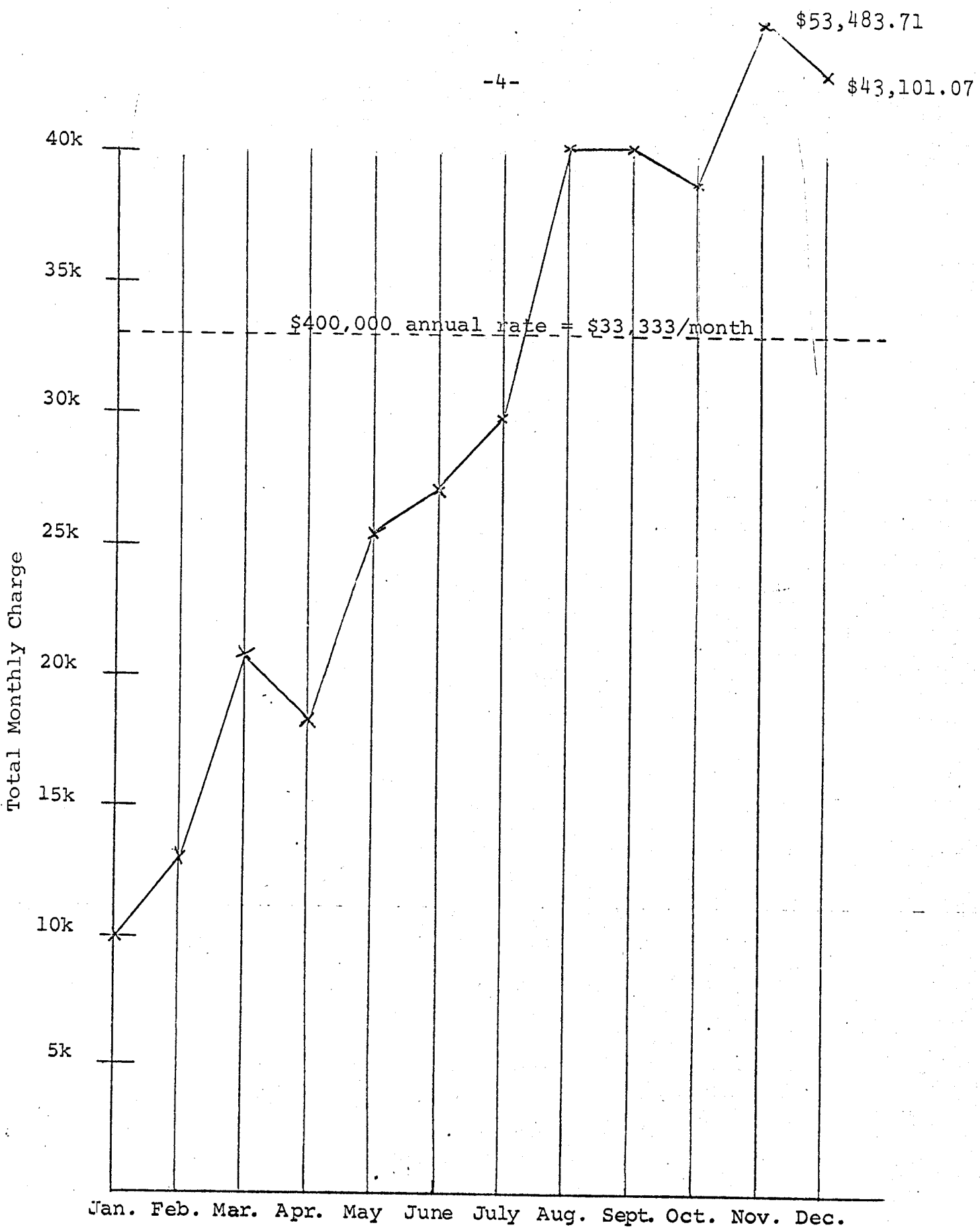


FIGURE 1
Monthly Multics Expenditures

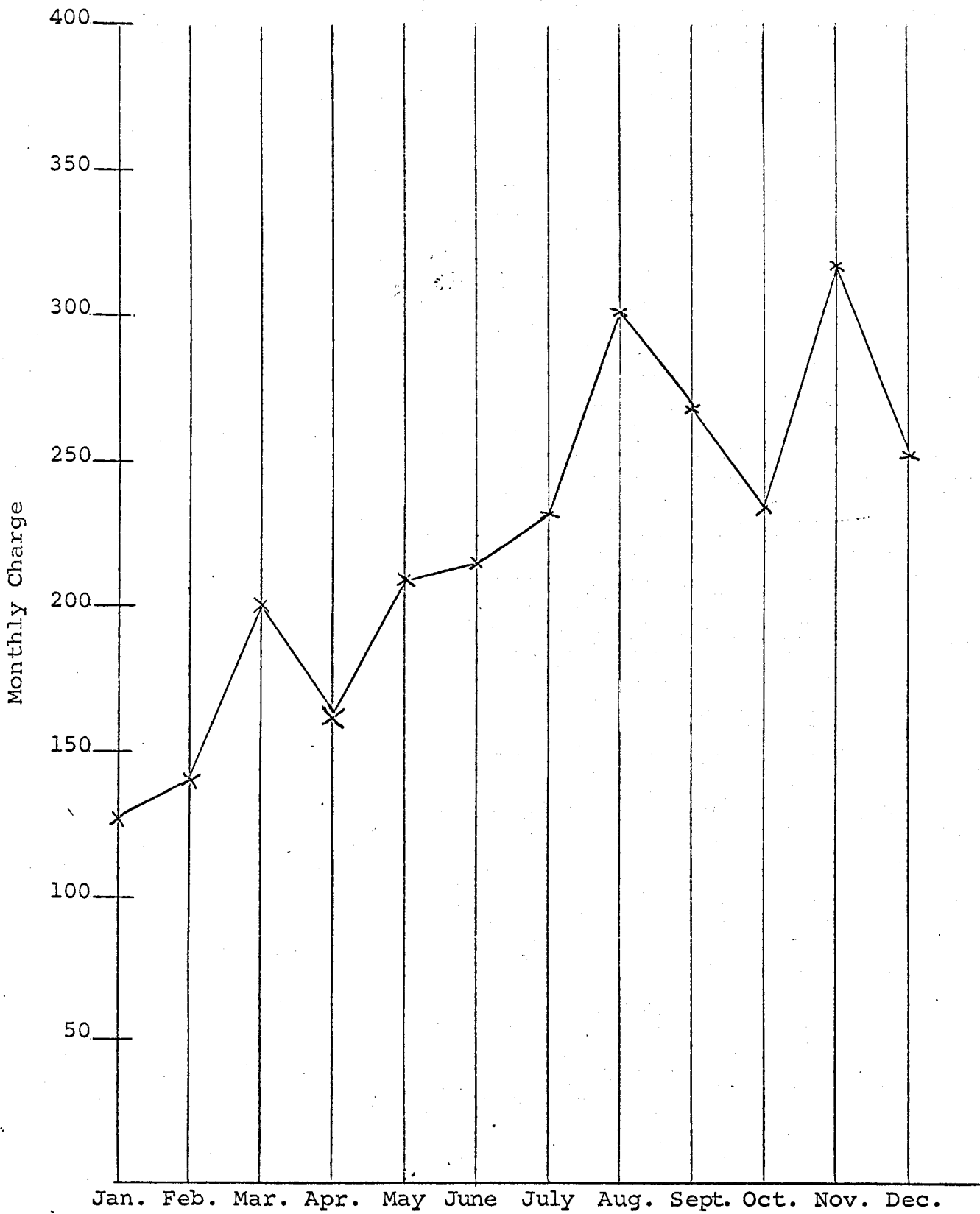


FIGURE 4
Average Monthly Charge Per User

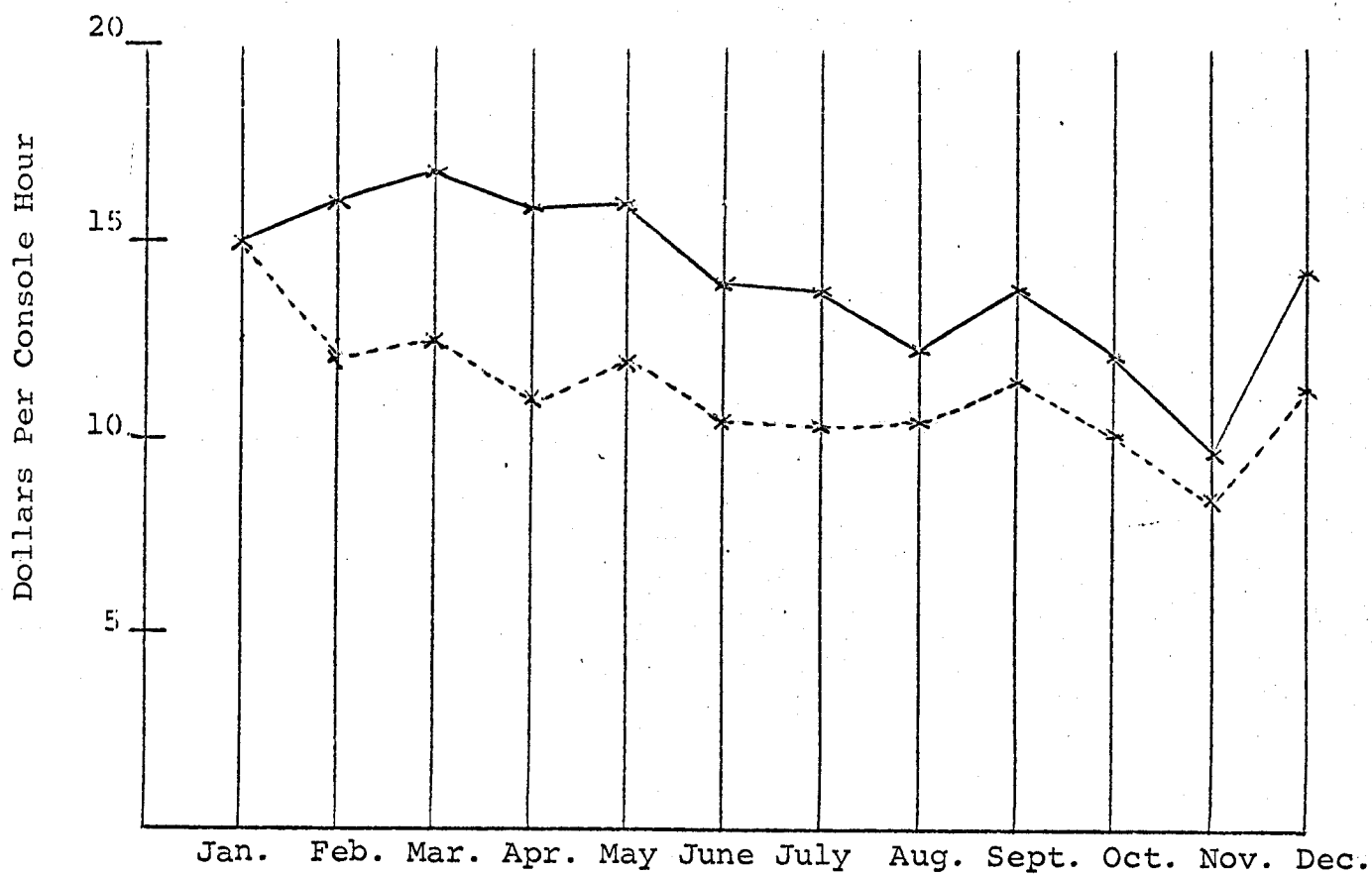


FIGURE 5

Average Charge/Console Hour for Project MAC Users

- Total charge including disk charges
- - - Usage charge excluding disk and registration charges

TABLE 1
REGISTERED MULTICS PROJECTS
SUPPORTED BY MAC

<u>PROJECT NAME</u>	<u>TOTAL THIS YEAR</u>
A.I.	\$ 16,197.88
COMPNET	8,339.16
DATAMAN	319.35
DYNAMOD	5,885.42
GASP	5,520.83
GRAPHICS	1,107.31
LINCOLN	49.34
LISP	401.84
LPS	20,141.74
MAC	20,499.83
MACAIMS	50,005.72
MIS	1,419.31
MPM	13,933.70
MULTIMP	8,629.71
MULTLAB	67,244.14
PROGLING	45,452.47
ROME	7,649.94
SIMPLE	44,148.00
SIPB	27,743.07
SLOAN	2,894.10
6.803	11,066.61
FORMAL SYS	<u>4,145.13</u>
	\$362,794.60